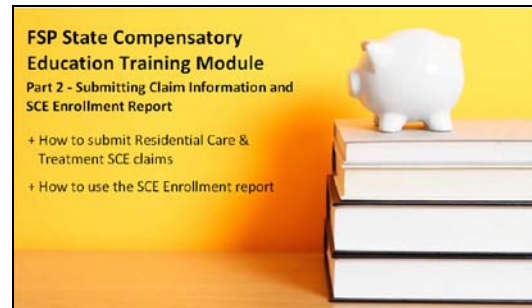


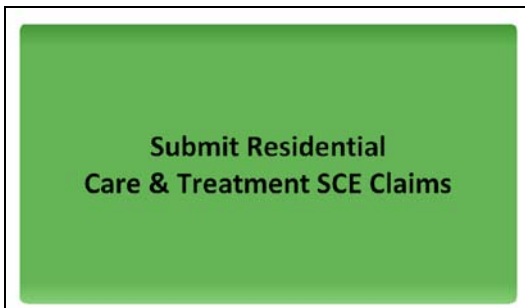
Slide 1

Slide notes:



Slide 2

Slide notes: Welcome to the Submitting Claim information and SCE Enrollment Report part of the FSP State Compensatory Education training module. In this part, you will learn... How to submit Residential Care & Treatment SCE claims...and How to use the SCE Enrollment report.



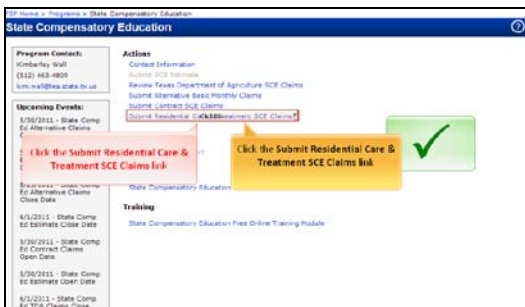
Slide 3

Slide notes:



Slide 4

Slide notes: School Districts and Open enrollment Charter Schools that did not participate in the National School Lunch Program or School Breakfast Program through the TDA TXUNPS, and did not submit these students on the Basic Monthly Claims for Alternative SCE reporting to the Division of State Funding, can report the SCE students through the Residential Care & Treatment program.



Slide 5

Slide notes: From the SCE main page, select the \*\*Submit Residential Care & Treatment SCE Claims\*\* link.



Slide 6

Slide notes:

Residential Care & Treatment SCE Claims Detail

All questions must be completed.

Status: New      Last Updated:      Last Updated By:

Please answer the following questions:

a) Did not participate in the National School Lunch Program or School Breakfast Program through the Texas Department of Agriculture (TDAMS) AND did not submit these students on the Basic Minority Claims for Alternative State Compensatory Education reporting to the Division of State Funding.  Yes  No

b) Participated in the National School Lunch Program or School Breakfast Program through a contract with the Texas Department of Agriculture Commission (THASC) Texas Department of Aging and Disability Services (TDSAS)  Yes  No

c) Participated in the National School Lunch Program or School Breakfast Program through a contract with a Texas School District AND the charter school did not file claims for reimbursement through THASC AND the school district did not include the charter's Free and Reduced Application counts in the school district's reimbursement claims on THASC. (Must be stated or corrected)  Yes  No

d) Served Non-Special Education Students in a Residential Treatment Facility in a School District where the parents or legal guardian of the Student (X) do not reside.  Yes  No

Slide 7

Slide notes: The Residential Care & Treatment SCE Claims Detail page will open, showing four questions. Your eligibility to submit these claims depends on your answers to these questions.

Residential Care & Treatment SCE Claims Detail

All questions must be completed.

Status: New      Last Updated:      Last Updated By:

Please answer the following questions:

a) Did not participate in the National School Lunch Program or School Breakfast Program through the Texas Department of Agriculture (TDAMS) AND did not submit these students on the Basic Minority Claims for Alternative State Compensatory Education reporting to the Division of State Funding.  Yes  No

b) Participated in the National School Lunch Program or School Breakfast Program through a contract with the Texas Department of Agriculture Commission (THASC) Texas Department of Aging and Disability Services (TDSAS)  Yes  No

c) Participated in the National School Lunch Program or School Breakfast Program through a contract with a Texas School District AND the charter school did not file claims for reimbursement through THASC AND the school district did not include the charter's Free and Reduced Application counts in the school district's reimbursement claims on THASC. (Must be stated or corrected)  Yes  No

d) Served Non-Special Education Students in a Residential Treatment Facility in a School District where the parents or legal guardian of the Student (X) do not reside.  Yes  No

Slide 8

Slide notes: Answer the questions as accurately as possible.

Residential Care & Treatment SCE Claims Detail

All questions must be completed.

Status: New      Last Updated:      Last Updated By:

Please answer the following questions:

a) Did not participate in the National School Lunch Program or School Breakfast Program through the Texas Department of Agriculture (TDAMS) AND did not submit these students on the Basic Minority Claims for Alternative State Compensatory Education reporting to the Division of State Funding.  Yes  No

b) Participated in the National School Lunch Program or School Breakfast Program through a contract with the Texas Department of Agriculture Commission (THASC) Texas Department of Aging and Disability Services (TDSAS)  Yes  No

c) Participated in the National School Lunch Program or School Breakfast Program through a contract with a Texas School District AND the charter school did not file claims for reimbursement through THASC AND the school district did not include the charter's Free and Reduced Application counts in the school district's reimbursement claims on THASC. (Must be stated or corrected)  Yes  No

d) Served Non-Special Education Students in a Residential Treatment Facility in a School District where the parents or legal guardian of the Student (X) do not reside.  Yes  No

Slide 9

Slide notes:

Residential Care & Treatment SCE Claims Detail

All questions must be completed.

Status: New      Last Updated:      Last Updated By:

Please answer the following questions:

a) Did not participate in the National School Lunch Program or School Breakfast Program through the Texas Department of Agriculture (TDAMS) AND did not submit these students on the Basic Minority Claims for Alternative State Compensatory Education reporting to the Division of State Funding.  Yes  No

b) Participated in the National School Lunch Program or School Breakfast Program through a contract with the Texas Department of Agriculture Commission (THASC) Texas Department of Aging and Disability Services (TDSAS)  Yes  No

c) Participated in the National School Lunch Program or School Breakfast Program through a contract with a Texas School District AND the charter school did not file claims for reimbursement through THASC AND the school district did not include the charter's Free and Reduced Application counts in the school district's reimbursement claims on THASC. (Must be stated or corrected)  Yes  No

d) Served Non-Special Education Students in a Residential Treatment Facility in a School District where the parents or legal guardian of the Student (X) do not reside.  Yes  No

Slide 10

Slide notes:

Residential Care & Treatment SCE Claims Detail

All questions must be completed.

Status: New      Last Updated:      Last Updated By:

Please answer the following questions:

a) Did not participate in the National School Lunch Program or School Breakfast Program through the Texas Department of Agriculture (TDAMS) AND did not submit these students on the Basic Minority Claims for Alternative State Compensatory Education reporting to the Division of State Funding.  Yes  No

b) Participated in the National School Lunch Program or School Breakfast Program through a contract with the Texas Department of Agriculture Commission (THASC) Texas Department of Aging and Disability Services (TDSAS)  Yes  No

c) Participated in the National School Lunch Program or School Breakfast Program through a contract with a Texas School District AND the charter school did not file claims for reimbursement through THASC AND the school district did not include the charter's Free and Reduced Application counts in the school district's reimbursement claims on THASC. (Must be stated or corrected)  Yes  No

d) Served Non-Special Education Students in a Residential Treatment Facility in a School District where the parents or legal guardian of the Student (X) do not reside.  Yes  No

Slide 11

Slide notes:

Residential Care & Treatment SCE Claims Detail

All questions must be completed.

Status: New      Last Updated:      Last Updated By:

Please answer the following questions:

a) Did not participate in the National School Lunch Program or School Breakfast Program through the Texas Department of Agriculture (TDAMS) AND did not submit these students on the Basic Minority Claims for Alternative State Compensatory Education reporting to the Division of State Funding.  Yes  No

b) Participated in the National School Lunch Program or School Breakfast Program through a contract with the Texas Department of Agriculture Commission (THASC) Texas Department of Aging and Disability Services (TDSAS)  Yes  No

c) Participated in the National School Lunch Program or School Breakfast Program through a contract with a Texas School District AND the charter school did not file claims for reimbursement through THASC AND the school district did not include the charter's Free and Reduced Application counts in the school district's reimbursement claims on THASC. (Must be stated or corrected)  Yes  No

d) Served Non-Special Education Students in a Residential Treatment Facility in a School District where the parents or legal guardian of the Student (X) do not reside.  Yes  No

Slide 12

Slide notes:

**Residential Care & Treatment SCE Claims Detail**

Status: New Last Updated: Last Updated By:

Please answer the following questions:

a) Did not participate in the National School Lunch Program or School Breakfast Program through the Texas Department of Agriculture TXNAPS AND did not submit these students on the Basic Priority Claims for Alternative State Compensatory Education reporting to the Division of State Funding.  Yes  No

b) Participated in the National School Lunch Program or School Breakfast Program through a contract with the Texas Department of Agriculture Commission (THSCC) Texas Department of Aging and Disability Services (TDAADS)  Yes  No

c) Participated in the National School Lunch Program or School Breakfast Program through a contract with a Texas School District AND the charter school did not file the claims for reimbursement through TXNAPS AND the school district did not include the charter's Free and Reduced Application counts in the school district's reimbursement claims on TXNAPS. (Must be stated in contract)  Yes  No

d) Served Non-Special Education Students in a Residential Treatment Facility in a School District where the parents or legal guardian of the Student (S) do not reside.  Yes  No

Slide 13  
Slide notes:

**Residential Care & Treatment SCE Claims Detail**

Status: New Last Updated: Last Updated By:

Please answer the following questions:

a) Did not participate in the National School Lunch Program or School Breakfast Program through the Texas Department of Agriculture TXNAPS AND did not submit these students on the Basic Priority Claims for Alternative State Compensatory Education reporting to the Division of State Funding.  Yes  No

b) Participated in the National School Lunch Program or School Breakfast Program through a contract with the Texas Department of Agriculture Commission (THSCC) Texas Department of Aging and Disability Services (TDAADS)  Yes  No

c) Participated in the National School Lunch Program or School Breakfast Program through a contract with a Texas School District AND the charter school did not file the claims for reimbursement through TXNAPS AND the school district did not include the charter's Free and Reduced Application counts in the school district's reimbursement claims on TXNAPS. (Must be stated in contract)  Yes  No

d) Served Non-Special Education Students in a Residential Treatment Facility in a School District where the parents or legal guardian of the Student (S) do not reside.  Yes  No

Slide 14  
Slide notes:

**Residential Care & Treatment SCE Claims Detail**

Status: New Last Updated: Last Updated By:

Please answer the following questions:

a) Did not participate in the National School Lunch Program or School Breakfast Program through the Texas Department of Agriculture TXNAPS AND did not submit these students on the Basic Priority Claims for Alternative State Compensatory Education reporting to the Division of State Funding.  Yes  No

b) Participated in the National School Lunch Program or School Breakfast Program through a contract with the Texas Department of Agriculture Commission (THSCC) Texas Department of Aging and Disability Services (TDAADS)  Yes  No

c) Participated in the National School Lunch Program or School Breakfast Program through a contract with a Texas School District AND the charter school did not file the claims for reimbursement through TXNAPS AND the school district did not include the charter's Free and Reduced Application counts in the school district's reimbursement claims on TXNAPS. (Must be stated in contract)  Yes  No

d) Served Non-Special Education Students in a Residential Treatment Facility in a School District where the parents or legal guardian of the Student (S) do not reside.  Yes  No

Slide 15  
Slide notes: If the answers to your questions prove you eligible to submit Residential Care & Treatment Claims, a blank table will appear for you to enter your data.

**Practice Question #1**

Correct - Click anywhere or press Y to continue

**True/False**

All districts and Charters are eligible to submit RC&T claims.

A) True

B) False

Incorrect - Click anywhere or press Y to continue

Question 1 of 4

Clear Back Skip Submit

Slide 16  
Slide notes: All districts and Charters are eligible to submit RC&T claims.

**Residential Care & Treatment SCE Claims Detail**

Status: New Last Updated: Last Updated By:

Please answer the following questions:

**FALSE**

If the answers to your questions prove you eligible to submit Residential Care & Treatment Claims, a blank table will appear for you to enter your data.

a) Did not participate in the National School Lunch Program or School Breakfast Program through the Texas Department of Agriculture TXNAPS AND did not submit these students on the Basic Priority Claims for Alternative State Compensatory Education reporting to the Division of State Funding.  Yes  No

b) Participated in the National School Lunch Program or School Breakfast Program through a contract with the Texas Department of Agriculture Commission (THSCC) Texas Department of Aging and Disability Services (TDAADS)  Yes  No

c) Participated in the National School Lunch Program or School Breakfast Program through a contract with a Texas School District AND the charter school did not file the claims for reimbursement through TXNAPS AND the school district did not include the charter's Free and Reduced Application counts in the school district's reimbursement claims on TXNAPS. (Must be stated in contract)  Yes  No

d) Served Non-Special Education Students in a Residential Treatment Facility in a School District where the parents or legal guardian of the Student (S) do not reside.  Yes  No

Slide 17  
Slide notes: False! If the answers to your questions prove you eligible to submit Residential Care & Treatment Claims, a blank table will appear for you to enter your data.

Upload RC&T SCE Claims

Claim Date	RC&T SCE Claims	Material Change
11/2009		
11/2009		
11/2009		
1/2010		
2/2010		
3/2010		
4/2010		
5/2010		
6/2010		
7/2010		
8/2010		
9/2010		

Upload Contract Document

Instructions:

- Each attachment cannot be larger than 10 MB.
- Attachments must have one of the following extensions: .pdf, .doc, .docx, .xls.
- If documents are scanned, scan them using PDF format.

Attached files:  Comment  Submit

Slide 18  
Slide notes: Enter your monthly data.

Class Date	RCAT SCE Claims	Material Change
11/0/09	212	
11/0/09		
13/0/09		
1/0/10		
2/0/10		
3/0/10		
4/0/10		
5/0/10		
6/0/10		
7/0/10		
8/0/10		
9/0/10		

Slide 19  
Slide notes:

Class Date	RCAT SCE Claims	Material Change
11/0/09	212	
11/0/09		
13/0/09		
1/0/10		
2/0/10		
3/0/10		
4/0/10		
5/0/10		
6/0/10		
7/0/10		
8/0/10		
9/0/10		

Slide 20  
Slide notes:

Class Date	RCAT SCE Claims	Material Change
11/0/09	212	
11/0/09	212	
13/0/09		
1/0/10		
2/0/10		
3/0/10		
4/0/10		
5/0/10		
6/0/10		
7/0/10		
8/0/10		
9/0/10		

Slide 21  
Slide notes:

Class Date	RCAT SCE Claims	Material Change
11/0/09	212	
11/0/09	212	
13/0/09	212	
1/0/10		
2/0/10		
3/0/10		
4/0/10		
5/0/10		
6/0/10		
7/0/10		
8/0/10		
9/0/10		

Slide 22  
Slide notes:

Class Date	RCAT SCE Claims	Material Change
11/0/09	212	
11/0/09		
13/0/09	212	
1/0/10	211	
2/0/10		
3/0/10		
4/0/10		
5/0/10		
6/0/10		
7/0/10		
8/0/10		
9/0/10		

Slide 23  
Slide notes:

Class Date	RCAT SCE Claims	Material Change
11/0/09	212	
11/0/09		
13/0/09	212	
1/0/10	211	
2/0/10	212	
3/0/10		
4/0/10		
5/0/10		
6/0/10		
7/0/10		
8/0/10		
9/0/10		

Slide 24  
Slide notes:

EQ 0010010000

Enter NCAT SCE Claims

Claim Date	NCAT SCE Claims	Material Change
10/0909	212	
11/0909	212	
12/0909	212	
1/0910	211	
2/0910	212	
3/0910	211	
4/0910		
5/0910		
6/0910		
7/0910		
8/0910		
9/0910		

Upload Contract Document

Instructions

- Each attachment cannot be larger than 10 MB.
- Attachments must have one of the following extensions: pdf, doc, docx, xls.
- If documents are scanned, scan them using PDF format.
- DO NOT attach documents that have not been

Attached files

Comment

Slide 25  
Slide notes:

EQ 0010010000

Enter NCAT SCE Claims

Claim Date	NCAT SCE Claims	Material Change
10/0909	212	
11/0909	212	
12/0909	212	
1/0910	211	
2/0910	212	
3/0910	211	
4/0910	212	
5/0910		
6/0910		
7/0910		
8/0910		
9/0910		

Upload Contract Document

Instructions

- Each attachment cannot be larger than 10 MB.
- Attachments must have one of the following extensions: pdf, doc, docx, xls.
- If documents are scanned, scan them using PDF format.
- DO NOT attach documents that have not been

Attached files

Comment

Slide 26  
Slide notes:

EQ 0010010000

Enter NCAT SCE Claims

Claim Date	NCAT SCE Claims	Material Change
10/0909	212	
11/0909	212	
12/0909	212	
1/0910	211	
2/0910	212	
3/0910	211	
4/0910	212	
5/0910	212	
6/0910		
7/0910		
8/0910		
9/0910		

Upload Contract Document

Instructions

- Each attachment cannot be larger than 10 MB.
- Attachments must have one of the following extensions: pdf, doc, docx, xls.
- If documents are scanned, scan them using PDF format.
- DO NOT attach documents that have not been

Attached files

Comment

Slide 27  
Slide notes:

EQ 0010010000

Enter NCAT SCE Claims

Claim Date	NCAT SCE Claims	Material Change
10/0909	212	
11/0909	212	
12/0909	212	
1/0910	211	
2/0910	212	
3/0910	211	
4/0910	212	
5/0910	212	
6/0910	254	
7/0910		
8/0910		
9/0910		

Upload Contract Document

Instructions

- Each attachment cannot be larger than 10 MB.
- Attachments must have one of the following extensions: pdf, doc, docx, xls.
- If documents are scanned, scan them using PDF format.
- DO NOT attach documents that have not been

Attached files

Comment

Slide 28  
Slide notes:

EQ 0010010000

Enter NCAT SCE Claims

Claim Date	NCAT SCE Claims	Material Change
10/0909	212	
11/0909	212	
12/0909	212	
1/0910	211	
2/0910	212	
3/0910	211	
4/0910	212	
5/0910	212	
6/0910	254	
7/0910	212	
8/0910		
9/0910		

Upload Contract Document

Instructions

- Each attachment cannot be larger than 10 MB.
- Attachments must have one of the following extensions: pdf, doc, docx, xls.
- If documents are scanned, scan them using PDF format.
- DO NOT attach documents that have not been

Attached files

Comment

Slide 29  
Slide notes:

EQ 0010010000

Enter NCAT SCE Claims

Claim Date	NCAT SCE Claims	Material Change
10/0909	212	
11/0909	212	
12/0909	212	
1/0910	211	
2/0910	212	
3/0910	211	
4/0910	212	
5/0910	212	
6/0910	254	
7/0910	212	
8/0910	212	
9/0910		

Upload Contract Document

Instructions

- Each attachment cannot be larger than 10 MB.
- Attachments must have one of the following extensions: pdf, doc, docx, xls.
- If documents are scanned, scan them using PDF format.
- DO NOT attach documents that have not been

Attached files

Comment

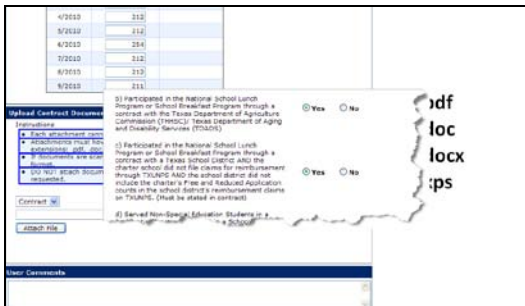
Slide 30  
Slide notes:



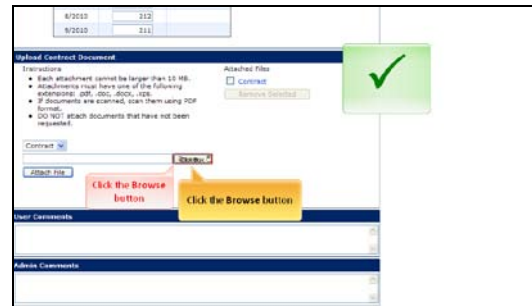
Slide 31  
Slide notes:



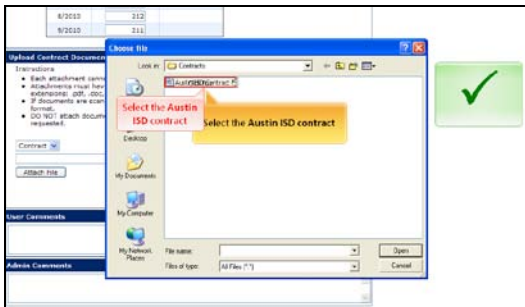
Slide 32  
Slide notes:



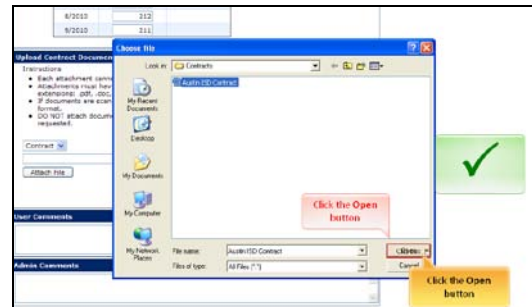
Slide 33  
Slide notes: If the answers to questions B \*\*or\*\* C are Yes, then you **must** attach the actual contract. As noted in the instructions, contracts cannot be larger than 10 megabytes, contracts must be one of the following extensions: .pdf, .doc, .docx, or .xps. If documents are scanned they must be in PDF format, and documents which have not been requested, should **not** be attached.



Slide 34  
Slide notes: Navigate to the document. Click the browse button.



Slide 35  
Slide notes: Select the contract to attach.



Slide 36  
Slide notes: Click the **Open** button.



Slide 37

Slide notes: The document path will appear on the page. Click the **Attach File** button.



Slide 38

Slide notes:



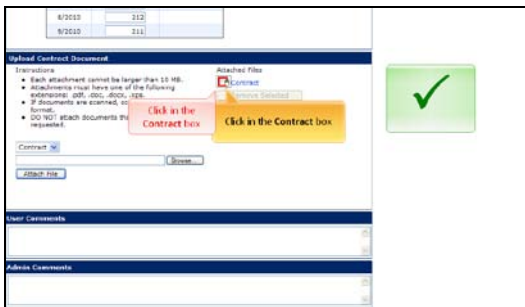
Slide 39

Slide notes: In this example, a contract has already been attached, as indicated by the error message at the top of the page. We will need to delete the already attached contract, before we can add the correct one.



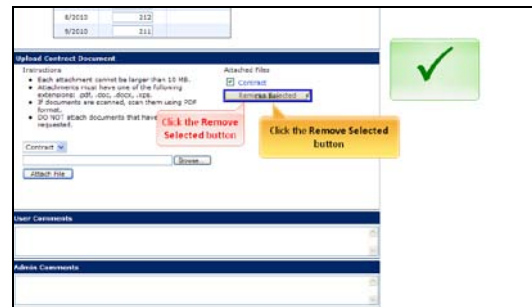
Slide 40

Slide notes:



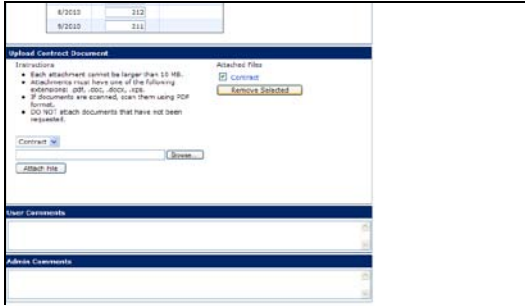
Slide 41

Slide notes: To remove the previously attached contract, click the contract box under **Attached Files**.



Slide 42

Slide notes: The **Removed Selected** button will become enabled. To delete the attached contract, click the **Remove Selected** button.



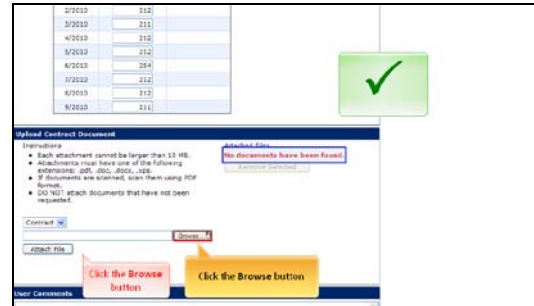
Slide 43  
Slide notes:



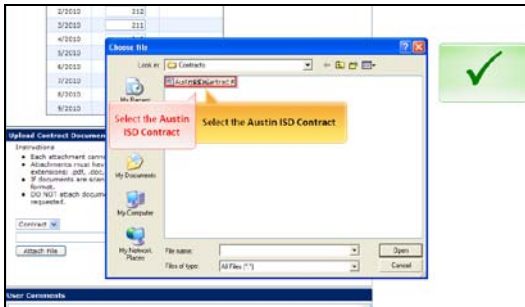
Slide 44  
Slide notes:



Slide 45  
Slide notes:



Slide 46  
Slide notes: The page will refresh and the "No documents have been found" message will appear indicating that the document was deleted. Navigate to the document you wish to attach.

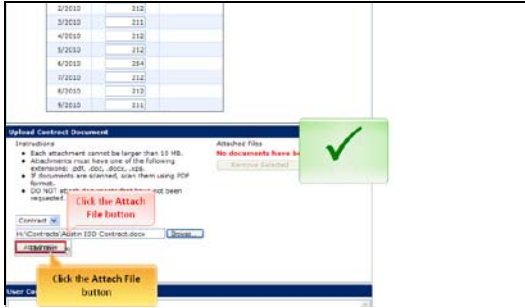


Slide 47  
Slide notes: Click on the document to select it.



Slide 48  
Slide notes: Click the Open button.





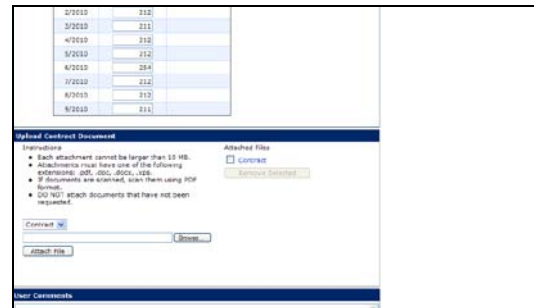
Slide 49  
Slide notes: Click the Attach File button to attach the selected document.



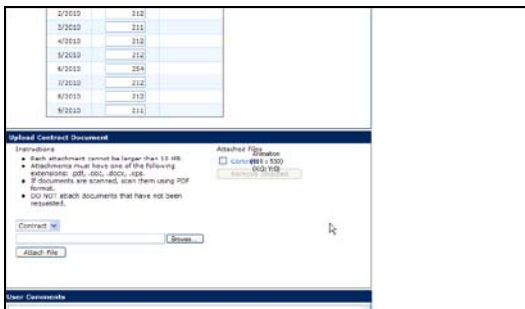
Slide 50  
Slide notes:



Slide 51  
Slide notes: The page will refresh.



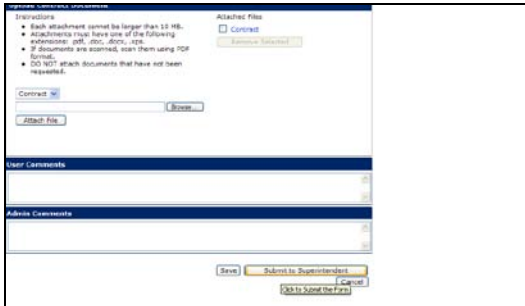
Slide 52  
Slide notes: And the contract will now be attached.



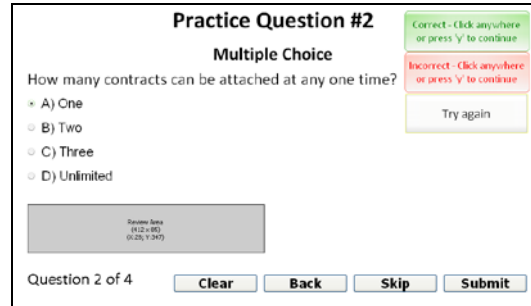
Slide 53  
Slide notes:



Slide 54  
Slide notes: When all entries are complete, click the \*\*Submit to Superintendent\*\* button.



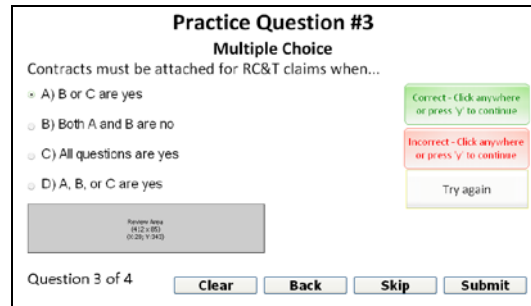
Slide 55  
Slide notes:



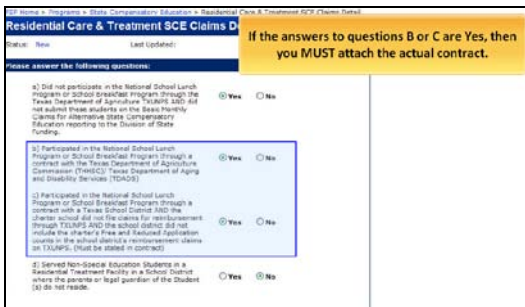
Slide 56  
Slide notes: How many contracts can be attached at any one time?



Slide 57  
Slide notes: Only **one** contract can be attached, as indicated by the error message at the top of the page.



Slide 58  
Slide notes: Contracts must be attached for RC&T claims when...



Slide 59  
Slide notes: If the answers to questions B or C are Yes, then you **must** attach the actual contract.



Slide 60  
Slide notes: Click to add notes for the selected slide



Slide 61

Slide notes: The SCE Enrollment report allows users to view the SCE enrollment, which is the highest six-month average of the total claims. This is the sum of TDA SCE claims, Alternative basic monthly claims, Contract SCE claims and RC&T SCE claims.



Slide 62

Slide notes: From the SCE main page, select the SCE Enrollment Report link.



Slide 63

Slide notes:



Slide 64

Slide notes: The SCE Enrollment report page will appear. Be sure to select the correct year. Click the School Year drop down.



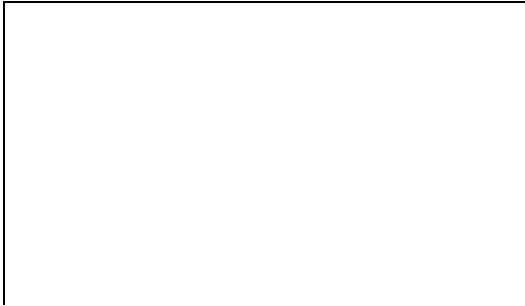
Slide 65

Slide notes: Select the 2010 2011 school year.



Slide 66

Slide notes: Click the \*\*Update\*\* button.



Slide 67  
Slide notes:

**SCE Enrollment Report**

School Year: 2010-2011 | Update

Class Date	Free Lunch Claims	Reduced Price Lunch Claims	Alternative BMC	Contract SCE Claims	RCAT SCE Claims	Total	SCE Enrollment
10/20/10	121	79	0	0	0	194	216.33
11/20/10	123	75	0	0	0	198	
12/20/10	121	79	0	0	0	200	
01/20/11	114	79	0	0	0	193	
02/20/11	123	71	0	0	0	194	
03/20/11	128	69	0	0	0	197	
04/20/11	135	69	0	0	0	204	
05/20/11	0	0	0	0	0	0	
06/20/11	0	0	0	0	0	0	
07/20/11	179	79	0	0	0	254	
09/20/11	165	79	0	0	0	244	

Slide 68  
Slide notes: The page will refresh, and the 2010 2011 school year data will appear.

**SCE Enrollment Report**

School Year: 2010-2011 | Update

Class Date	Free Lunch Claims	Reduced Price Lunch Claims	Alternative BMC	Contract SCE Claims	RCAT SCE Claims	Total	SCE Enrollment
10/20/10	121	79	0	0	0	194	216.33
11/20/10	123	75	0	0	0	198	
12/20/10	121	79	0	0	0	200	
01/20/11	114	79	0	0	0	193	
02/20/11	123	71	0	0	0	194	
03/20/11	128	69	0	0	0	197	
04/20/11	135	69	0	0	0	204	
05/20/11	0	0	0	0	0	0	
06/20/11	0	0	0	0	0	0	
07/20/11	179	79	0	0	0	254	
09/20/11	165	79	0	0	0	244	

Slide 69  
Slide notes: The SCE Enrollment Report lists all the SCE claims submitted for the selected year. The claims are broken down by month, and by category. Also included is the SCE enrollment, which is the highest six-month average of the total claims submitted.

**SCE Enrollment Report**

School Year: 2010-2011 | Update

Class Date	Free Lunch Claims	Reduced Price Lunch Claims	Alternative BMC	Contract SCE Claims	RCAT SCE Claims	Total	SCE Enrollment
10/20/10	121	79	0	0	0	194	216.33
11/20/10	123	75	0	0	0	198	
12/20/10	121	79	0	0	0	200	
01/20/11	114	79	0	0	0	193	
02/20/11	123	71	0	0	0	194	
03/20/11	128	69	0	0	0	197	
04/20/11	135	69	0	0	0	204	
05/20/11	0	0	0	0	0	0	
06/20/11	0	0	0	0	0	0	
07/20/11	179	79	0	0	0	254	
09/20/11	165	79	0	0	0	244	

Click the Cancel button

Slide 70  
Slide notes: When you are done reviewing the report, click the cancel button to exit the page.

**State Compensatory Education**

Program Contact: Kim Wall (512) 333-3333, kwall@tea.state.tx.us

Upcoming Events: 8/31/2011 - State Comp TE TDA Claims Close Date, 9/2/2011 - State Comp TE TDA Claims Open Date, 8/31/2011 - State Comp TE Estimates Close Date, 9/13/2011 - State Comp TE Estimates Open Date, 8/31/2011 - State Comp TE Contract Claims

Actions: CONTACT INFORMATION, Submit SCE Denials, Review Texas Department of Agriculture SCE Claims, Submit Alternative State Penalty Claims, Submit Contract SCE Claims, Submit Residential Care & Treatment SCE Claims

Reports: SCE Enrollment Report

More About SCE: State Compensatory Education

Training: State Compensatory Education Free Online Training Module

Slide 71  
Slide notes: You will be returned to the SCE main page.

**Practice Question #4**  
Multiple Choice

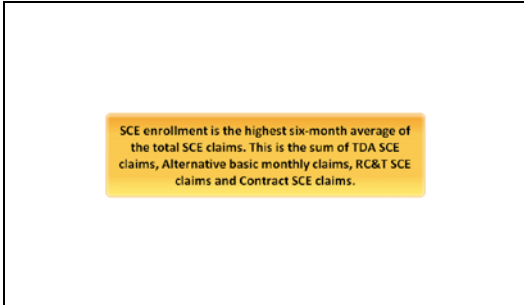
The definition of SCE Enrollment is...

- A) Number of students enrolled in charter schools
- B) The number of students enrolled in all districts
- C) The average number of students enrolled in both district and charter schools
- D) The highest six-month average of the total claims

Question 4 of 4 | Clear | Back | Skip | Submit

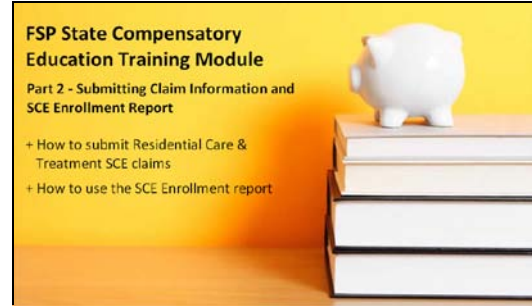
Correct - Click anywhere or press 'Y' to continue  
Incorrect - Click anywhere or press 'Y' to continue  
Try again

Slide 72  
Slide notes: The definition of SCE Enrollment is...



Slide 73

Slide notes: SCE enrollment is the highest six-month average of the total SCE claims. This is the sum of TDA SCE claims, Alternative basic monthly claims, RC&T SCE claims and Contract SCE claims.



Slide 74

Slide notes: Congratulations! You have completed the Submitting Claim Information and SCE Enrollment report part of the FSP State Compensatory Education training module. You have learned, How to submit Residential Care & Treatment claims...and How to use the SCE Enrollment report. To continue your SCE training, return to the training home page and select the next part.



Slide 75

Slide notes: