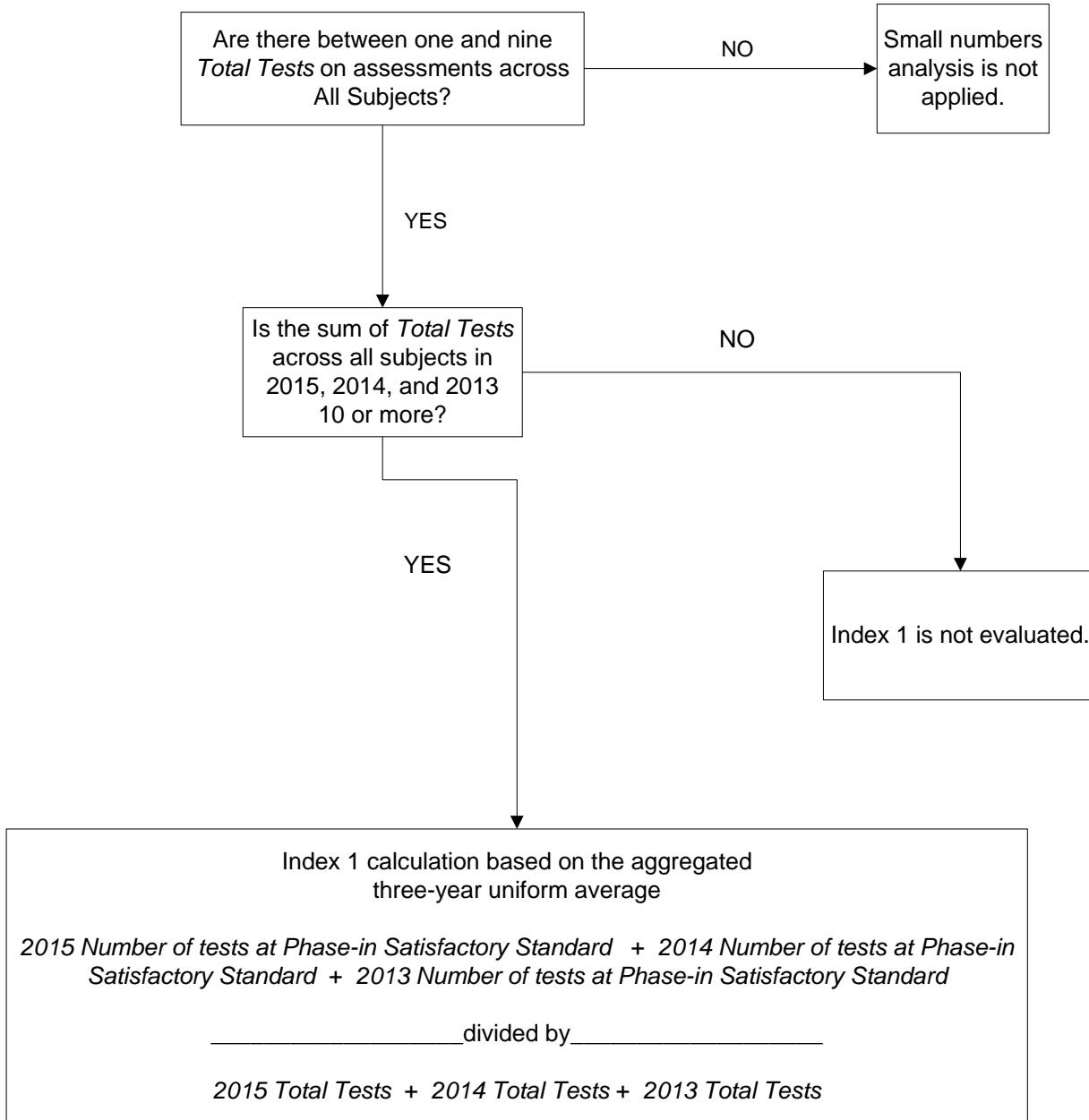


2015 Small Numbers Analysis Index 1: Student Achievement

ALL DISTRICTS AND CAMPUS TYPES

Small numbers analysis is applied if the *Total Tests* on assessments across **All Subjects** in 2015 is between one and nine. There must be at least one test in order for Index 1 to be evaluated.

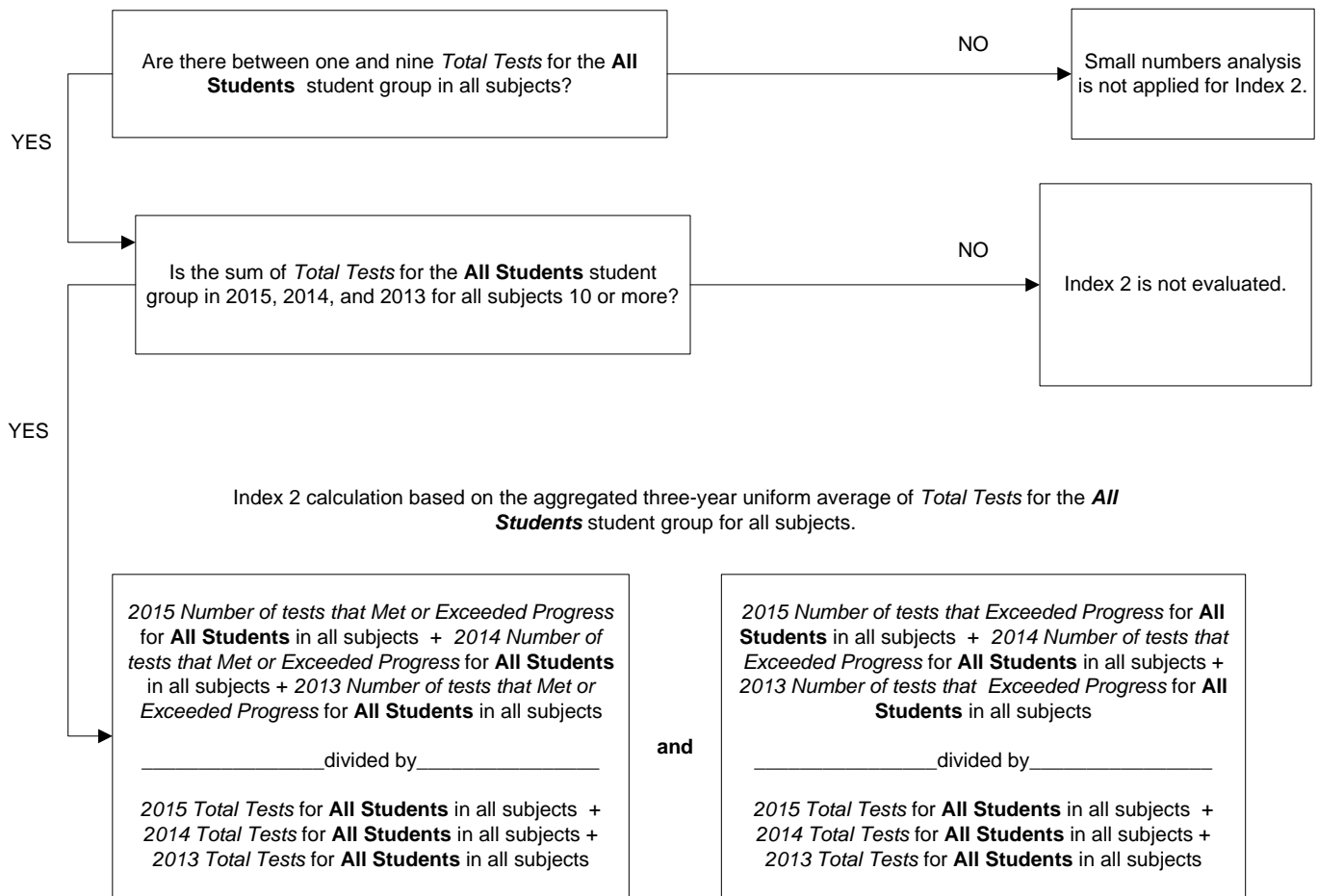


2015 Small Numbers Analysis Index 2: Student Progress

ALL DISTRICTS AND CAMPUS TYPES

Small numbers analysis is applied for the **All Students** student group across all subject areas combined (Reading/ELA, Mathematics, and Writing) if there are between one and nine *Total Tests* in 2015. There must be at least one test in order for Index 2 to be evaluated.

All Subjects (Reading/ELA, Mathematics, and Writing)

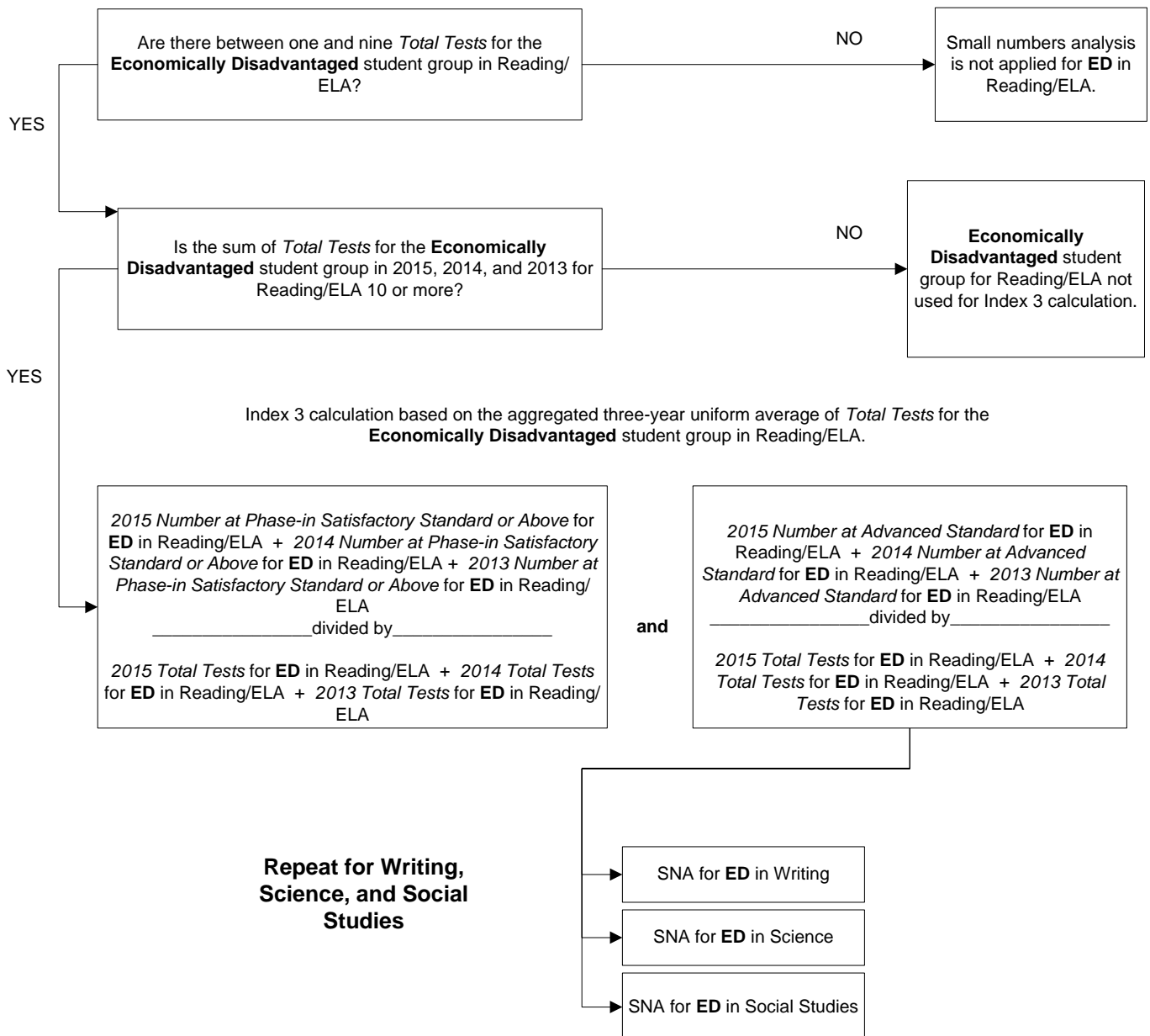


2015 Small Numbers Analysis Index 3: Closing Performance Gaps

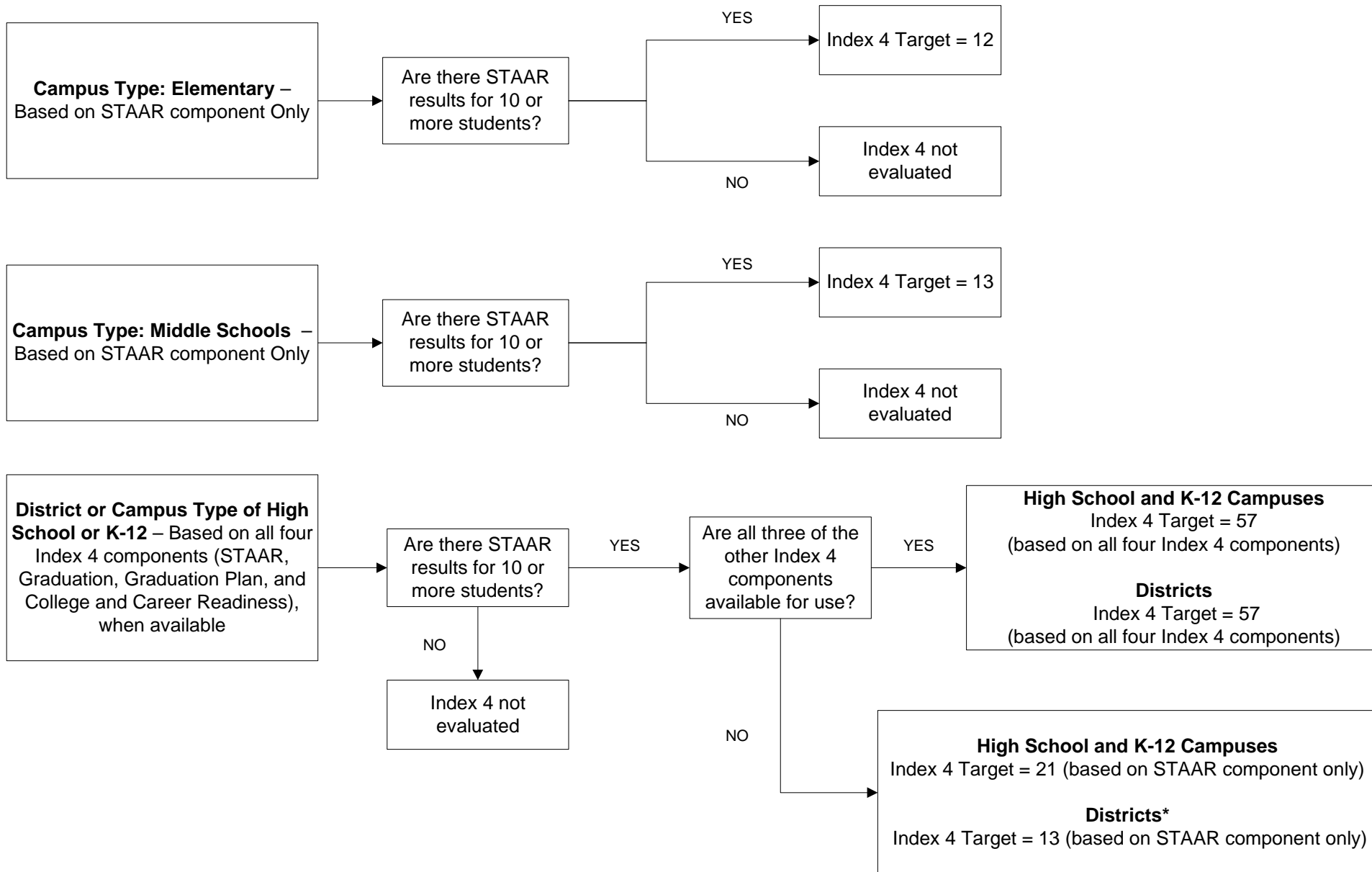
ALL DISTRICTS AND CAMPUS TYPES

Small numbers analysis (SNA) is applied for the **Economically Disadvantaged (ED)** student group by subject (Reading/ELA, Writing, Science, and Social Studies) if there are between one and nine *Total Tests* in 2015. There must be at least one test in order for Index 3 to be evaluated. Note, for 2015, no SNA will be applied to mathematics.

Reading/ELA



Index 4 Target Determination For Non-AEA (Standard) Districts and Campuses



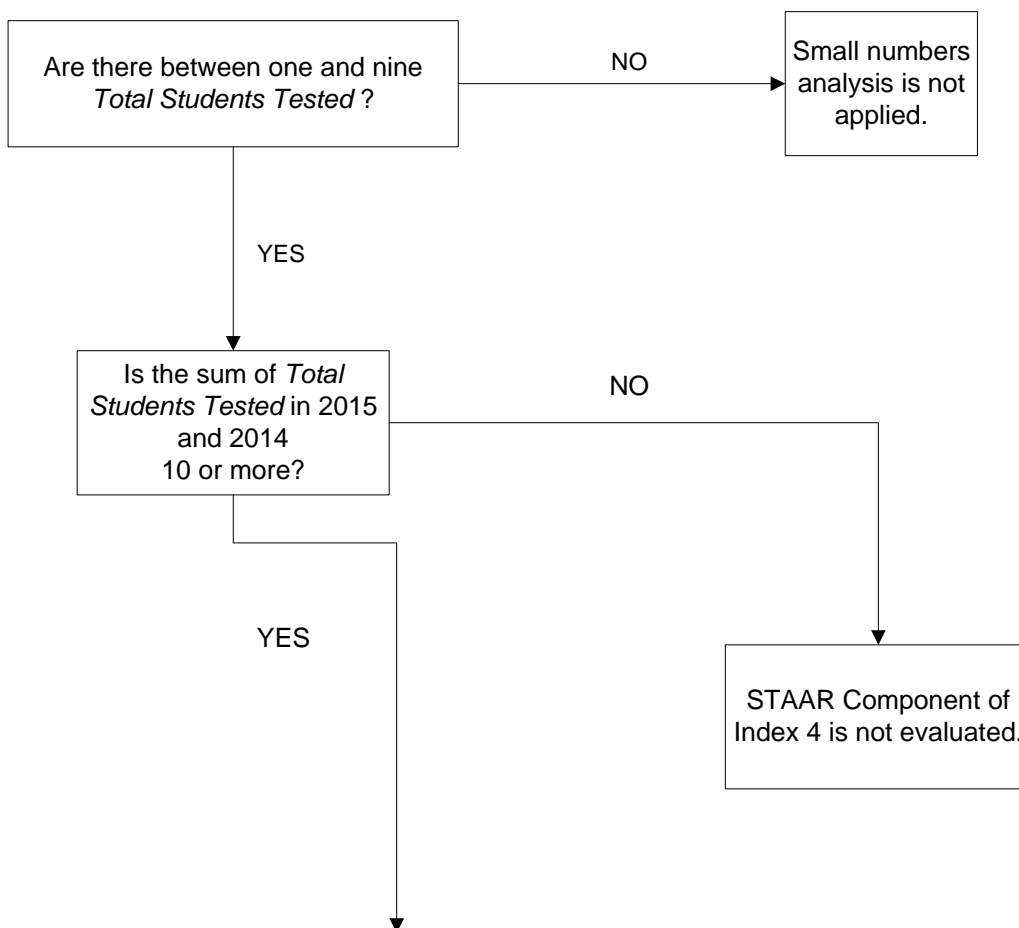
*A district or charter comprised of only one campus that shares the same 2015 performance data with that campus must meet the index target required for the campus in order to demonstrate acceptable performance.

2015 Small Numbers Analysis Index 4: Postsecondary Readiness

Part One - STAAR Component

ALL DISTRICTS AND CAMPUS TYPES

Small numbers analysis is applied if the *Total Students Tested* in 2015 is between one and nine. There must be at least one student tested in order for Index 4 STAAR component to be evaluated.



Index 4 STAAR Component calculation based on the aggregated
two-year uniform average

*2015 Number of students meeting Postsecondary Readiness Standard in two or more subject
areas (or one subject area if only one subject was tested) + 2014 Number meeting
Postsecondary Readiness Standard in two or more subject areas (or one subject area if only one
subject was tested)*

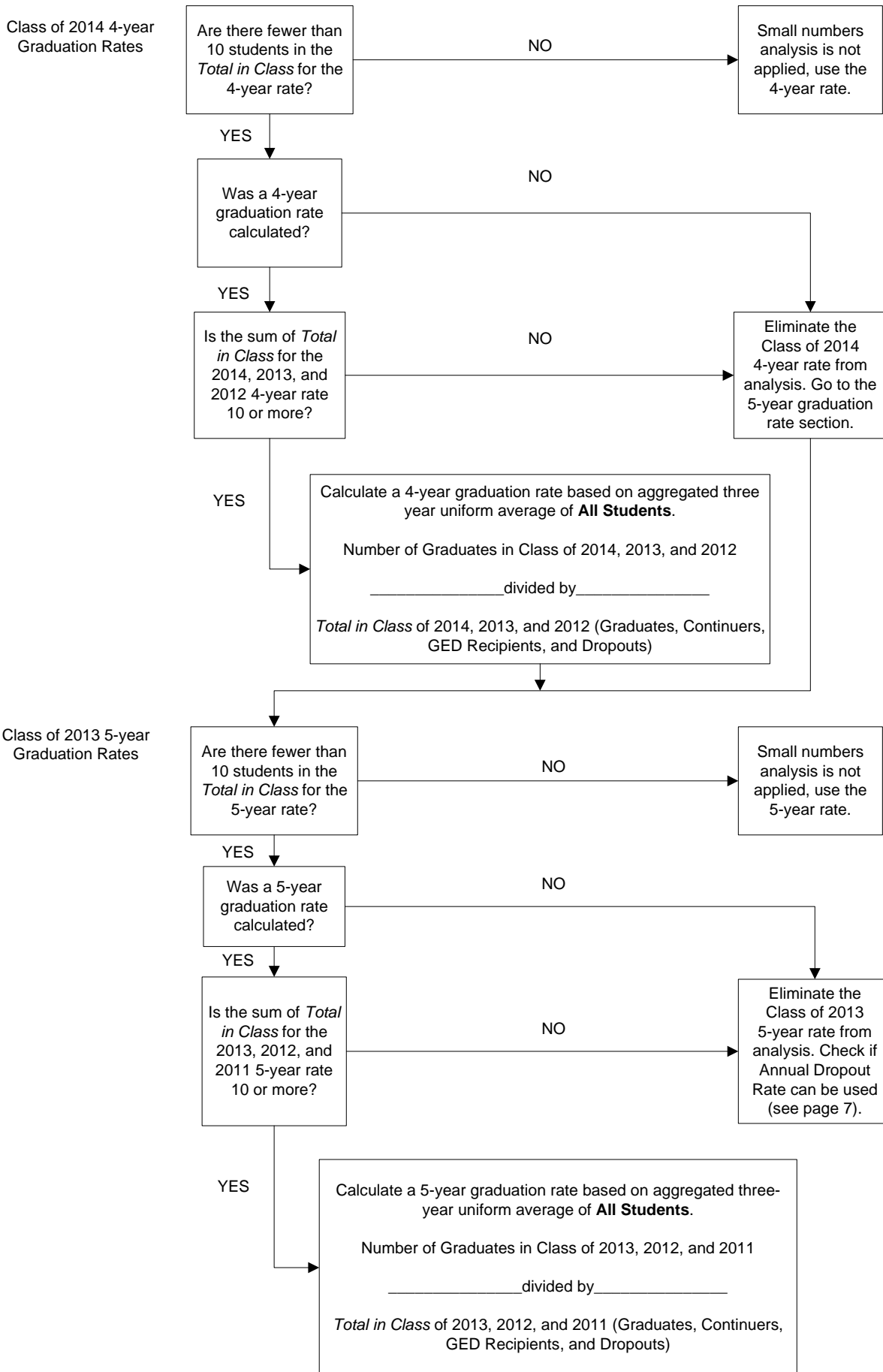
_____ divided by _____

*2015 Total number of students with test results in two or more subject areas (or one subject area
if only one subject was tested) + 2014 Total number of students with test results in two or more
subject areas (or one subject area if only one subject was tested)*

2015 Small Numbers Analysis Index 4: Postsecondary Readiness

Part Two – Graduation Rate Component STANDARD DISTRICTS AND CAMPUSES

Graduation Rate: Small numbers analysis is applied to the **All Students** student group if the *Total in Class* for the 4-year (Class of 2014) or 5-year (Class of 2013) is fewer than 10 students.



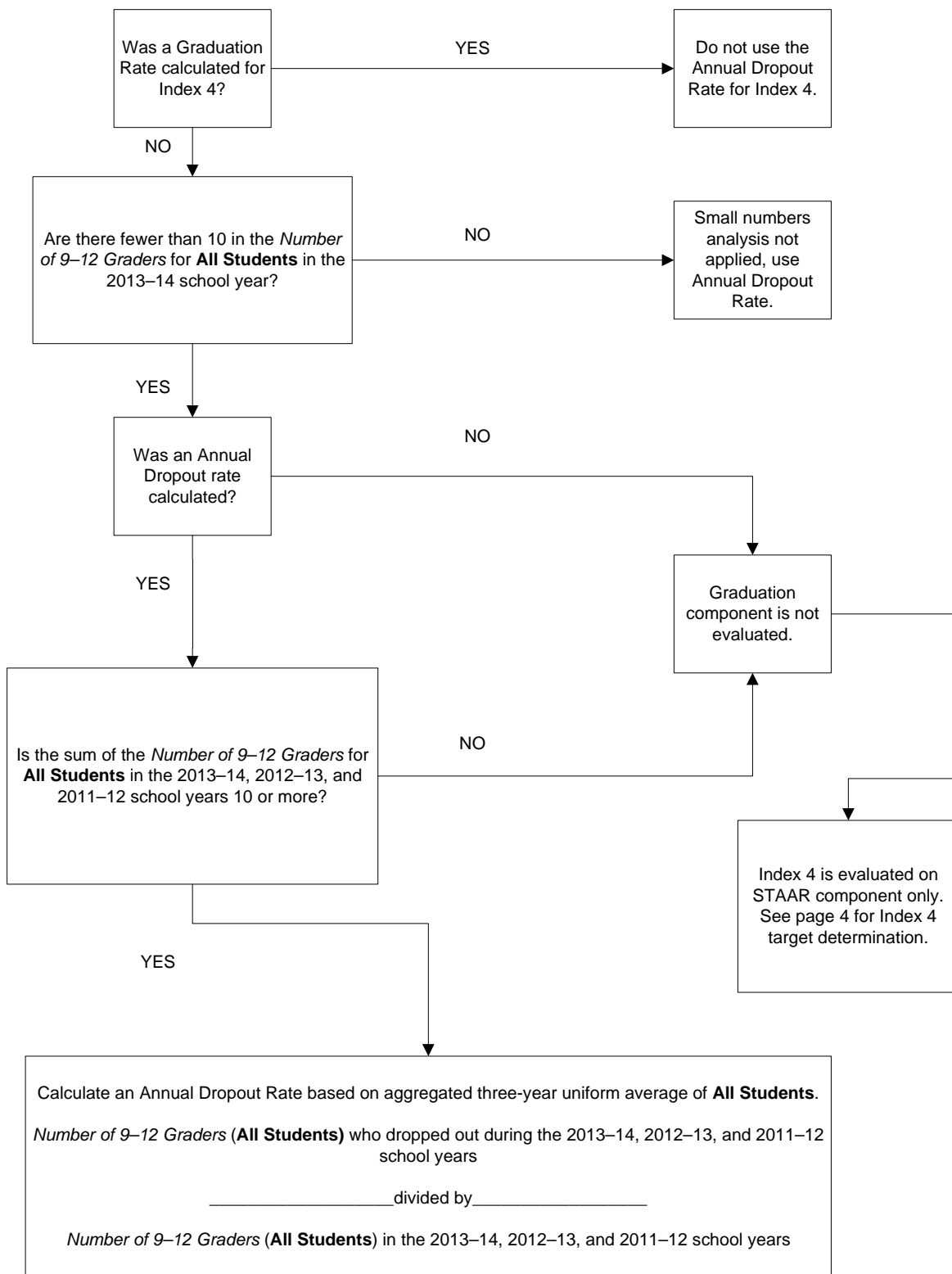
2015 Small Numbers Analysis

Index 4: Postsecondary Readiness

Part Two - Graduation Rate Component (Annual Dropouts)

ALL DISTRICTS AND CAMPUS TYPES

Annual Dropout Rate (Gr 9–12): Small numbers analysis is applied to the **All Students** student group if the *Number of 9–12 Graders* in the 2013–14 school year is fewer than 10 and if **no Graduation Rate is calculated**.



2015 Small Numbers Analysis

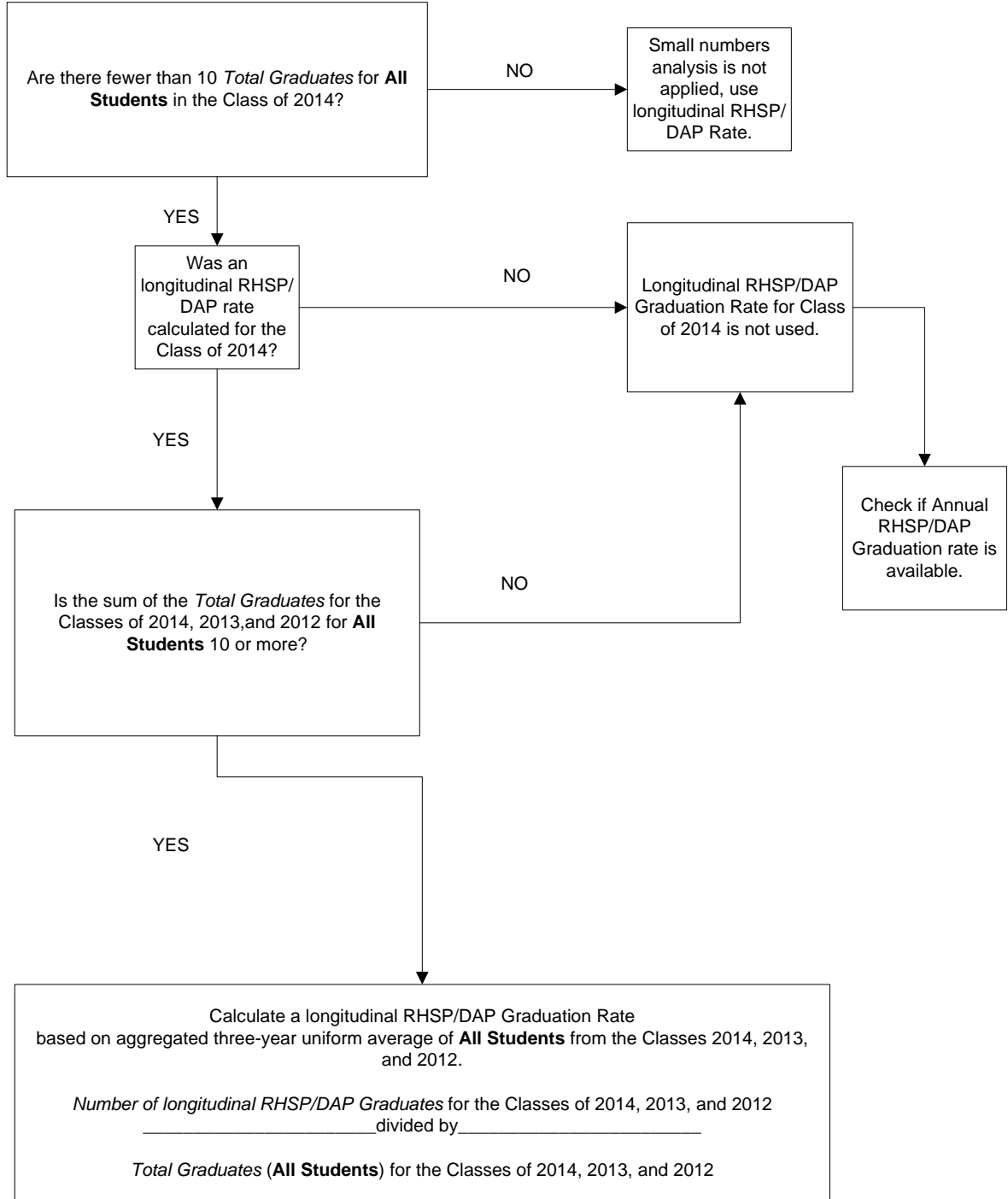
Index 4: Postsecondary Readiness

Part Three - Graduation Plan Component

STANDARD DISTRICTS AND CAMPUS TYPES

Recommended High School Program/Distinguished Achievement Program (RHSP/DAP)

Longitudinal Rates: Small numbers analysis is applied to the **All Students** student group if the *Number of Total Graduates* in the Class of 2014 is fewer than 10.



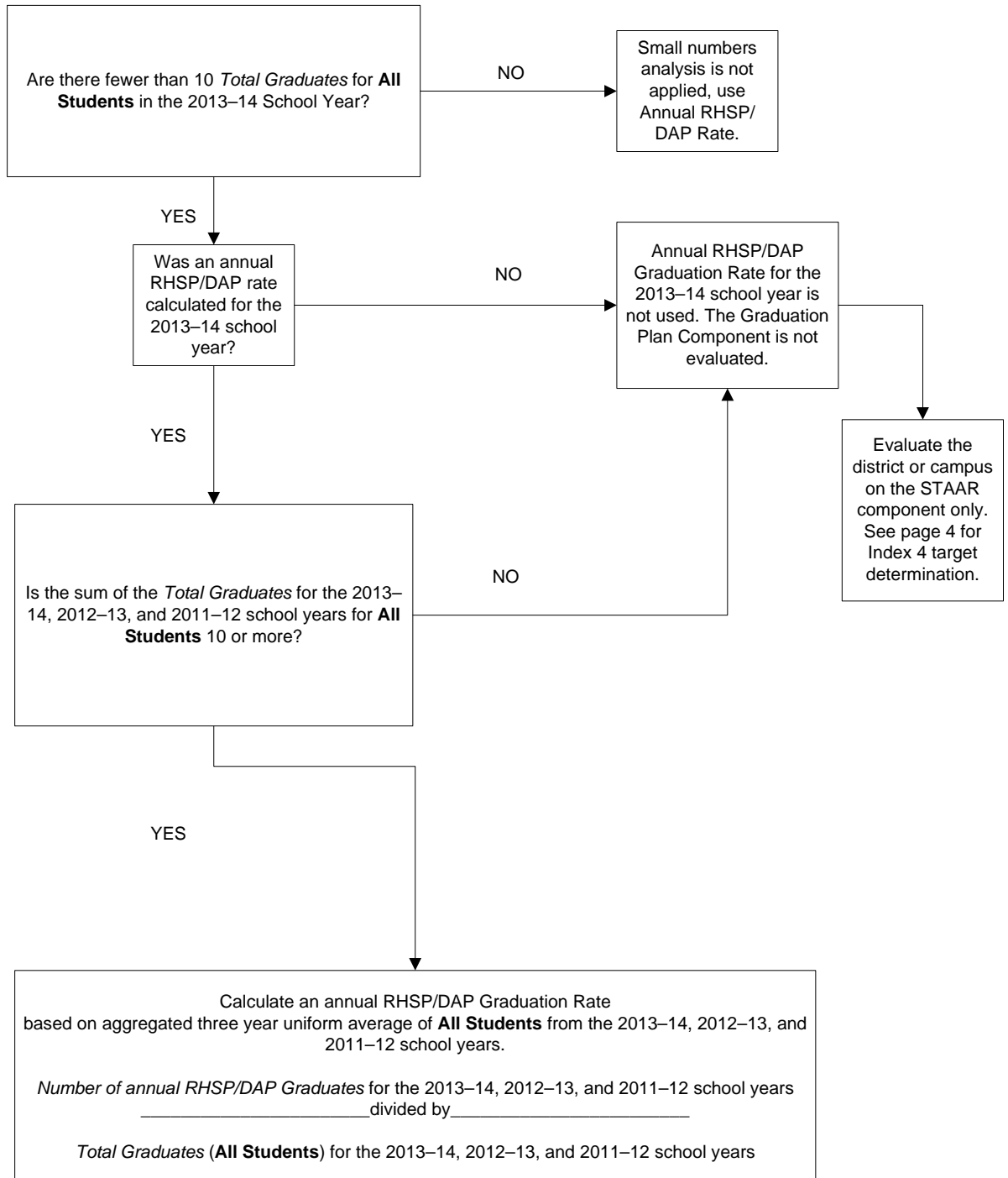
2015 Small Numbers Analysis

Index 4: Postsecondary Readiness

Part Three - Graduation Plan Component

STANDARD DISTRICTS AND CAMPUS TYPES

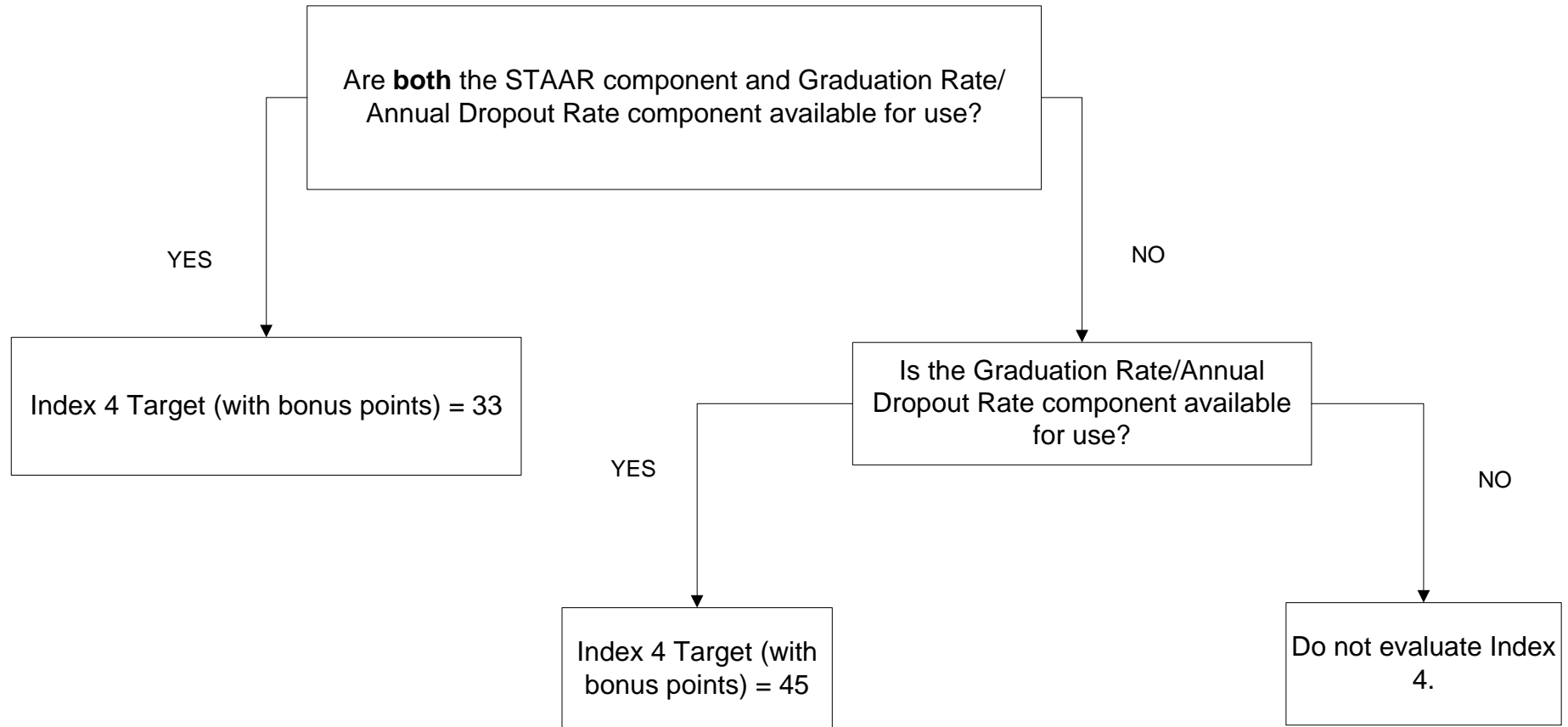
Recommended High School Program/Distinguished Achievement Program (RHSP/DAP) Annual Rates: Small numbers analysis is applied to the **All Students** student group if the *Number of Total Graduates* in the 2013–14 school year is fewer than 10 and there is no longitudinal RHSP/DAP rate available.



2015 Small Numbers Analysis
Index 4: Postsecondary Component
Part Four – College and Career Readiness
STANDARD DISTRICTS AND CAMPUS TYPES

Two-year averages for the College and Career Readiness component of Index 4 cannot be calculated because only one year of data is available in 2015.

Index 4 Target Determination For AEA Districts and Campuses

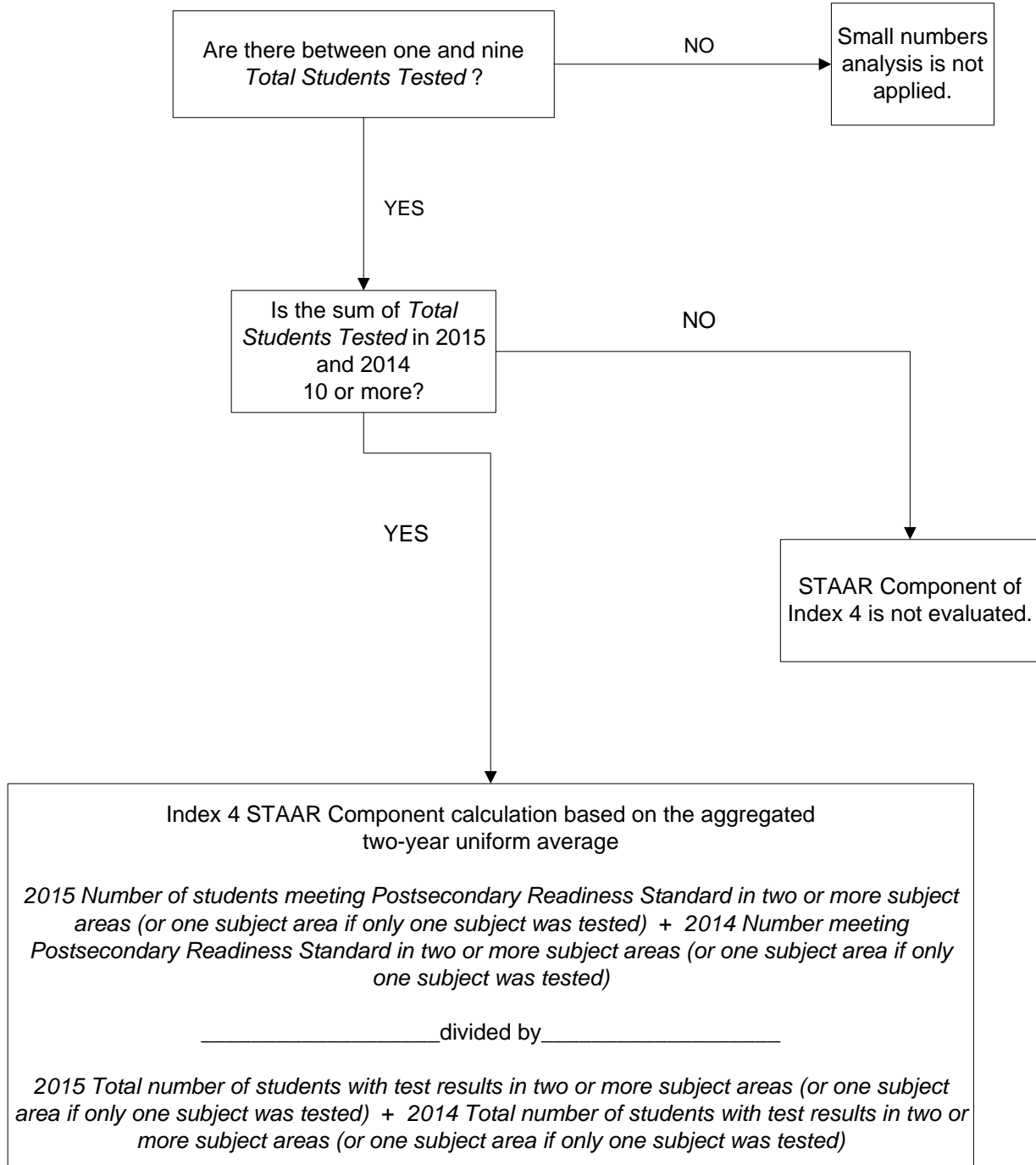


2015 Small Numbers Analysis Index 4: Postsecondary Readiness

Part One - STAAR Component

AEA DISTRICTS AND CAMPUSES

Small numbers analysis is applied if the *Total Students Tested* in 2015 is between one and nine. There must be at least one student tested in order for Index 4 STAAR component to be evaluated.

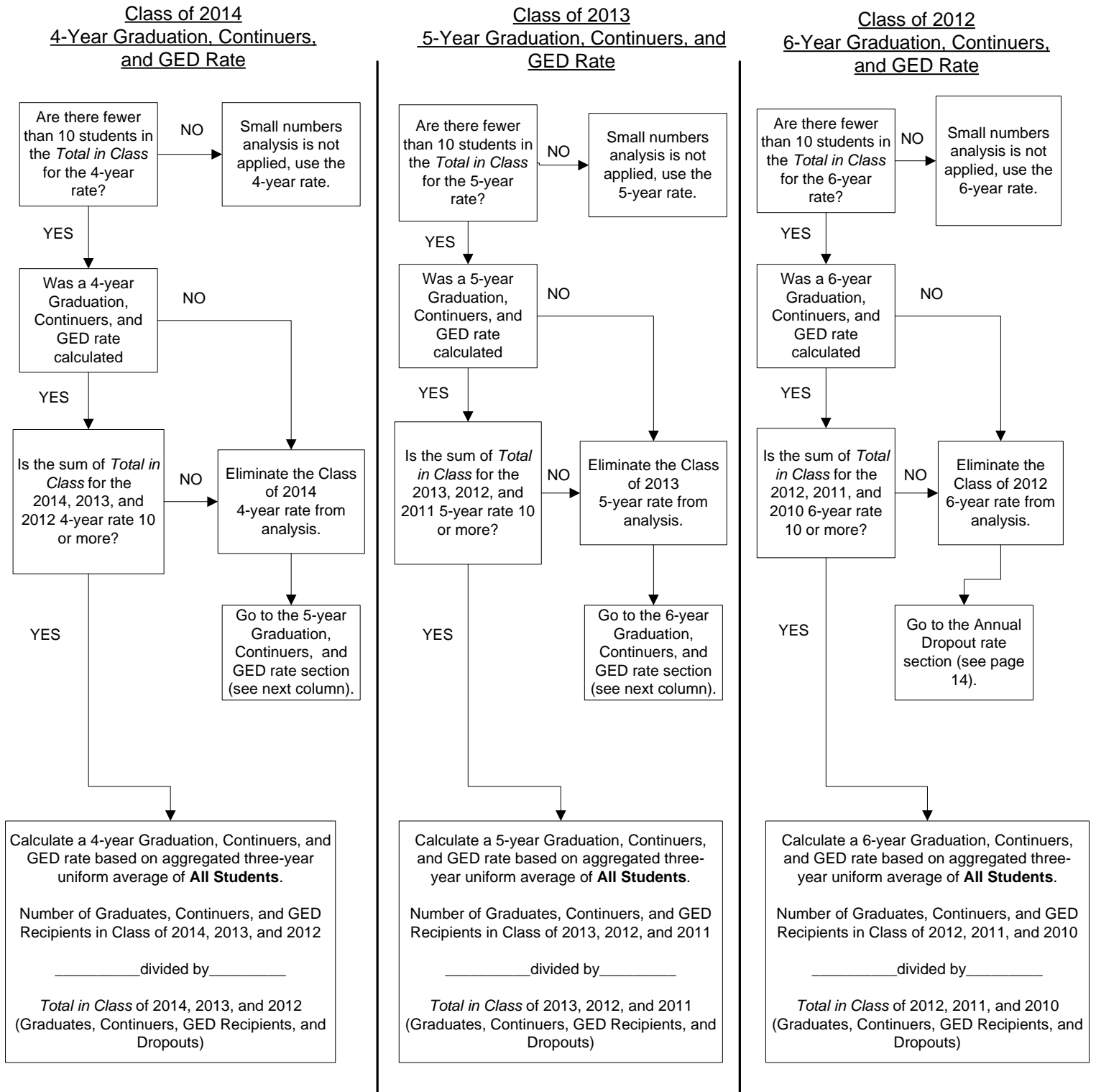


2015 Small Numbers Analysis Index 4: Postsecondary Readiness

Part Two - Graduation Rate Component

AEA DISTRICTS AND CAMPUSES

Graduation, Continuers, and GED Rate: Small numbers analysis is applied to the **All Students** student group if the *Total in Class* for the 4-year (Class of 2014), 5-year (Class of 2013), or 6-year (Class of 2012) is fewer than 10 students. AEA campuses use Graduation, Continuers, and GED rates for Index 4.



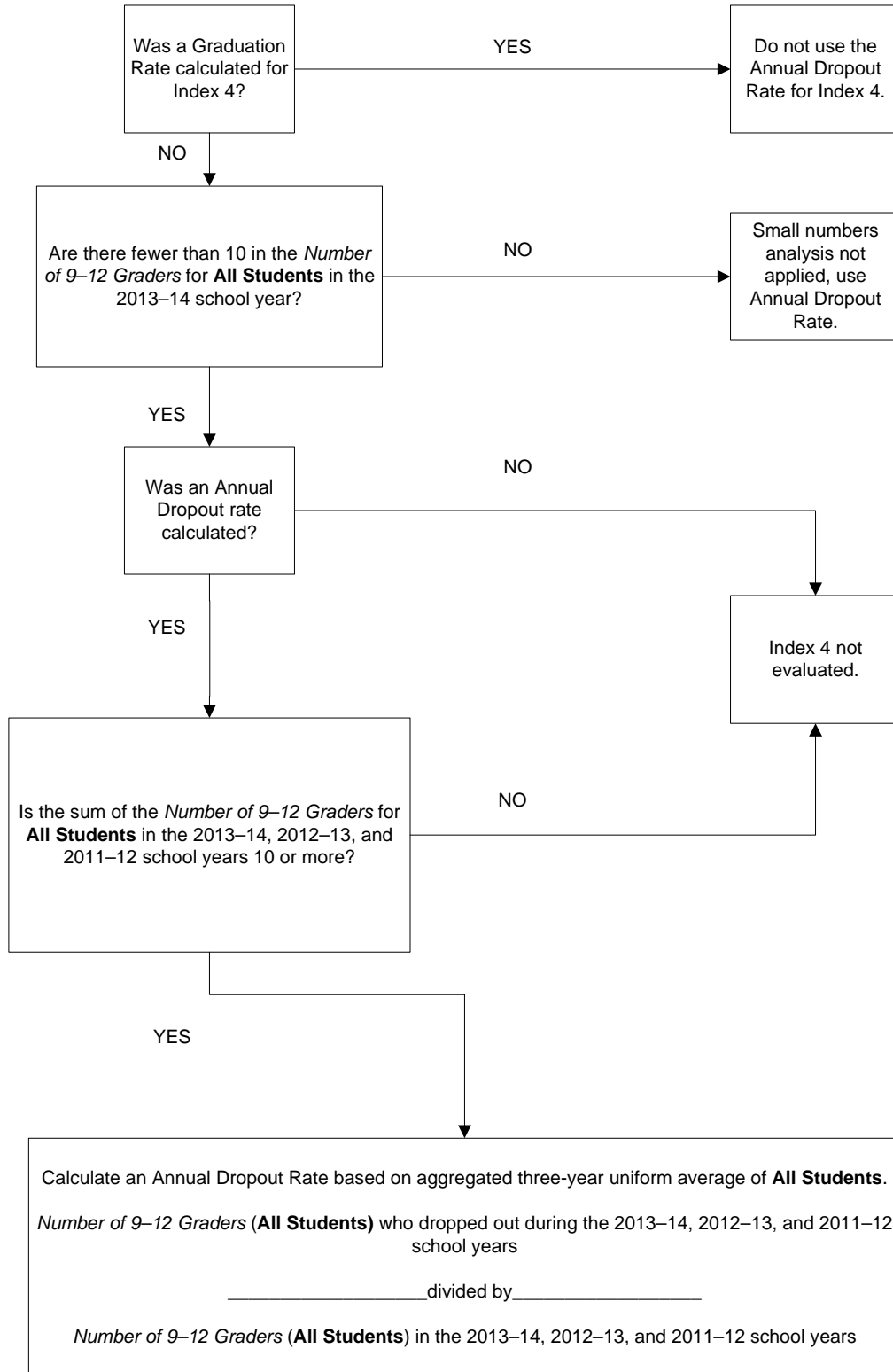
2015 Small Numbers Analysis

Index 4: Postsecondary Readiness

Part Two - Graduation Rate Component (Annual Dropouts)

AEA DISTRICTS AND CAMPUSES

Annual Dropout Rate (Gr 9–12): Small numbers analysis is applied to the **All Students** student group if the *Number of 9–12 Graders* in the 2013–14 school year is fewer than 10 and **if no Graduation Rate is calculated.**



2015 Small Numbers Analysis

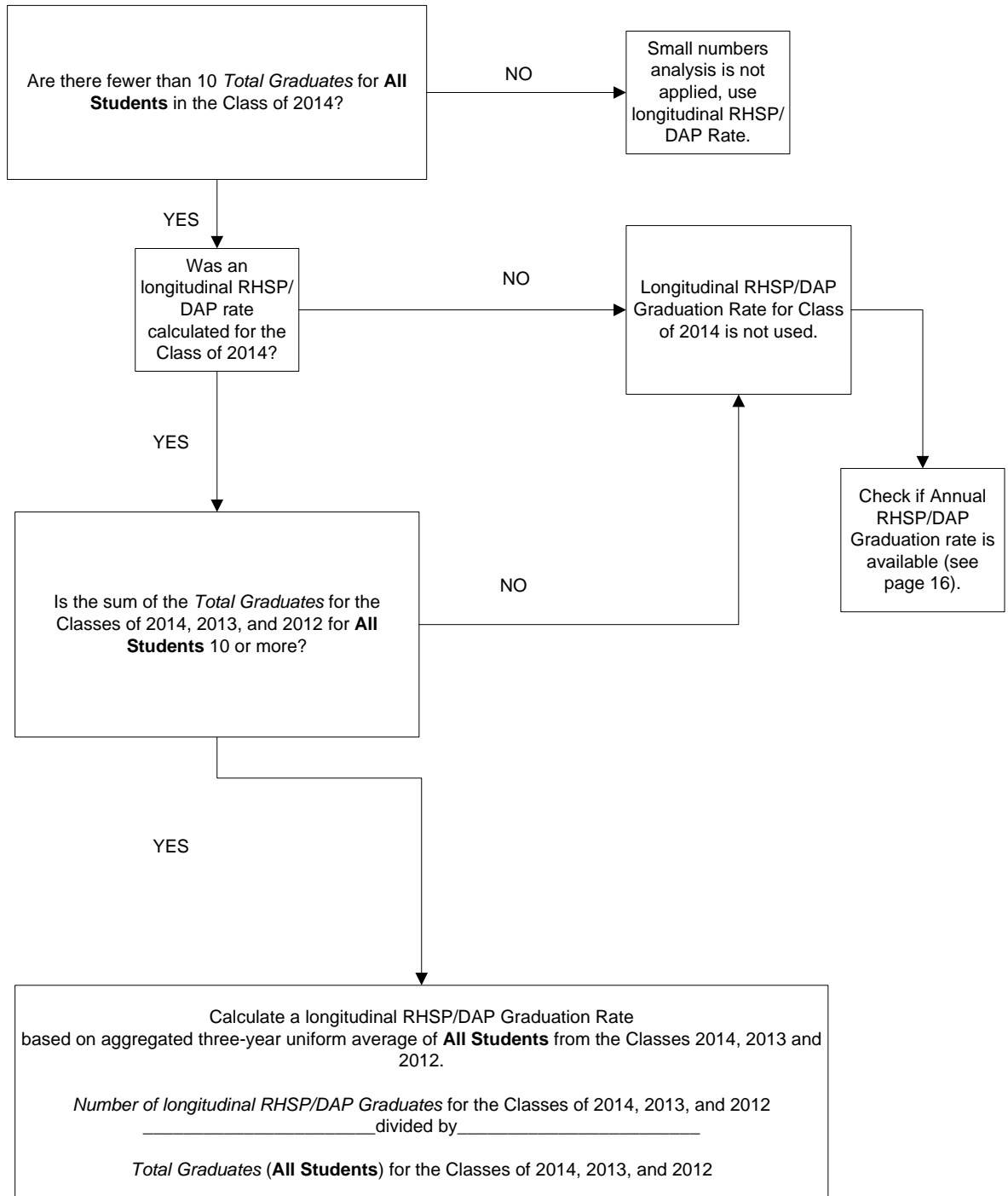
Index 4: Postsecondary Readiness

Bonus Points - Recommended High School Program/Distinguished Achievement Program (RHSP/DAP) Longitudinal Rates

AEA DISTRICTS AND CAMPUSES

Recommended High School Program/Distinguished Achievement Program (RHSP/DAP)

Longitudinal Rates: Small numbers analysis is applied to the **All Students** student group if the *Number of Total Graduates* in the Class of 2014 is fewer than 10.

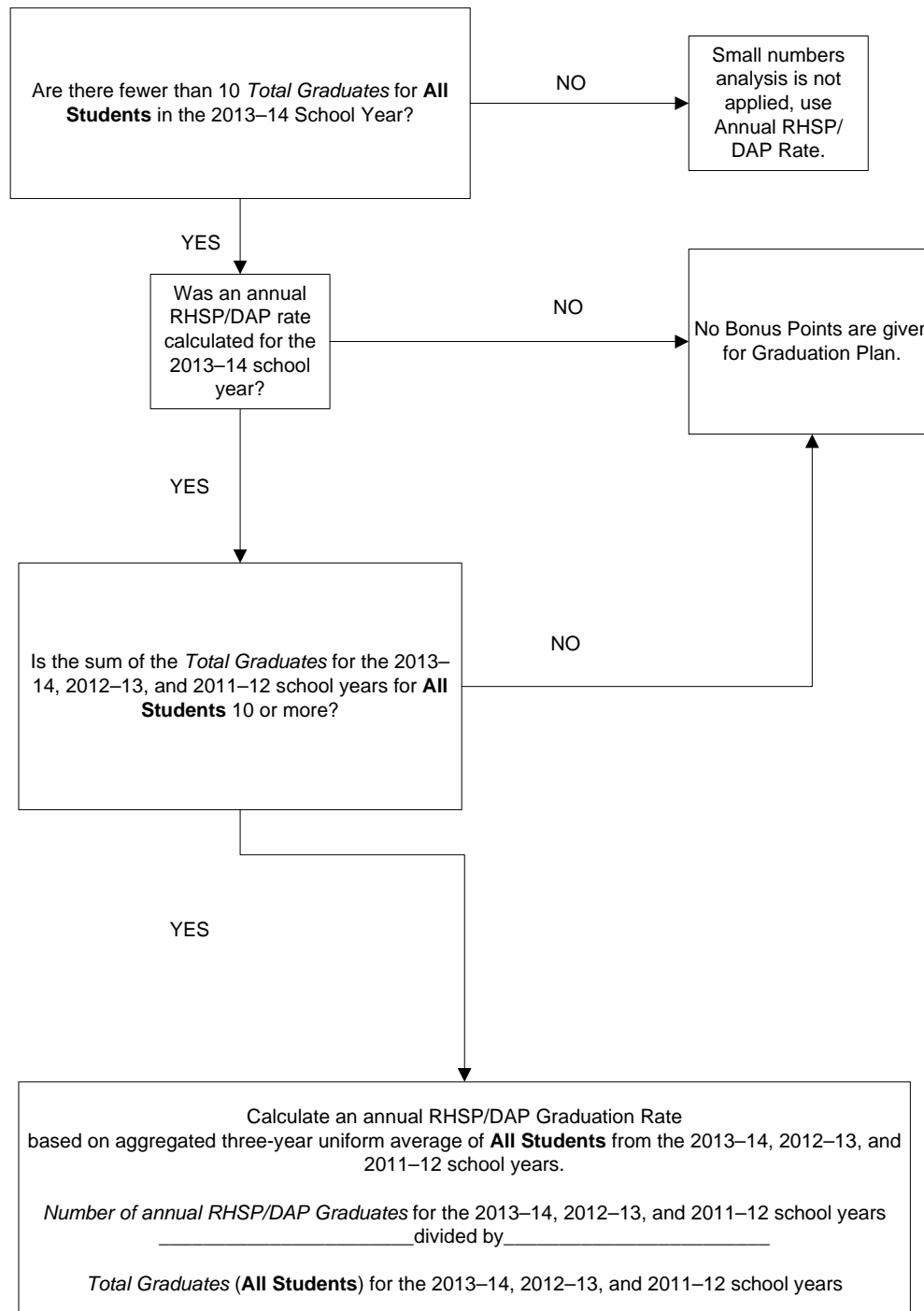


2015 Small Numbers Analysis Index 4: Postsecondary Readiness

Bonus Points - Recommended High School Program/Distinguished Achievement Program (RHSP/DAP) Annual Rates

AEA DISTRICTS AND CAMPUSES

Small numbers analysis is applied to the **All Students** student group if the *Number of Total Graduates* in the 2013–14 school year is fewer than 10.



2015 Small Numbers Analysis
Index 4: Postsecondary Component

Bonus Points – College and Career Readiness

AEA DISTRICTS AND CAMPUSES

Two-year averages for the College and Career Readiness component of Index 4 Bonus Points cannot be calculated because only one year of data is available in 2015.

**2015 Small Numbers Analysis
Index 4: Postsecondary Readiness**

Bonus Points – Excluded Students

AEA DISTRICTS AND CAMPUSES

Small numbers analysis is not applied to Excluded Students bonus points for Index 4.