



The SAT[®] Suite of Assessments: What Do They Tell Us About College & Career Readiness?

What Research Says About College & Career Readiness

Based on the **best available research** evidence of the knowledge, skills and understandings that are **essential for college and career readiness** and success the SAT Suite of Assessments requires students to:

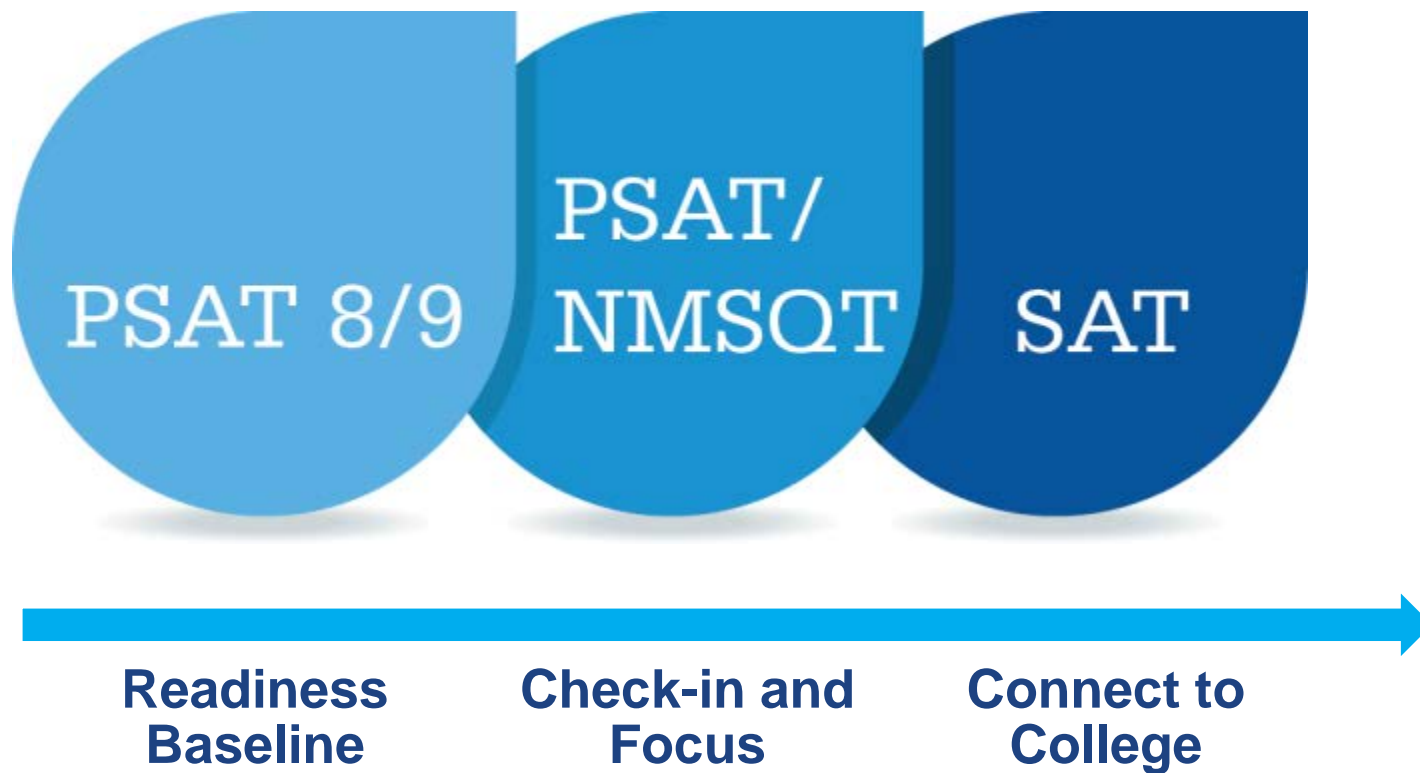
- + Read, analyze, and use reasoning to comprehend challenging literary and informational texts, including texts on science and history/social studies topics, to demonstrate and expand their knowledge and understanding
- + Revise and edit extended texts across a range of academic and career-related subjects for expression of ideas and to show facility with a core set of grammar, usage, and punctuation conventions
- + Show command of a focused but powerful set of knowledge, skills, and understandings in math and apply that ability to solve problems situated in science, social studies, and career-related contexts
- + Make careful and considered use of evidence as they read and write
- + Demonstrate skill in analyzing data, including data represented graphically in tables, graphs, charts, and the like, in reading, writing, and math contexts
- + Reveal an understanding of relevant words in context and how word choice helps shape meaning and tone.

Creating a Robust and Durable Bond Between Assessment and Instruction

The **alignment** of the **Texas standards** and the **SAT Suite of Assessments** is **strong**.

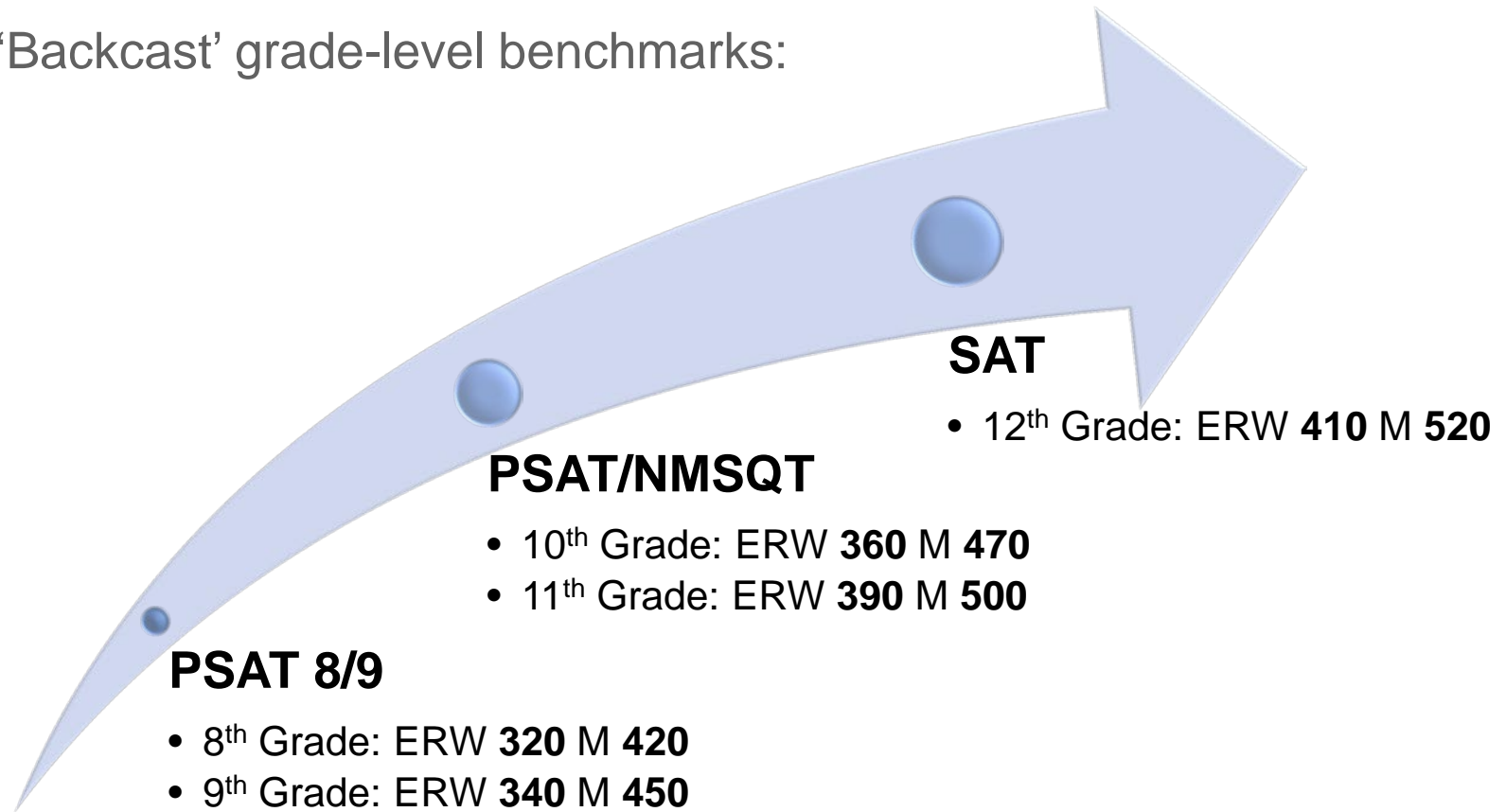
- + Both have been designed to promote in a clear and transparent way the goal of college and career readiness and success for all students
- + Both are grounded in evidence about essential postsecondary requirements.

The SAT[®] Suite of Assessments



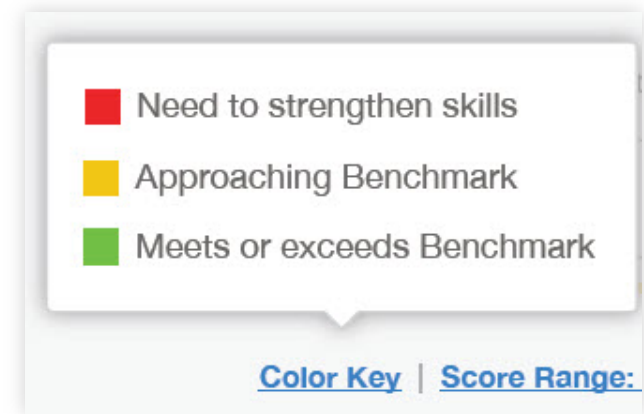
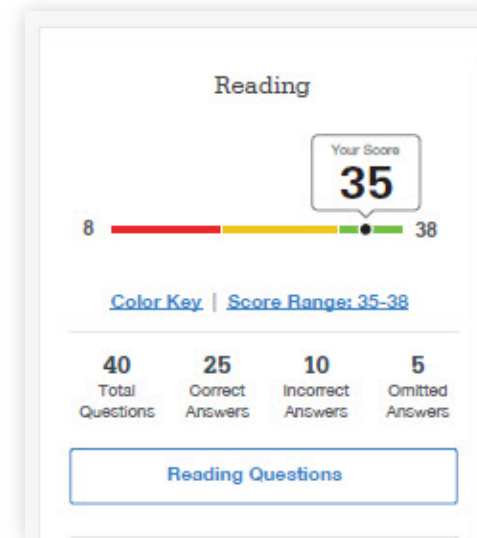
SAT[®] College and Career Readiness Benchmarks

- + 75% likelihood of achieving a course grade of C or better
- + Set at Section Level
- + 'Backcast' grade-level benchmarks:



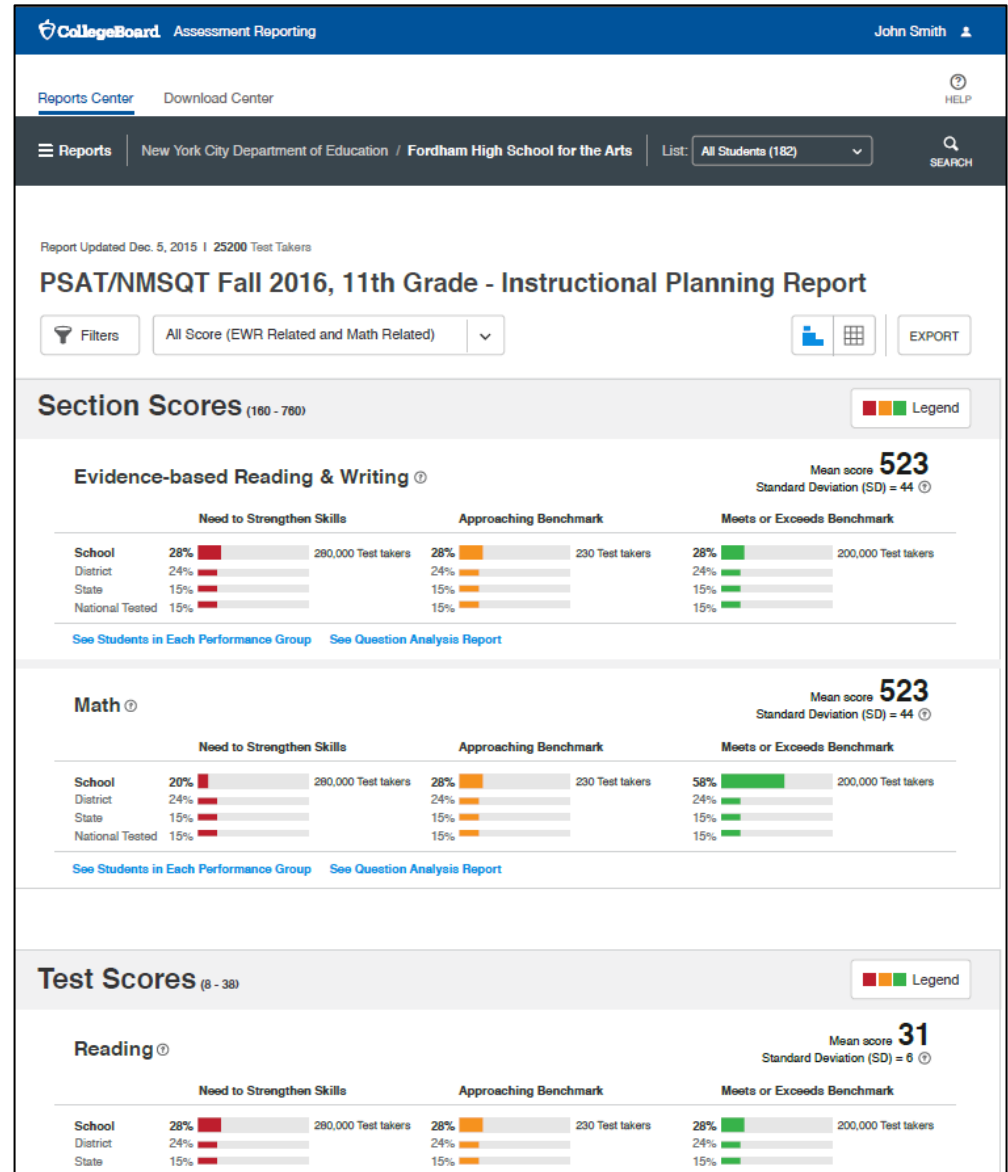
Empowering Students with Better Information: College Readiness Benchmarks

- + Section, test, and subscores all report scores in performance zones which indicate whether you are on track for success in the first year of college.
- + For section scores
 - **Need to Strengthen Skills** = below grade-level benchmark by more than one year
 - **Approaching Benchmark** = below grade-level benchmark by one year or less
 - **Meets or exceeds Benchmark** = at or above grade-level benchmark
- + For test scores and subscores,
 - Red, yellow, and green ranges reflect areas of strengths and weaknesses compared to the typical performance of students



Empowering Educators with Better Information: Instructional Planning

- + Provides breakout of student performance, in each Section, Test, and Subscores
- + At school-level, ability to see student in each performance group
- + Drill-thru to Question Analysis report



Empowering Educators with Better Information: Linking to State Standards

- + See your state standards for Subscores
- + Links to State Standards are provided anywhere a Subscore is reported

CollegeBoard Assessment Reporting

Reports Center Download Center

Standards Alignment

Evidence-Based Reading & Writing

- Words in Context
- Command of Evidence
- Expression of Ideas
- Standard English Conventions
- Additional Standards in Evidence-based Reading and Writing

Math

- Heart of Algebra**
- Passport to Advanced Math
- Problem Solving and Data Analysis
- Additional Standards in Math

Cross Test Scores

- Analysis in Science
- Analysis in History / Social Science

Heart of Algebra

Linear equations and functions in mathematics.

Standards in this subscore:

HSA.SSE.A.1	HSA.APR.B.3	HSA.CED.A.2
HSA.SSE.A.2	HSA.APR.C.4	HSA.CED.A.3
HSA.SSE.B.3	HSA.APR.C.5	HSA.CED.A.4
HSA.SSE.B.4	HSA.APR.D.6	HSA.REI.A.1
HSA.APR.D.7	HSA.REI.A.2	HSA.REI.C.8
HSA.APR.B.2	HSA.CED.A.1	HSA.REI.B.3

Heart of Algebra

Linear equations and functions in mathematics.

Related Standards:

HSA.SSE.A.1	HSA.APR.C.4	HSA.REI.C.7
HSA.SSE.A.2	HSA.APR.C.5	HSA.REI.C.8
HSA.SSE.B.3	HSA.APR.D.6	HSA.REI.C.9
HSA.SSE.B.4	HSA.APR.D.7	HSA.REI.D.10
HSA.APR.A.1	HSA.CED.A.1	HSA.REI.D.11
HSA.APR.B.2	HSA.CED.A.2	HSA.REI.D.12
HSA.APR.B.3	HSA.CED.A.3	

[See Standards](#)

Heart of Algebra

	Need to Strengthen Skills	Approach
Your District	10%	28%
State	24%	24%
Nation	15%	15%

[See Students in Each Performance Group](#)

HSA.SSE.A.1

Interpret expressions that represent a quantity in terms of its context.

HSA.SSE.A.1.A

Interpret parts of an expression, such as terms, factors, and coefficients.

HSA.SSE.A.1.B

Interpret complicated expressions by viewing one or more of their parts as a single entity. For example, interpret $P(1+r)^n$ as the product of P and a factor not depending on P .

HSA.SSE.A.2

Use the structure of an expression to identify ways to rewrite it. For example, see $x^4 - y^4$ as $(x^2)^2 - (y^2)^2$, thus recognizing it as a difference of squares that can be factored as $(x^2 - y^2)(x^2 + y^2)$.

HSA.SSE.B.3

Choose and produce an equivalent form of an expression to reveal and explain properties of the quantity

FREE Personalized SAT Practice through Khan Academy



**Jeff's Path
to SAT Success**

1



2



3

