

<b>Campus Domain 1 Grade before RI</b>				
<b>pd1_grade</b>	<b>Frequency</b>	<b>Percent</b>	<b>Cumulative Frequency</b>	<b>Cumulative Percent</b>
<b>A</b>	744	9.91	744	9.91
<b>B</b>	2325	30.95	3069	40.86
<b>C</b>	3372	44.89	6441	85.75
<b>D</b>	684	9.11	7125	94.86
<b>F</b>	386	5.14	7511	100.00
<b>Frequency Missing = 38</b>				

<b>Campus Domain 1 Grade after RI</b>				
<b>d1_grade</b>	<b>Frequency</b>	<b>Percent</b>	<b>Cumulative Frequency</b>	<b>Cumulative Percent</b>
<b>A</b>	744	9.91	744	9.91
<b>B</b>	2325	30.95	3069	40.86
<b>C</b>	3469	46.19	6538	87.05
<b>D</b>	607	8.08	7145	95.13
<b>F</b>	366	4.87	7511	100.00
<b>Frequency Missing = 38</b>				

<b>Campus Domain 1 RI on track to close gap in 5 years</b>				
<b>d1grow_bonus</b>	<b>Frequency</b>	<b>Percent</b>	<b>Cumulative Frequency</b>	<b>Cumulative Percent</b>
<b>0</b>	5002	66.26	5002	66.26
<b>1</b>	2547	33.74	7549	100.00

Table of d1grow_bonus by pd1_grade						
d1grow_bonus(Campus Domain 1 RI on track to close gap in 5 years)	pd1_grade(Campus Domain 1 Grade before RI)					
Frequency Percent Row Pct Col Pct	A	B	C	D	F	Total
<b>0</b>	200 2.66 4.03 26.88	1294 17.23 26.07 55.66	2517 33.51 50.71 74.64	587 7.82 11.83 85.82	366 4.87 7.37 94.82	4964 66.09
<b>1</b>	544 7.24 21.36 73.12	1031 13.73 40.48 44.34	855 11.38 33.57 25.36	97 1.29 3.81 14.18	20 0.27 0.79 5.18	2547 33.91
<b>Total</b>	744 9.91	2325 30.95	3372 44.89	684 9.11	386 5.14	7511 100.00
<b>Frequency Missing = 38</b>						

# Domain Modelling

<b>Campus Domain 1 Grade after RI</b>				
<b>d1_grade</b>	<b>Frequency</b>	<b>Percent</b>	<b>Cumulative Frequency</b>	<b>Cumulative Percent</b>
<b>A</b>	430	10.03	430	10.03
<b>B</b>	1325	30.90	1755	40.93
<b>C</b>	2026	47.25	3781	88.18
<b>D</b>	297	6.93	4078	95.10
<b>F</b>	210	4.90	4288	100.00
<b>Frequency Missing = 12</b>				

<b>Campus Domain 1 RI on track to close gap in 5 years</b>				
<b>d1grow_bonus</b>	<b>Frequency</b>	<b>Percent</b>	<b>Cumulative Frequency</b>	<b>Cumulative Percent</b>
<b>0</b>	2594	60.33	2594	60.33
<b>1</b>	1706	39.67	4300	100.00

# Domain Modelling

Campus Domain 1 Grade after RI				
d1_grade	Frequency	Percent	Cumulative Frequency	Cumulative Percent
A	157	9.58	157	9.58
B	497	30.34	654	39.93
C	747	45.60	1401	85.53
D	163	9.95	1564	95.48
F	74	4.52	1638	100.00
Frequency Missing = 1				

Campus Domain 1 RI on track to close gap in 5 years				
d1grow_bonus	Frequency	Percent	Cumulative Frequency	Cumulative Percent
0	1185	72.30	1185	72.30
1	454	27.70	1639	100.00

## Domain Modelling

Draft for Discussion\_09/26- 27/2016

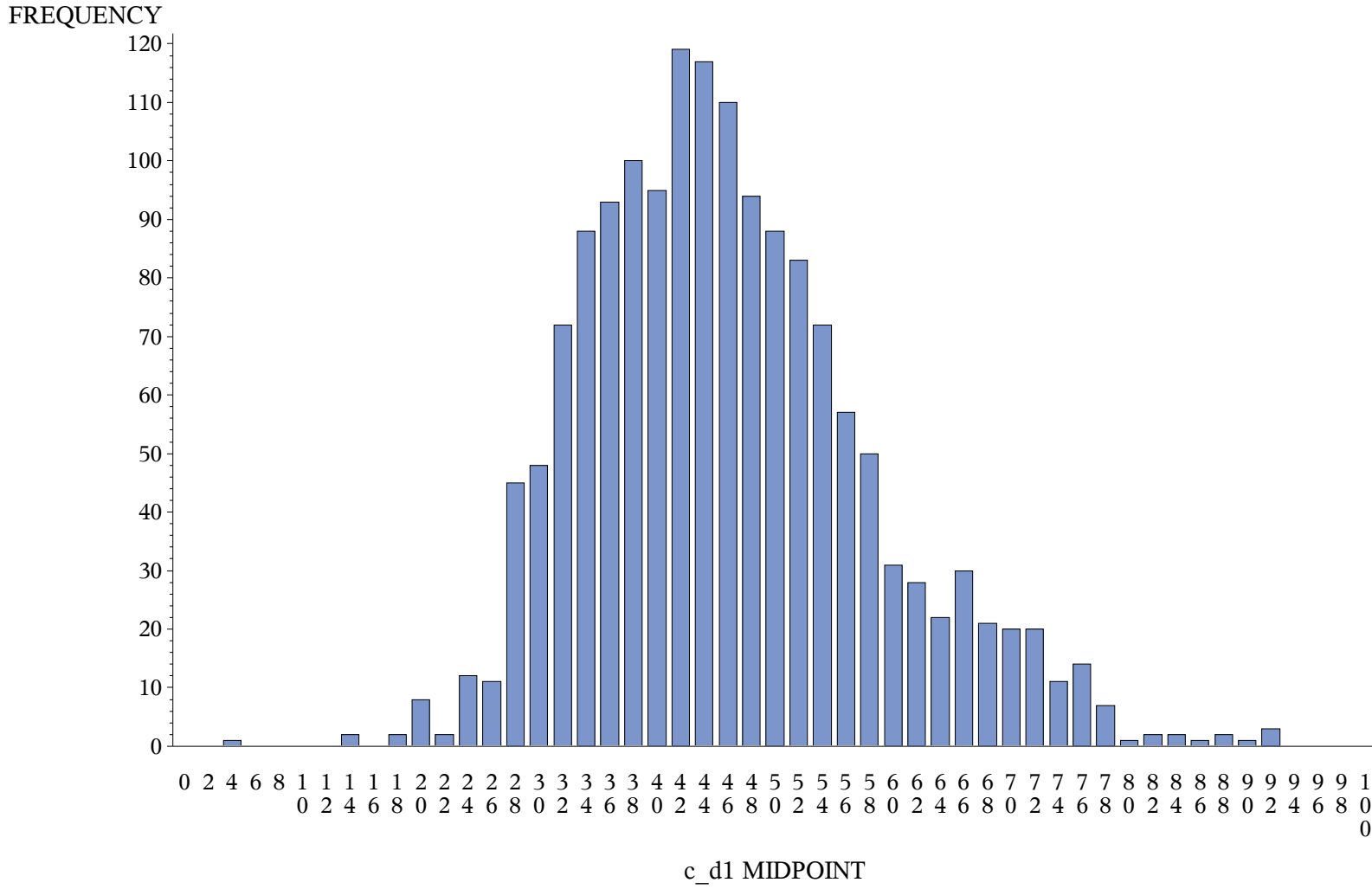
<b>Campus Domain 1 Grade after RI</b>				
<b>d1_grade</b>	<b>Frequency</b>	<b>Percent</b>	<b>Cumulative Frequency</b>	<b>Cumulative Percent</b>
<b>A</b>	157	9.91	157	9.91
<b>B</b>	503	31.74	660	41.64
<b>C</b>	696	43.91	1356	85.55
<b>D</b>	147	9.27	1503	94.83
<b>F</b>	82	5.17	1585	100.00
<b>Frequency Missing = 25</b>				

<b>Campus Domain 1 RI on track to close gap in 5 years</b>				
<b>d1grow_bonus</b>	<b>Frequency</b>	<b>Percent</b>	<b>Cumulative Frequency</b>	<b>Cumulative Percent</b>
<b>0</b>	1223	75.96	1223	75.96
<b>1</b>	387	24.04	1610	100.00

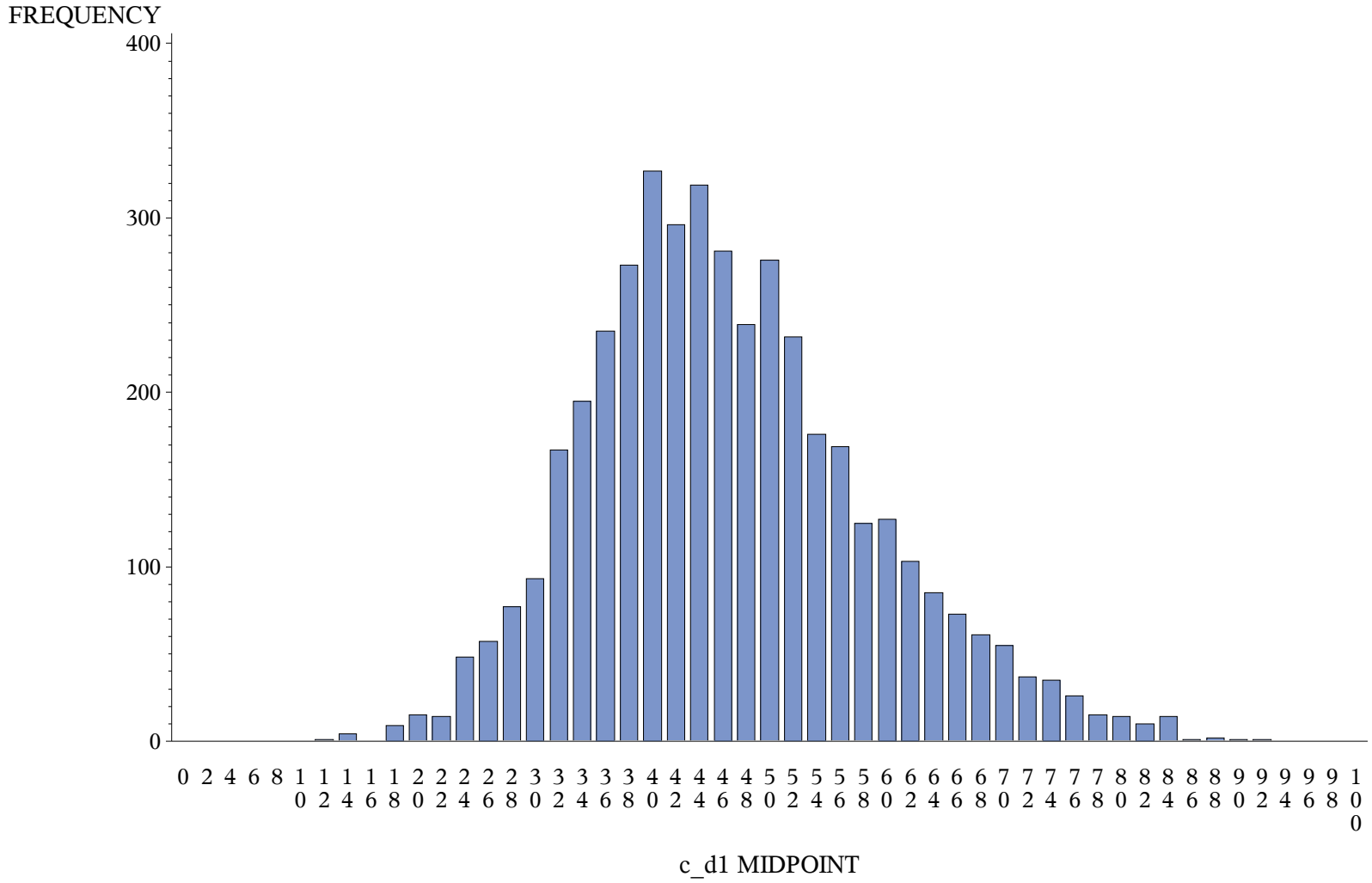
# Domain Modelling

## Distribution Secondary-Both (1, 2, 3)

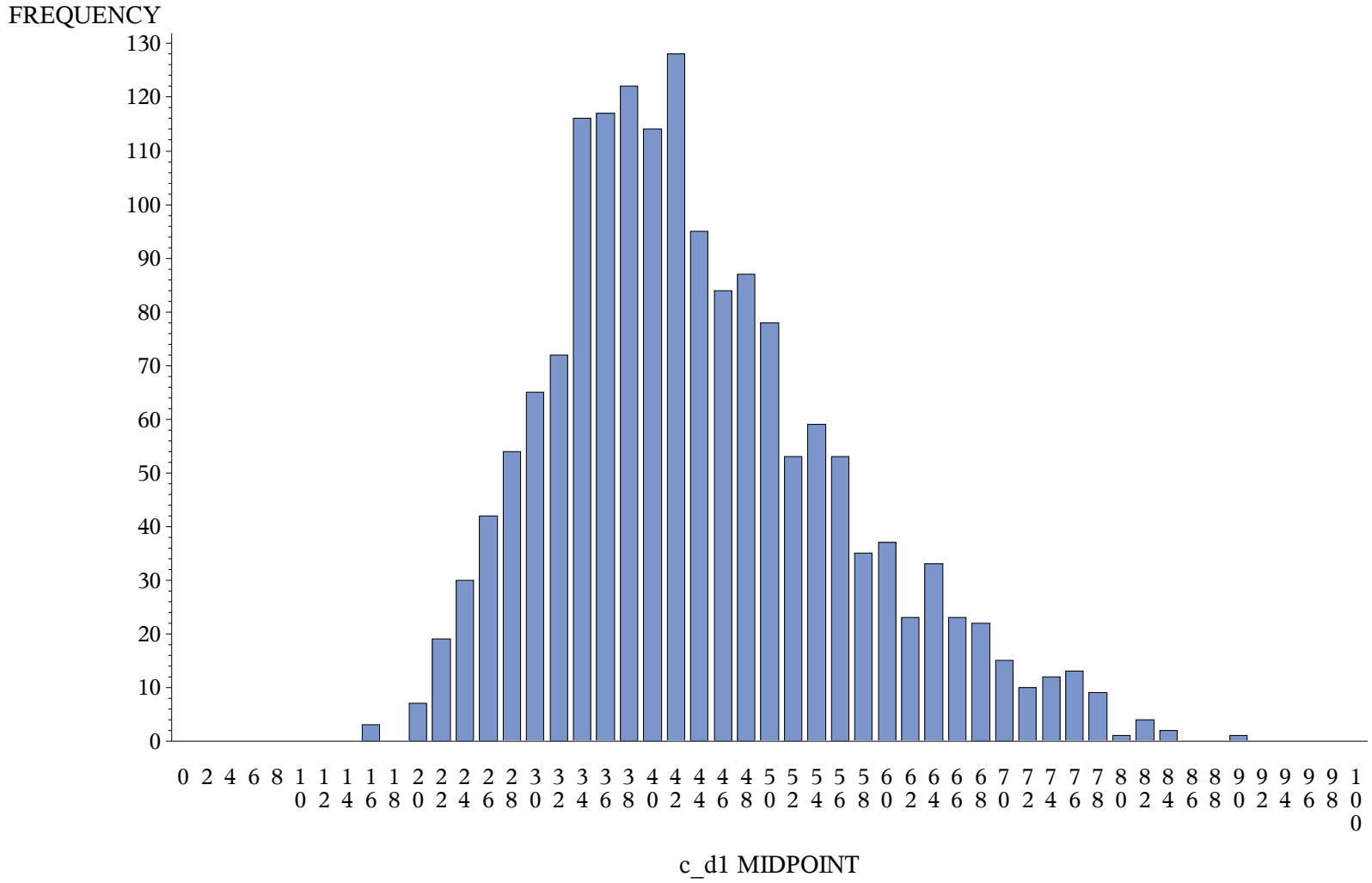
Draft for Discussion\_09/26- 27/2016



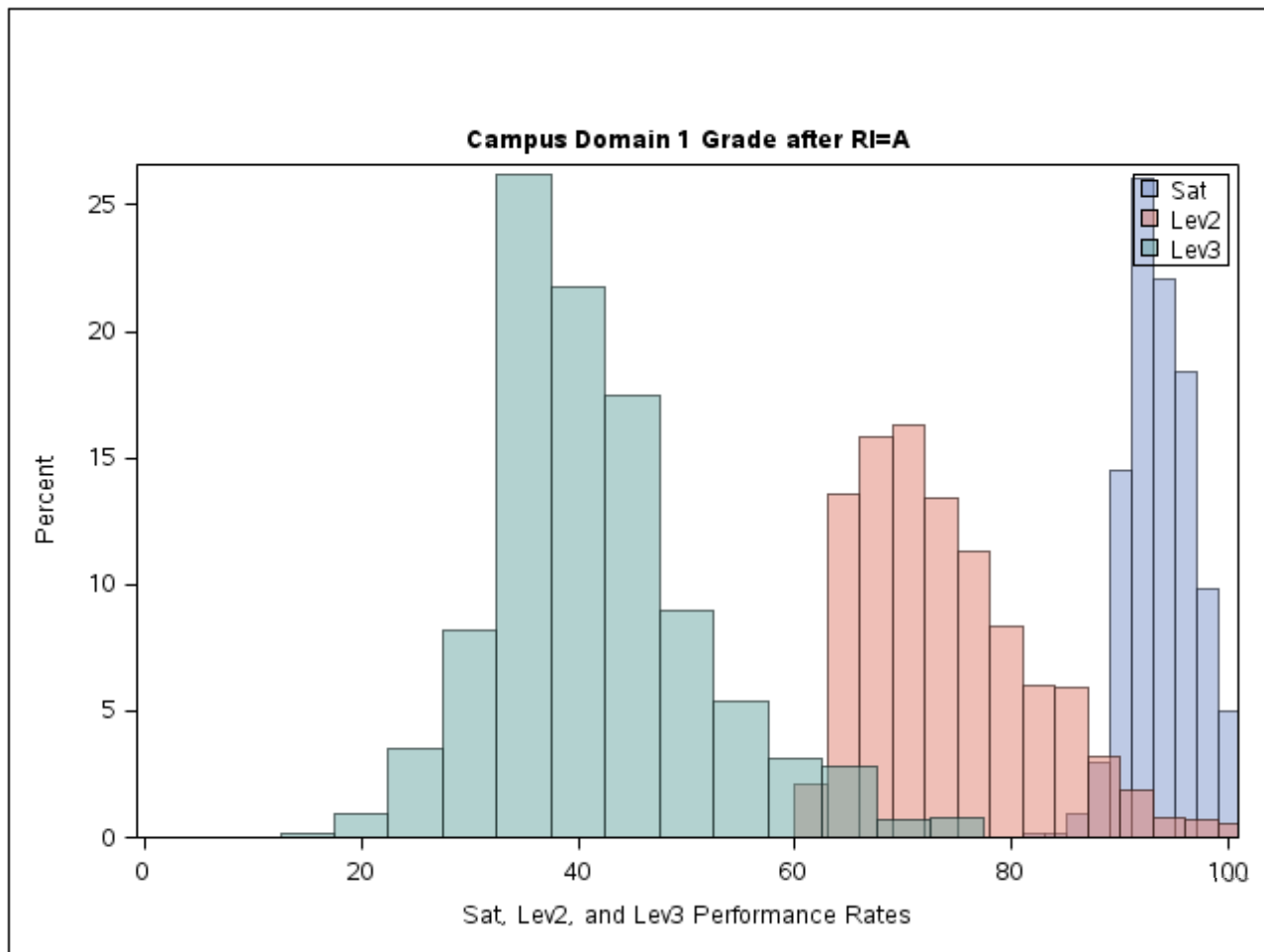
### Distribution Elementary (1, 2, 3)

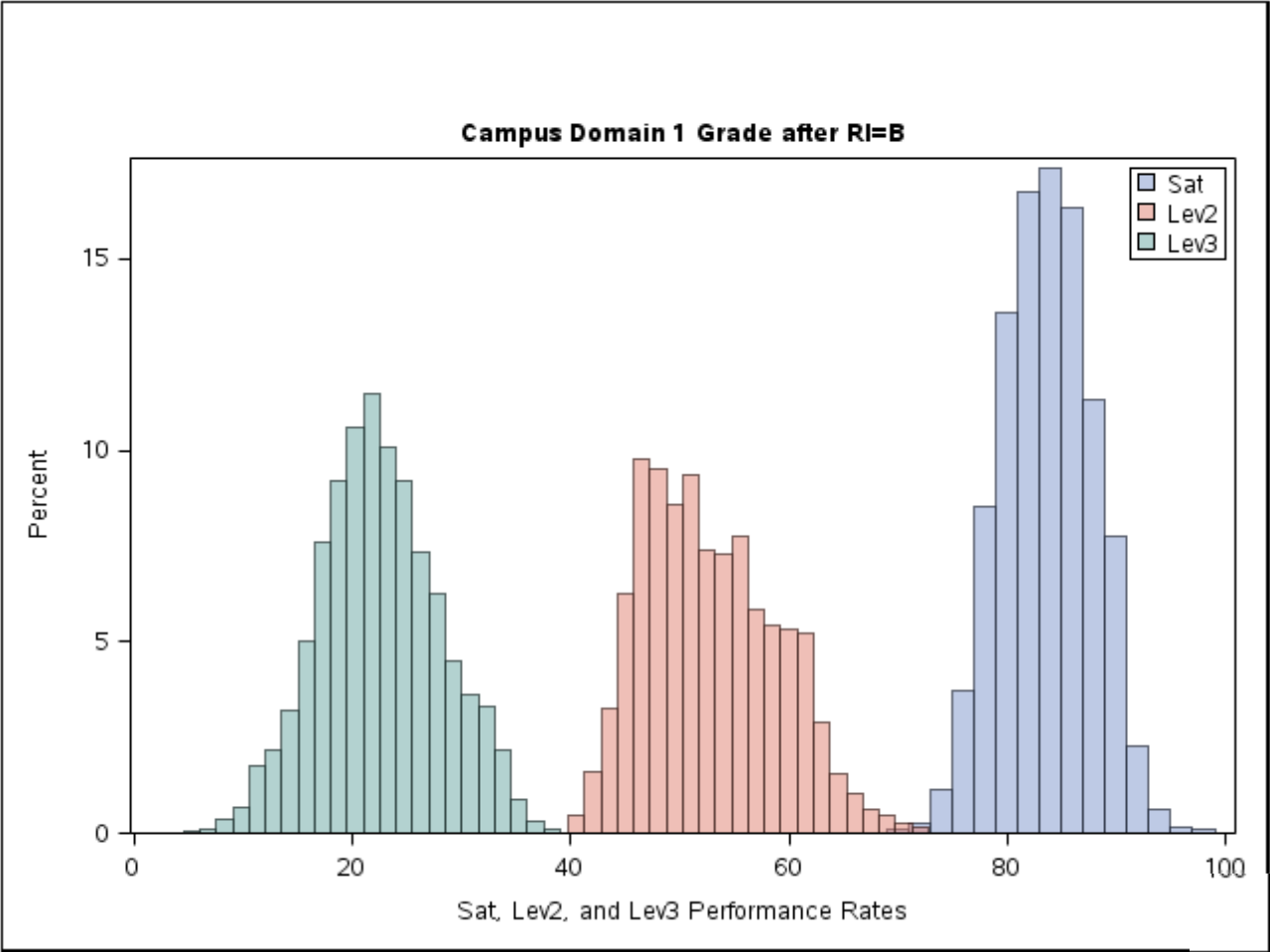


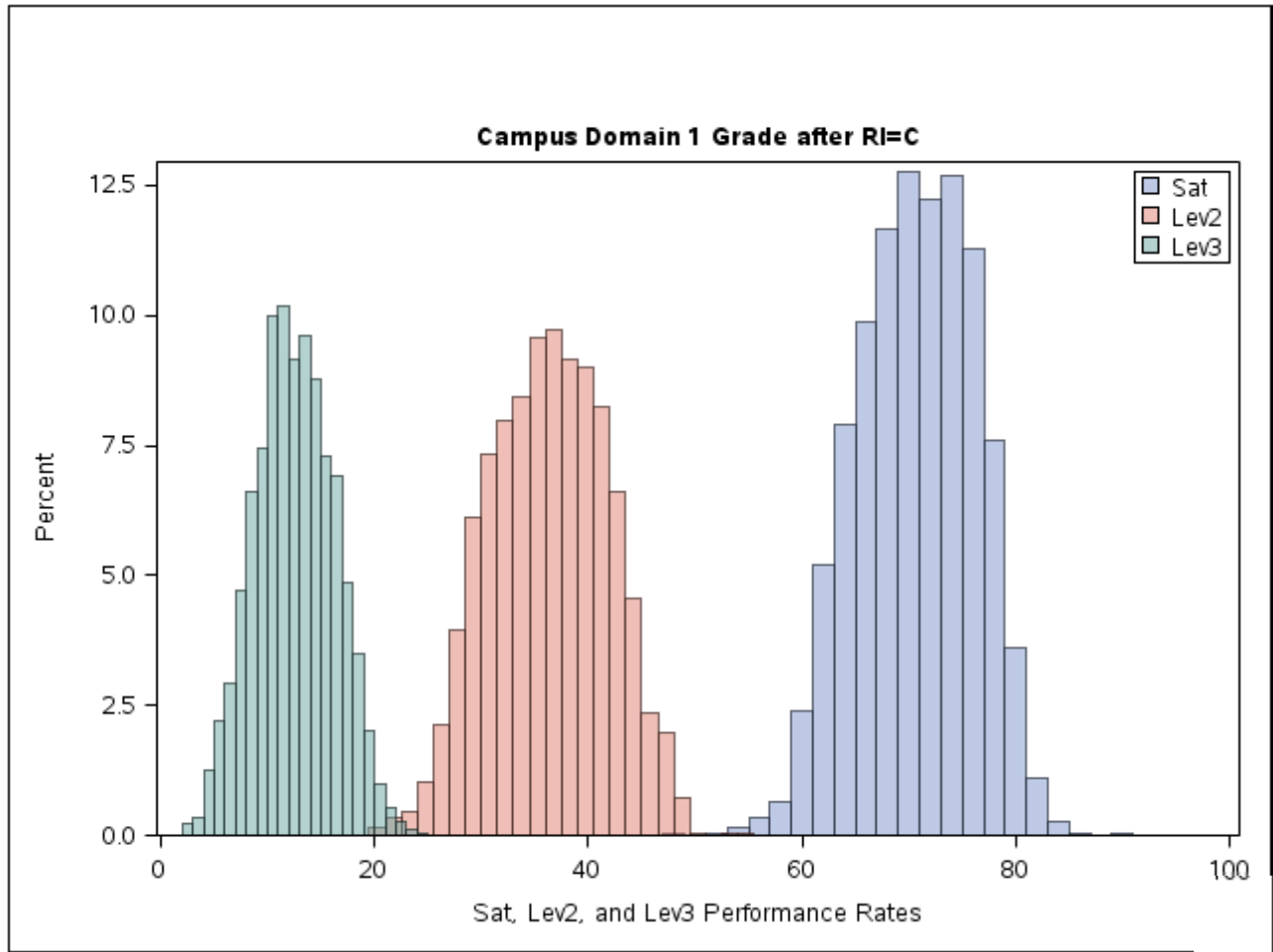
### Distribution Middle School (1, 2, 3)

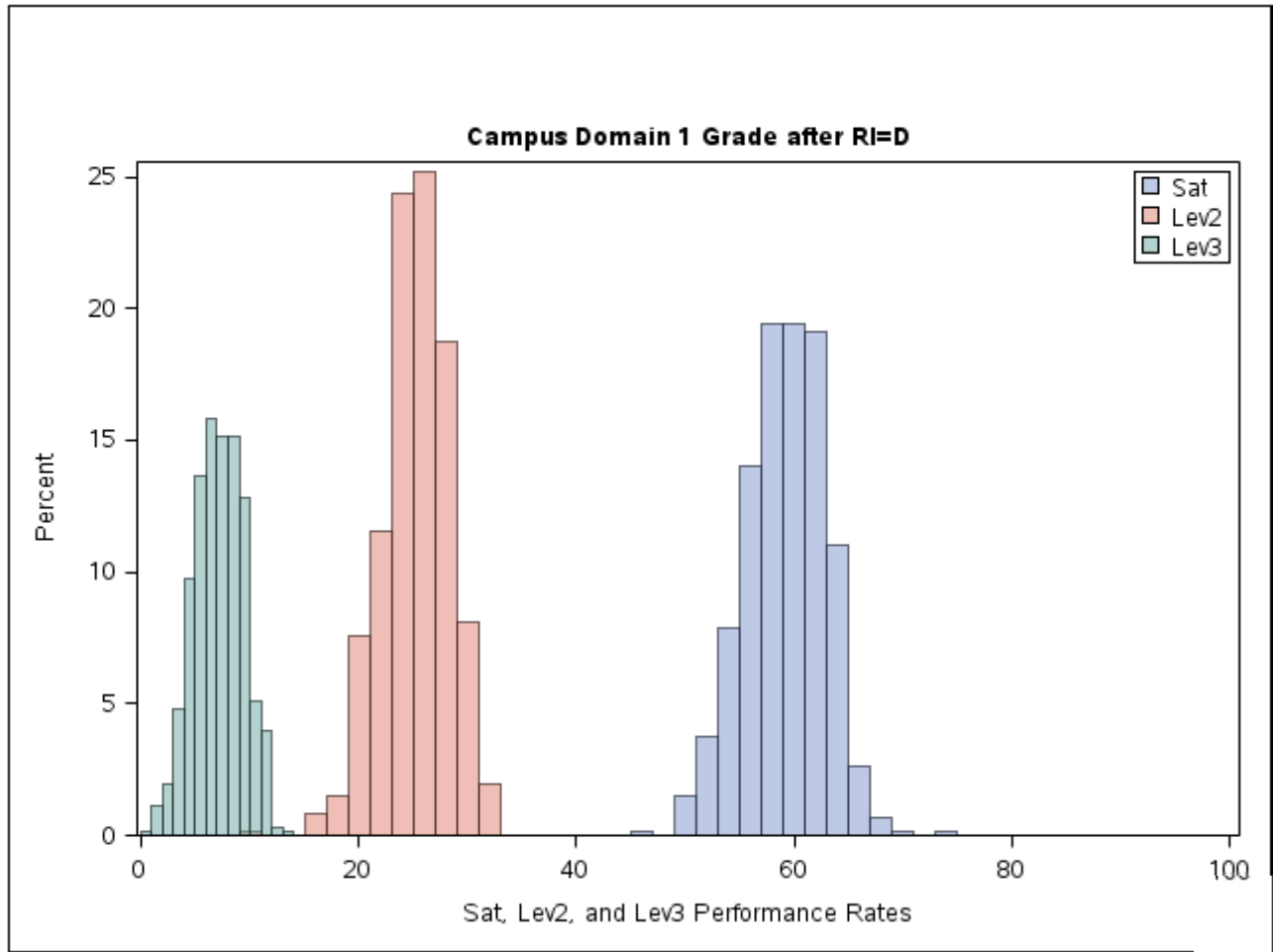


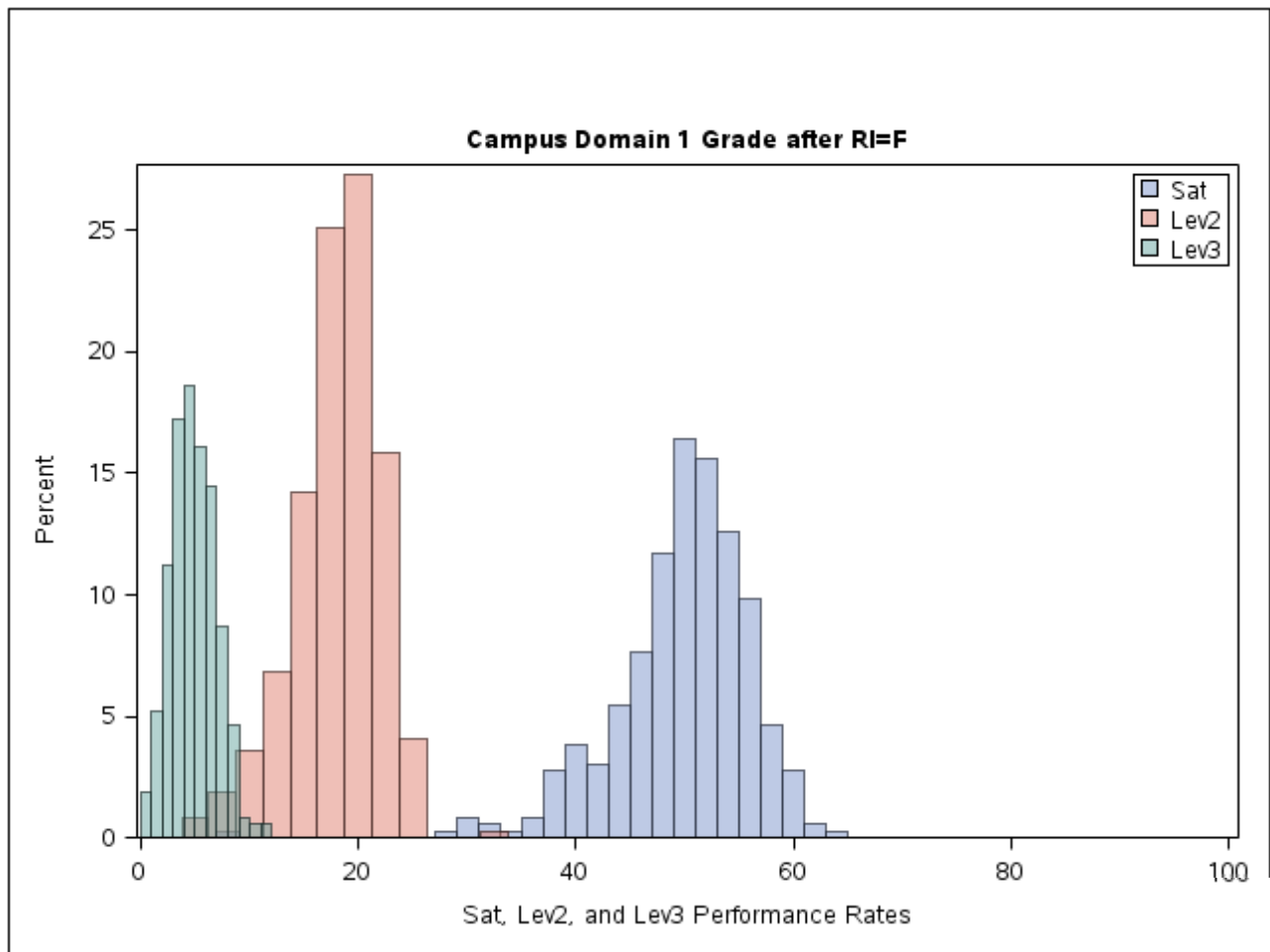












<b>Campus Domain 3 Grade before RI</b>				
<b>pd3_grade</b>	<b>Frequency</b>	<b>Percent</b>	<b>Cumulative Frequency</b>	<b>Cumulative Percent</b>
<b>A</b>	730	9.81	730	9.81
<b>B</b>	2150	28.89	2880	38.70
<b>C</b>	3434	46.14	6314	84.84
<b>D</b>	739	9.93	7053	94.77
<b>F</b>	389	5.23	7442	100.00
<b>Frequency Missing = 107</b>				

<b>Campus Domain 3 Grade after RI</b>				
<b>d3_grade</b>	<b>Frequency</b>	<b>Percent</b>	<b>Cumulative Frequency</b>	<b>Cumulative Percent</b>
<b>A</b>	730	9.81	730	9.81
<b>B</b>	2150	28.89	2880	38.70
<b>C</b>	3491	46.91	6371	85.61
<b>D</b>	688	9.24	7059	94.85
<b>F</b>	383	5.15	7442	100.00
<b>Frequency Missing = 107</b>				

Campus Domain 3 RI on track to close gap in 5 years				
d3grow_bonus	Frequency	Percent	Cumulative Frequency	Cumulative Percent
0	4337	57.45	4337	57.45
1	3212	42.55	7549	100.00

Table of d3grow_bonus by pd3_grade						
d3grow_bonus(Campus Domain 3 RI on track to close gap in 5 years)	pd3_grade(Campus Domain 3 Grade before RI)					
Frequency Percent Row Pct Col Pct	A	B	C	D	F	Total
0	101 1.36 2.33 13.84	766 10.29 17.66 35.63	2405 32.32 55.45 70.03	682 9.16 15.73 92.29	383 5.15 8.83 98.46	4337 58.28
1	629 8.45 20.26 86.16	1384 18.60 44.57 64.37	1029 13.83 33.14 29.97	57 0.77 1.84 7.71	6 0.08 0.19 1.54	3105 41.72
<b>Total</b>	730 9.81	2150 28.89	3434 46.14	739 9.93	389 5.23	7442 100.00
<b>Frequency Missing = 107</b>						

Table of rank_gavgcompgrp by pd3_grade						
rank_gavgcompgrp(Campus Domain 3 Score(gap avg) comparison group quartile ranking Final Level II - all tests)	pd3_grade(Campus Domain 3 Grade before RI)					
Frequency Percent Row Pct Col Pct	A	B	C	D	F	Total
<b>Q1</b>	141 2.11 8.26 100.00	1252 18.70 73.39 62.76	313 4.68 18.35 9.12	0 0.00 0.00 0.00	0 0.00 0.00 0.00	1706 25.49
<b>Q2</b>	0 0.00 0.00 0.00	562 8.40 34.84 28.17	1040 15.54 64.48 30.31	11 0.16 0.68 1.49	0 0.00 0.00 0.00	1613 24.10
<b>Q3</b>	0 0.00 0.00 0.00	150 2.24 8.99 7.52	1342 20.05 80.46 39.11	161 2.41 9.65 21.82	15 0.22 0.90 3.86	1668 24.92
<b>Q4</b>	0 0.00 0.00 0.00	31 0.46 1.82 1.55	736 10.99 43.12 21.45	566 8.46 33.16 76.69	374 5.59 21.91 96.14	1707 25.50
<b>Total</b>	141 2.11	1995 29.80	3431 51.25	738 11.02	389 5.81	6694 100.00
<b>Frequency Missing = 855</b>						



<b>Campus Domain 3 Grade before RI</b>				
<b>pd3_grade</b>	<b>Frequency</b>	<b>Percent</b>	<b>Cumulative Frequency</b>	<b>Cumulative Percent</b>
<b>A</b>	410	9.67	410	9.67
<b>B</b>	1262	29.78	1672	39.45
<b>C</b>	1916	45.21	3588	84.66
<b>D</b>	412	9.72	4000	94.38
<b>F</b>	238	5.62	4238	100.00
<b>Frequency Missing = 62</b>				

<b>Campus Domain 3 Grade after RI</b>				
<b>d3_grade</b>	<b>Frequency</b>	<b>Percent</b>	<b>Cumulative Frequency</b>	<b>Cumulative Percent</b>
<b>A</b>	410	9.67	410	9.67
<b>B</b>	1262	29.78	1672	39.45
<b>C</b>	1960	46.25	3632	85.70
<b>D</b>	372	8.78	4004	94.48
<b>F</b>	234	5.52	4238	100.00
<b>Frequency Missing = 62</b>				

<b>Campus Domain 3 Grade before RI</b>				
<b>pd3_grade</b>	<b>Frequency</b>	<b>Percent</b>	<b>Cumulative Frequency</b>	<b>Cumulative Percent</b>
<b>A</b>	157	9.60	157	9.60
<b>B</b>	452	27.63	609	37.22
<b>C</b>	782	47.80	1391	85.02
<b>D</b>	169	10.33	1560	95.35
<b>F</b>	76	4.65	1636	100.00
<b>Frequency Missing = 3</b>				

<b>Campus Domain 3 Grade after RI</b>				
<b>d3_grade</b>	<b>Frequency</b>	<b>Percent</b>	<b>Cumulative Frequency</b>	<b>Cumulative Percent</b>
<b>A</b>	157	9.60	157	9.60
<b>B</b>	452	27.63	609	37.22
<b>C</b>	787	48.11	1396	85.33
<b>D</b>	166	10.15	1562	95.48
<b>F</b>	74	4.52	1636	100.00
<b>Frequency Missing = 3</b>				

<b>Campus Domain 3 Grade before RI</b>				
<b>pd3_grade</b>	<b>Frequency</b>	<b>Percent</b>	<b>Cumulative Frequency</b>	<b>Cumulative Percent</b>
<b>A</b>	163	10.40	163	10.40
<b>B</b>	436	27.81	599	38.20
<b>C</b>	736	46.94	1335	85.14
<b>D</b>	158	10.08	1493	95.22
<b>F</b>	75	4.78	1568	100.00
<b>Frequency Missing = 42</b>				

<b>Campus Domain 3 Grade after RI</b>				
<b>d3_grade</b>	<b>Frequency</b>	<b>Percent</b>	<b>Cumulative Frequency</b>	<b>Cumulative Percent</b>
<b>A</b>	163	10.40	163	10.40
<b>B</b>	436	27.81	599	38.20
<b>C</b>	744	47.45	1343	85.65
<b>D</b>	150	9.57	1493	95.22
<b>F</b>	75	4.78	1568	100.00
<b>Frequency Missing = 42</b>				

Table of d1_grade by d3_grade						
d1_grade(Campus Domain 1 Grade after RI)	d3_grade(Campus Domain 3 Grade after RI)					
Frequency Percent Row Pct Col Pct	A	B	C	D	F	Total
<b>A</b>	554 7.44 76.31 75.89	165 2.22 22.73 7.67	6 0.08 0.83 0.17	1 0.01 0.14 0.15	0 0.00 0.00 0.00	726 9.76
<b>B</b>	176 2.36 7.63 24.11	1571 21.11 68.10 73.07	554 7.44 24.01 15.87	6 0.08 0.26 0.87	0 0.00 0.00 0.00	2307 31.00
<b>C</b>	0 0.00 0.00 0.00	414 5.56 12.00 19.26	2694 36.20 78.09 77.17	302 4.06 8.75 43.90	40 0.54 1.16 10.44	3450 46.36
<b>D</b>	0 0.00 0.00 0.00	0 0.00 0.00 0.00	230 3.09 38.14 6.59	290 3.90 48.09 42.15	83 1.12 13.76 21.67	603 8.10
<b>F</b>	0 0.00 0.00 0.00	0 0.00 0.00 0.00	7 0.09 1.97 0.20	89 1.20 25.00 12.94	260 3.49 73.03 67.89	356 4.78
<b>Total</b>	730 9.81	2150 28.89	3491 46.91	688 9.24	383 5.15	7442 100.00
<b>Frequency Missing = 107</b>						

Table of d1_grade by d3_grade						
d1_grade(Campus Domain 1 Grade after RI)	d3_grade(Campus Domain 3 Grade after RI)					
Frequency Percent Row Pct Col Pct	A	B	C	D	F	Total
<b>A</b>	306 7.22 73.38 74.63	105 2.48 25.18 8.32	5 0.12 1.20 0.26	1 0.02 0.24 0.27	0 0.00 0.00 0.00	417 9.84
<b>B</b>	104 2.45 7.91 25.37	889 20.98 67.60 70.44	317 7.48 24.11 16.17	5 0.12 0.38 1.34	0 0.00 0.00 0.00	1315 31.03
<b>C</b>	0 0.00 0.00 0.00	268 6.32 13.34 21.24	1543 36.41 76.80 78.72	172 4.06 8.56 46.24	26 0.61 1.29 11.11	2009 47.40
<b>D</b>	0 0.00 0.00 0.00	0 0.00 0.00 0.00	91 2.15 30.85 4.64	153 3.61 51.86 41.13	51 1.20 17.29 21.79	295 6.96
<b>F</b>	0 0.00 0.00 0.00	0 0.00 0.00 0.00	4 0.09 1.98 0.20	41 0.97 20.30 11.02	157 3.70 77.72 67.09	202 4.77
<b>Total</b>	410 9.67	1262 29.78	1960 46.25	372 8.78	234 5.52	4238 100.00
<b>Frequency Missing = 62</b>						

Table of d1_grade by d3_grade						
d1_grade(Campus Domain 1 Grade after RI)	d3_grade(Campus Domain 3 Grade after RI)					
Frequency Percent Row Pct Col Pct	A	B	C	D	F	Total
<b>A</b>	122 7.46 78.71 77.71	32 1.96 20.65 7.08	1 0.06 0.65 0.13	0 0.00 0.00 0.00	0 0.00 0.00 0.00	155 9.47
<b>B</b>	35 2.14 7.04 22.29	343 20.97 69.01 75.88	119 7.27 23.94 15.12	0 0.00 0.00 0.00	0 0.00 0.00 0.00	497 30.38
<b>C</b>	0 0.00 0.00 0.00	77 4.71 10.31 17.04	600 36.67 80.32 76.24	64 3.91 8.57 38.55	6 0.37 0.80 8.11	747 45.66
<b>D</b>	0 0.00 0.00 0.00	0 0.00 0.00 0.00	67 4.10 41.10 8.51	80 4.89 49.08 48.19	16 0.98 9.82 21.62	163 9.96
<b>F</b>	0 0.00 0.00 0.00	0 0.00 0.00 0.00	0 0.00 0.00 0.00	22 1.34 29.73 13.25	52 3.18 70.27 70.27	74 4.52
<b>Total</b>	157 9.60	452 27.63	787 48.11	166 10.15	74 4.52	1636 100.00
<b>Frequency Missing = 3</b>						

Table of d1_grade by d3_grade						
d1_grade(Campus Domain 1 Grade after RI)	d3_grade(Campus Domain 3 Grade after RI)					
Frequency Percent Row Pct Col Pct	A	B	C	D	F	Total
<b>A</b>	126 8.04 81.82 77.30	28 1.79 18.18 6.42	0 0.00 0.00 0.00	0 0.00 0.00 0.00	0 0.00 0.00 0.00	154 9.82
<b>B</b>	37 2.36 7.47 22.70	339 21.62 68.48 77.75	118 7.53 23.84 15.86	1 0.06 0.20 0.67	0 0.00 0.00 0.00	495 31.57
<b>C</b>	0 0.00 0.00 0.00	69 4.40 9.94 15.83	551 35.14 79.39 74.06	66 4.21 9.51 44.00	8 0.51 1.15 10.67	694 44.26
<b>D</b>	0 0.00 0.00 0.00	0 0.00 0.00 0.00	72 4.59 49.66 9.68	57 3.64 39.31 38.00	16 1.02 11.03 21.33	145 9.25
<b>F</b>	0 0.00 0.00 0.00	0 0.00 0.00 0.00	3 0.19 3.75 0.40	26 1.66 32.50 17.33	51 3.25 63.75 68.00	80 5.10
<b>Total</b>	163 10.40	436 27.81	744 47.45	150 9.57	75 4.78	1568 100.00
<b>Frequency Missing = 42</b>						

<b>Campus Domain 3 RI on track to close gap in 5 years</b>				
<b>d3grow_bonus</b>	<b>Frequency</b>	<b>Percent</b>	<b>Cumulative Frequency</b>	<b>Cumulative Percent</b>
<b>0</b>	2412	56.09	2412	56.09
<b>1</b>	1888	43.91	4300	100.00

<b>Campus Domain 1 Grade before RI</b>				
<b>pd1_grade</b>	<b>Frequency</b>	<b>Percent</b>	<b>Cumulative Frequency</b>	<b>Cumulative Percent</b>
<b>A</b>	430	10.03	430	10.03
<b>B</b>	1325	30.90	1755	40.93
<b>C</b>	1961	45.73	3716	86.66
<b>D</b>	347	8.09	4063	94.75
<b>F</b>	225	5.25	4288	100.00
<b>Frequency Missing = 12</b>				



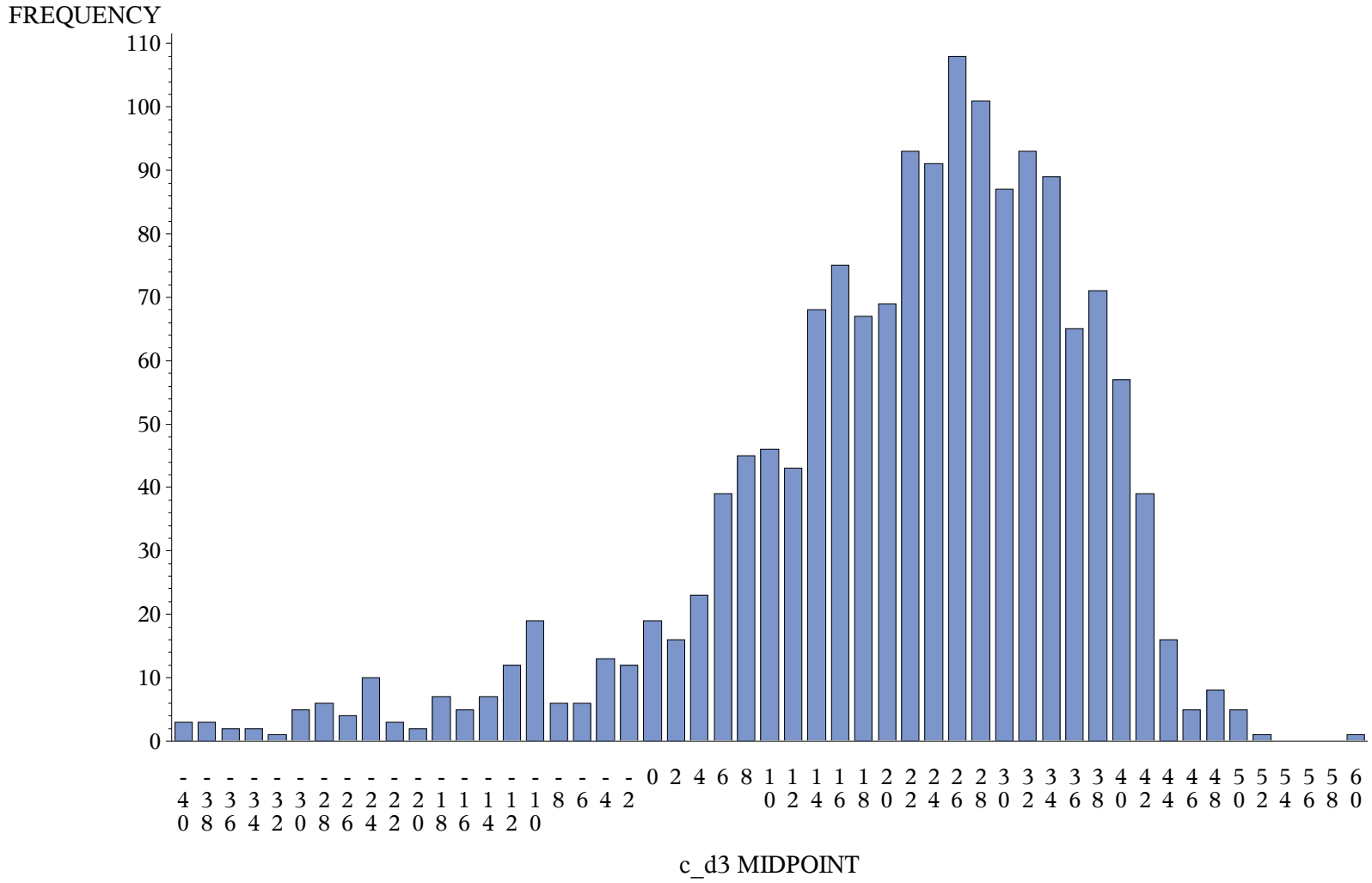
<b>Campus Domain 3 RI on track to close gap in 5 years</b>				
<b>d3grow_bonus</b>	<b>Frequency</b>	<b>Percent</b>	<b>Cumulative Frequency</b>	<b>Cumulative Percent</b>
<b>0</b>	934	56.99	934	56.99
<b>1</b>	705	43.01	1639	100.00

<b>Campus Domain 1 Grade before RI</b>				
<b>pd1_grade</b>	<b>Frequency</b>	<b>Percent</b>	<b>Cumulative Frequency</b>	<b>Cumulative Percent</b>
<b>A</b>	157	9.58	157	9.58
<b>B</b>	497	30.34	654	39.93
<b>C</b>	731	44.63	1385	84.55
<b>D</b>	175	10.68	1560	95.24
<b>F</b>	78	4.76	1638	100.00
<b>Frequency Missing = 1</b>				

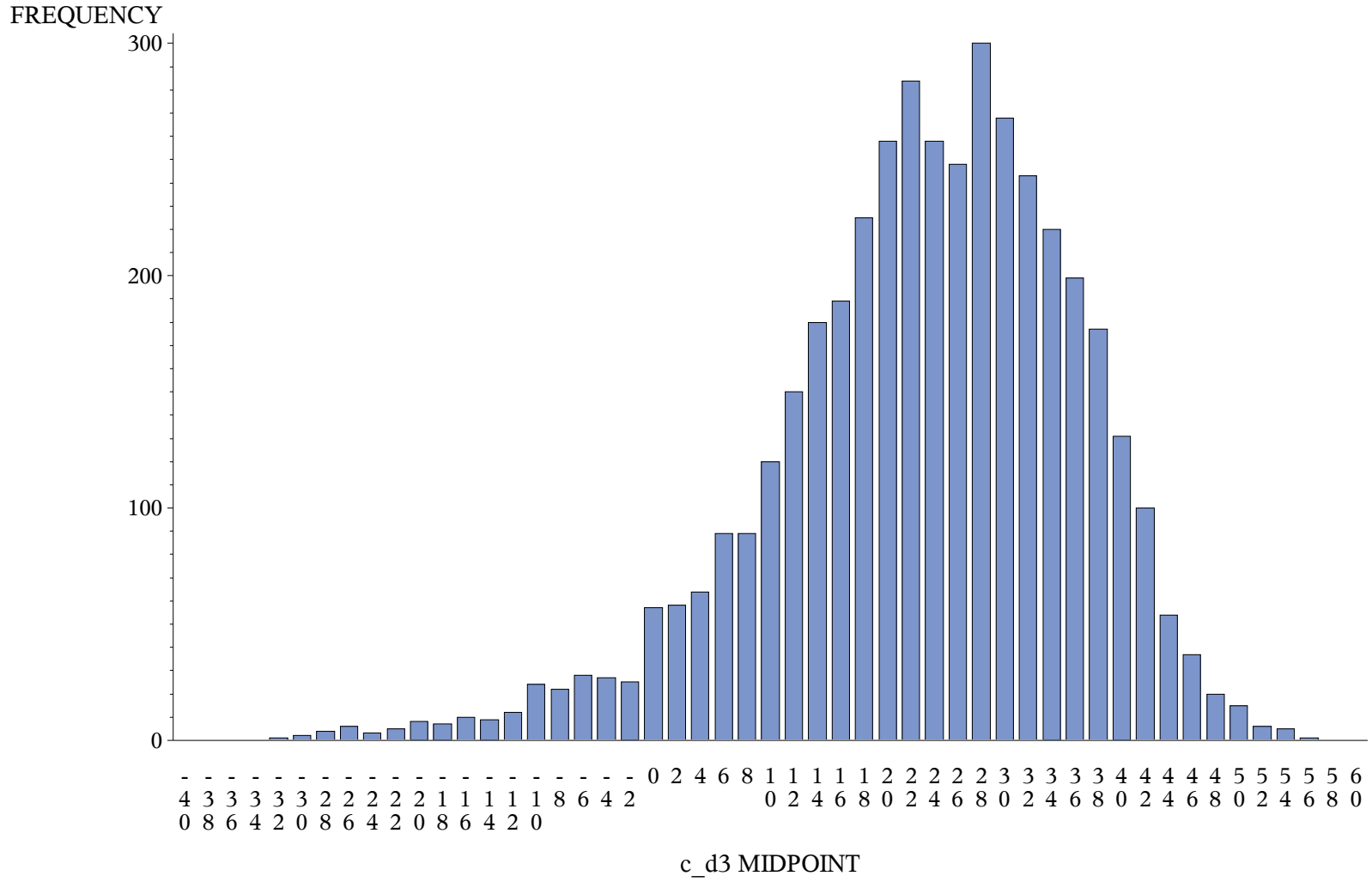
<b>Campus Domain 3 RI on track to close gap in 5 years</b>				
<b>d3grow_bonus</b>	<b>Frequency</b>	<b>Percent</b>	<b>Cumulative Frequency</b>	<b>Cumulative Percent</b>
<b>0</b>	991	61.55	991	61.55
<b>1</b>	619	38.45	1610	100.00

<b>Campus Domain 1 Grade before RI</b>				
<b>pd1_grade</b>	<b>Frequency</b>	<b>Percent</b>	<b>Cumulative Frequency</b>	<b>Cumulative Percent</b>
<b>A</b>	157	9.91	157	9.91
<b>B</b>	503	31.74	660	41.64
<b>C</b>	680	42.90	1340	84.54
<b>D</b>	162	10.22	1502	94.76
<b>F</b>	83	5.24	1585	100.00
<b>Frequency Missing = 25</b>				

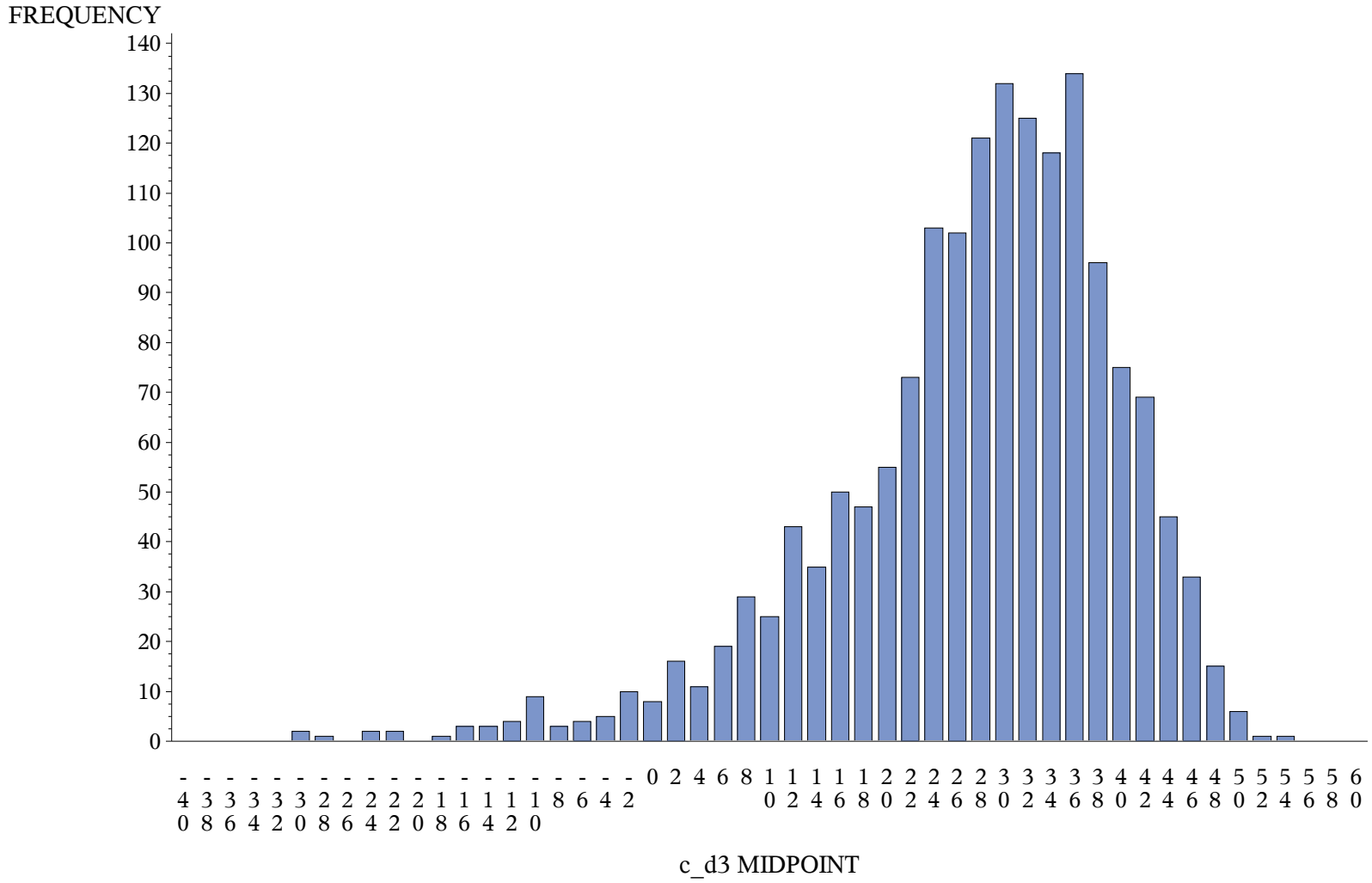
### Distribution Secondary-Both (Gap)



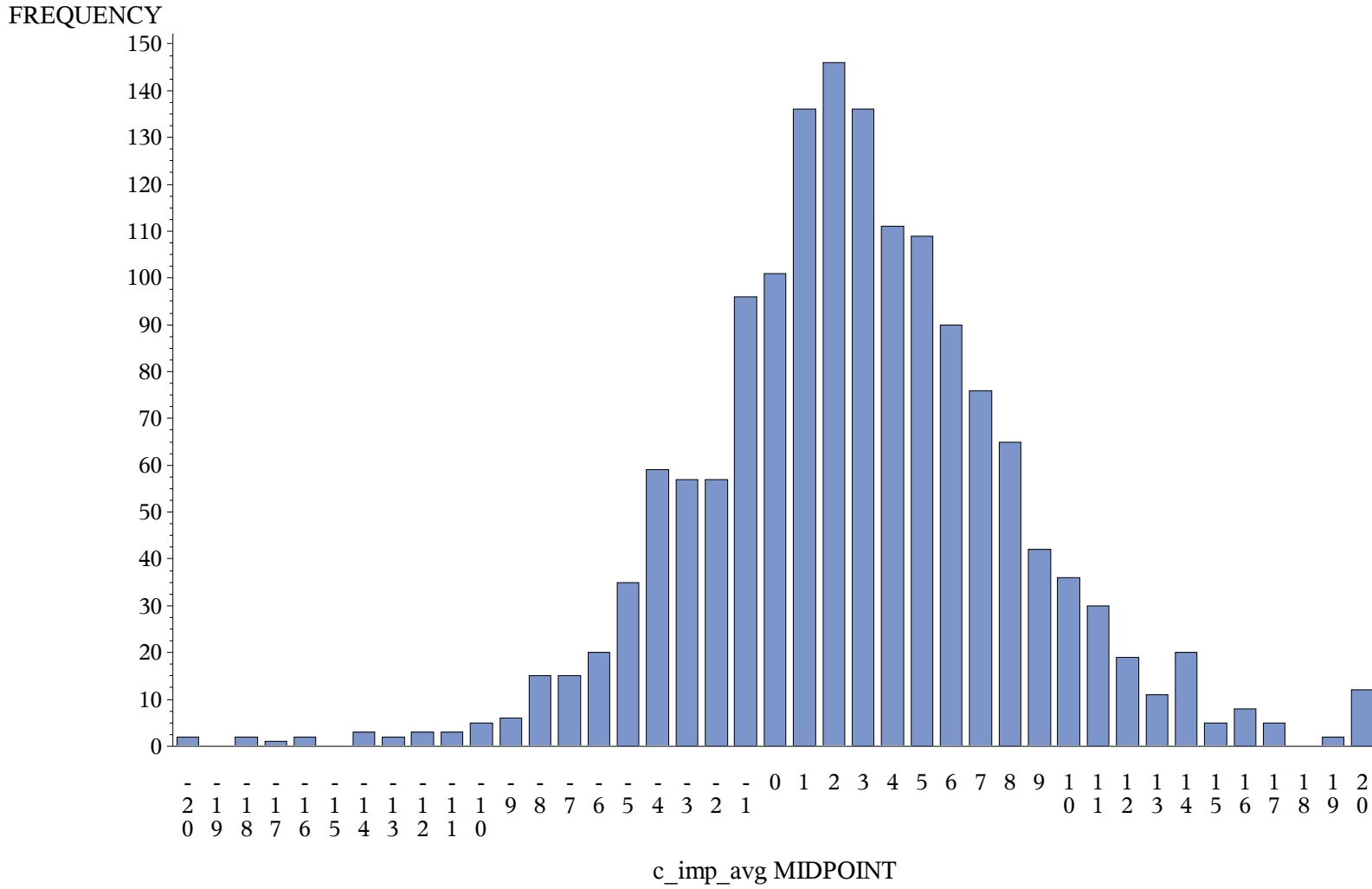
### Distribution Elementary (Gap)



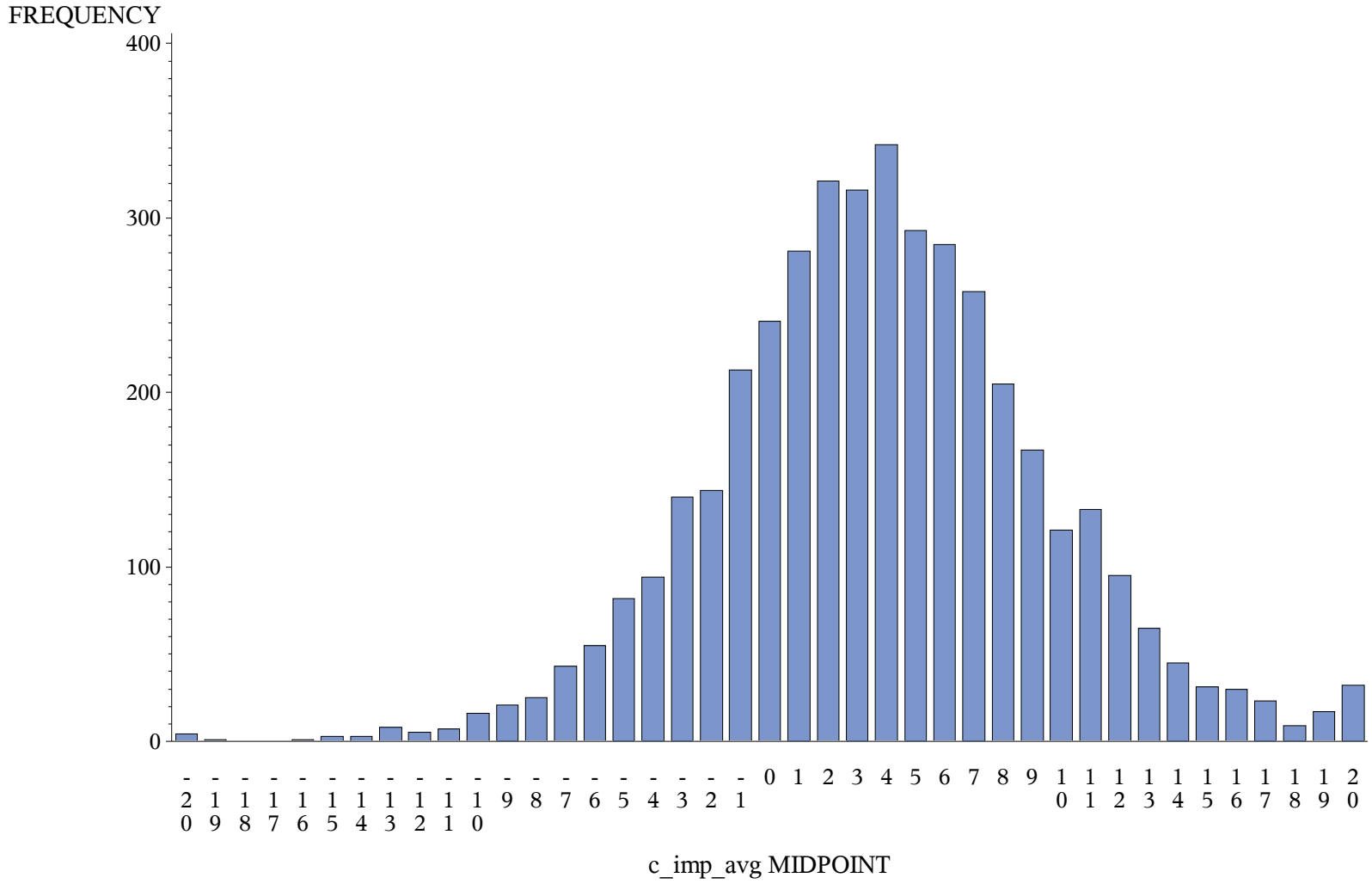
### Distribution Middle School (Gap)



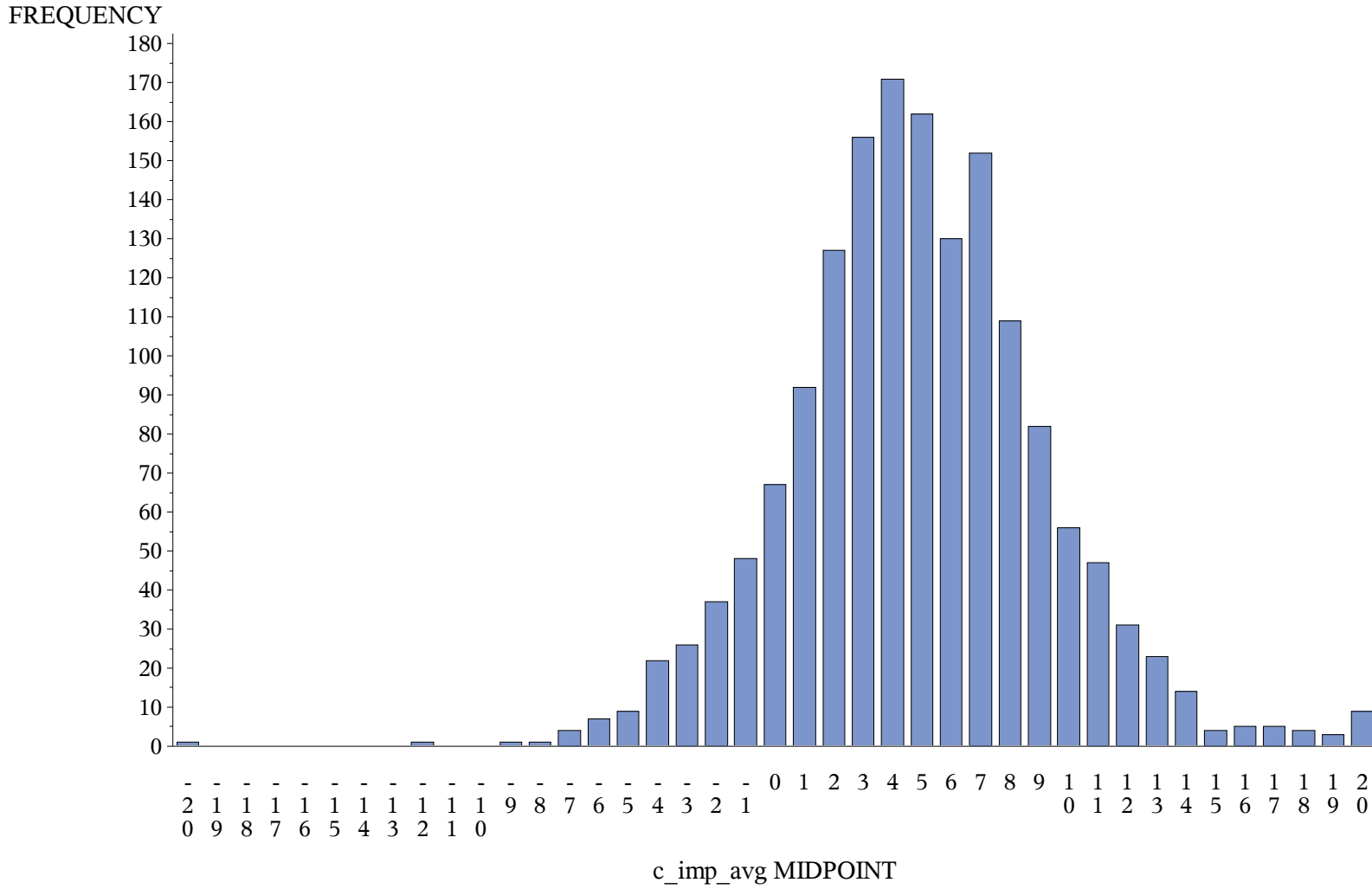
## Distribution Secondary-Both (Improvement)



## Distribution Elementary (Improvement)



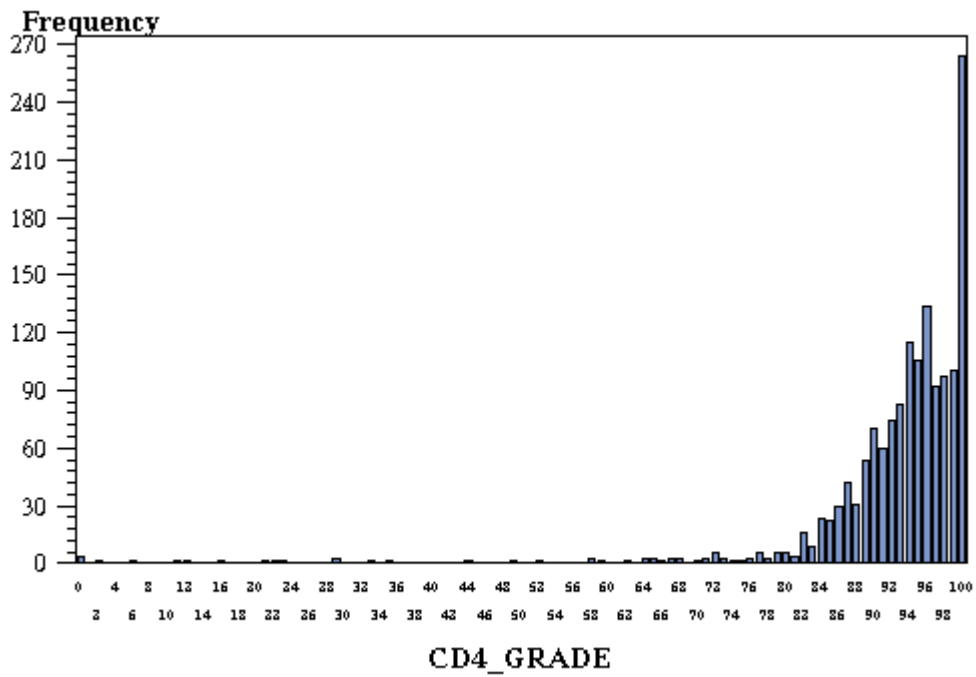
### Distribution Middle School (Improvement)





<b>Obs</b>	<b>CD4_GROUP</b>	<b>D</b>	<b>C</b>	<b>B</b>	<b>A</b>
<b>1</b>	S-B	84	88	96	100

<b>Table of CD4_GROUP by GRADE2</b>						
<b>CD4_GROUP</b>	<b>GRADE2</b>					
<b>Frequency Row Pct</b>	<b>A</b>	<b>B</b>	<b>C</b>	<b>D</b>	<b>F</b>	<b>Total</b>
<b>S-B</b>	228 16.16	410 29.06	588 41.67	115 8.15	70 4.96	1411
<b>Total</b>	228	410	588	115	70	1411
<b>Frequency Missing = 77</b>						



<b>Obs</b>	<b>d4_group</b>	<b>A</b>	<b>B</b>	<b>C</b>	<b>D</b>
<b>1</b>	Elementary	0.9	2.4	6.1	8.8
<b>2</b>	Middle Schools	1.0	2.4	5.5	7.5

<b>Table of d4_group by grade</b>						
<b>d4_group</b>	<b>grade</b>					
<b>Frequency Row Pct</b>	<b>A</b>	<b>B</b>	<b>C</b>	<b>D</b>	<b>F</b>	<b>Total</b>
<b>Elementary</b>	483 11.33	1223 28.70	1931 45.31	412 9.67	213 5.00	4262
<b>Middle Schools</b>	174 10.57	495 30.07	744 45.20	154 9.36	79 4.80	1646
<b>Total</b>	657	1718	2675	566	292	5908
<b>Frequency Missing = 379</b>						

