

G TUESDAY



G/T Tuesday

October 8, 2024



Agenda

- Welcome
- State Plan Updates
- Question/Answer
- District Share Outs and Happenings



Wellness Check





“...gifted and talented students” means a child or youth who **performs at or shows the potential for** performing at a remarkably high level of accomplishment when compared to others of the same age, experience, or environment and who:

Exhibits high performance capability in an intellectual, creative, or artistic area



OR

Possesses an unusual capacity for leadership



OR

Excels in a specific academic field





State Goal for Gifted/Talented

Students who participate in services designed for gifted/talented students will **demonstrate skills in self-directed learning, thinking, research and communication as evidenced by the development of innovative products and performances** that reflect individuality and creativity and are advanced in relation to students of similar age, experience, or environment.

High school graduates who have participated in services for gifted/talented students will have produced products and performances of professional quality as part of their program services.



TEXAS ASSOCIATION FOR THE GIFTED & TALENTED

Paulina van Eeden Hill, CAE | Executive Director
[512.499.8248](tel:512.499.8248) / paulina@txgifted.org | txgifted.org



State Plan Work Timeline - Finished



SBOE Approval to Review
November 2023

Focus Groups Review
February & March 2024

Rule – Effective
September 2024



CAC & State Draft Edits
December 2023 – April 2024

SBOE – COI
Rule Second Reading and
Adoption
State Plan Discussion/Item
June 2024

SBOE – COI
State Plan Second
Reading and Adoption
September 2024



Effective September 13, 2024

Fidelity of Services



USE OF G/T FUNDS FOR IDENTIFICATION AND SERVICES TO MEET THE NEEDS OF G/T STUDENTS



HIGHLIGHTS OF G/T PROGRAM EVALUATION IS PROVIDED TO THE SCHOOL BOARD




Student Identification

Language change from assessment to identification of students for G/T services

A large, light blue downward-pointing arrow indicating the flow from the first step to the second.

Language change from selection committee to placement committee for G/T services

A large, light blue downward-pointing arrow indicating the flow from the second step to the third.

Authorizes the G/T placement committee to consult with other committees or representations to address student exceptionalities, language, and other circumstances



Service Design

- One edit for clarity:
- Services for gifted/talented students are comprehensive, structured, sequenced, and appropriately challenging, including options in the four (4) foundation curricular **areas: as well as** arts, leadership, creativity, and career & technical education. (3.3.1)



Curriculum and Instruction

- Language update
- Educators adapt and/or modify the core or standard curriculum to meet the needs of gifted/talented students and those with **exceptionalities** such as twice- exceptional, highly gifted, and **emergent bilingual**. (4.9)

Professional Learning



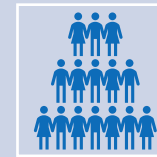
Language updates to professional learning



Administrators and Counselors receive an update after each legislative session



Language update on school board of trustees training for program accountability



New: After each legislative session, an update is provided to administrators, counselors and board of trustees. (5.13)



- Language updates for clarity
- 6.2 Input from family and community representatives on gifted/talented identification and assessment procedures is **collected** annually.
- 6.6 Products, **performances**, and achievements of gifted/talented students are shared with the community.
- Orientation and periodic **updates pertaining to the district's gifted/talented services** are provided for parents of students who are identified as gifted/talented and provided gifted/talented services.

Texas Education Code



Chapter 29. Educational Programs

§29.121. Definition.
 §29.122. Establishment.
 §29.123. State Plan; Assistance.
 §29.124. *Certification and Reporting Required* - Repealed



Chapter 39. Public School System Accountability

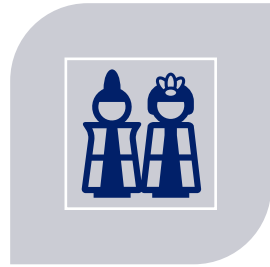
§39.236. Gifted And Talented Standards.



Chapter 48. Foundation School Program

§48.109. Gifted And Talented Student Allotment.
 §42.156. *Gifted and Talented Student Allotment.* - Repealed

Texas Administrative Code 19.89.A



§89.1. STUDENT IDENTIFICATION.



§89.2 PROFESSIONAL LEARNING.



§89.3. STUDENT SERVICES.

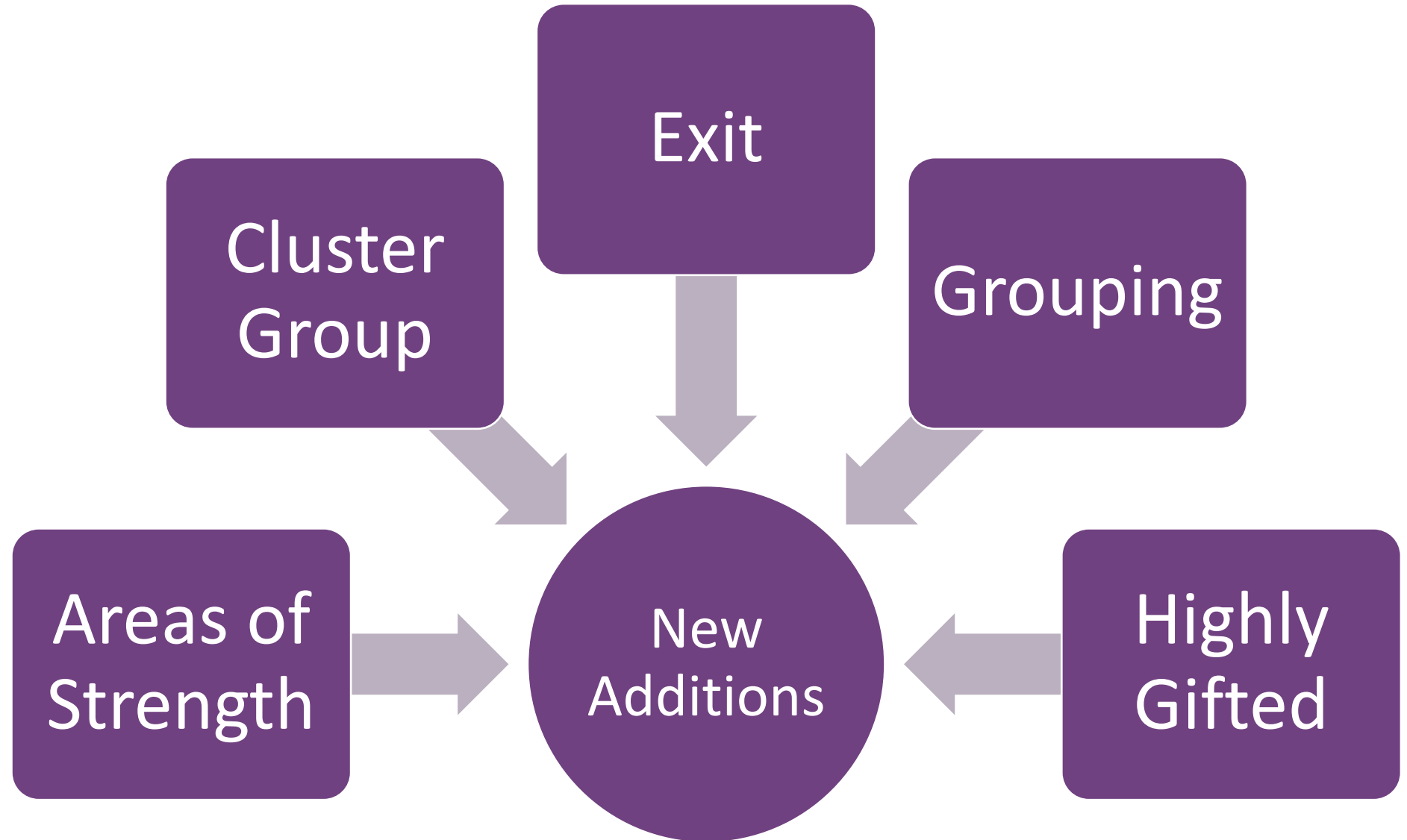


§89.4. FISCAL RESPONSIBILITY. (NEWLY AMENDED)



§89.5 PROGRAM ACCOUNTABILITY.

Glossary





Call for Outstanding Student Nominations - Lone Star Leader Award



Nominate students online at: <http://educationinaction.org/nominate-leaders>.



Fall Nomination Deadline: November 1, 2024.



For more information, visit <http://www.educationinaction.org/LSLA>, call 817-562-4957, x3, or email abarnes@educationinaction.org.

Question and Answer

Have you
thought about?

My question
is...

What if?

Could we?



Shout Outs and Happenings

[OSPM Special Education External Satisfaction Survey](#)



Web Resources

Texas G/T Program Implementation Resource



The Texas Performance Standards Project



Equity in G/T Education



Gifted/Talented Teacher Toolkit I



Gifted/Talented Teacher Toolkit II





[Home](#) / [Academics](#) / [Special Student Populations](#) / [Gifted and Talented Education](#)

Gifted Talented Education Resources



Welcome to the Gifted/Talented Education Resources page pertaining to the implementation of the Texas State Plan for the Education of Gifted/Talented Students.

G/T Tuesdays Implementation Series 2021-2022

G/T Tuesdays Archive 2021

Expand All

November 5, 2021 ▶

Topic: G/T Funds and Expenditures

Presentation

October 19, 2021 ▼

October 5, 2021 ▼

September 21, 2021 ▼

June 29, 2021 ▼

June 1, 2021 ▼

May 18, 2021 ▼

<https://tea.texas.gov/academics/special-student-populations/gifted-and-talented-education/gifted-talented-education-resources>



How to get announcements

<https://public.govdelivery.com/accounts/TXTEA/subscriber/new>



Contact Information

Monica Brewer, M.S.E.

Monica.brewer@tea.texas.gov

GTED@tea.texas.gov

512-475-0626



Thank you