

STATE OF TEXAS ASSESSMENTS OF ACADEMIC READINESS
Constructed Responses Summary Report
ENGLISH I
All Students

STATEWIDE PRELIMINARY

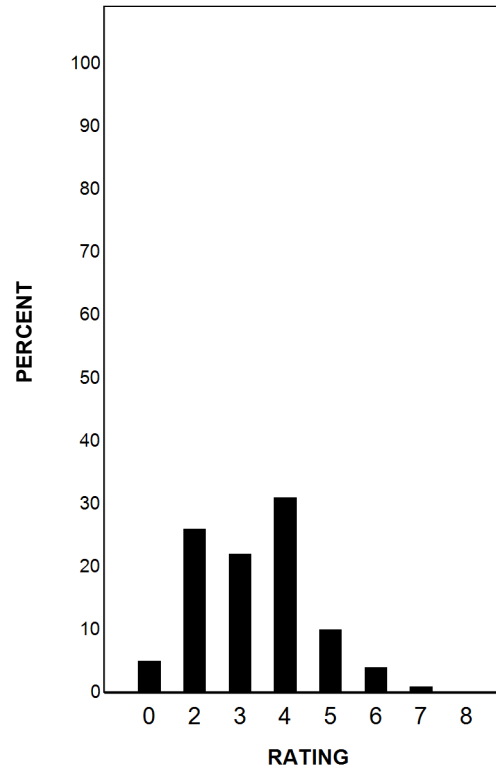
Report Date: FALL 2019
Date of Testing: FALL 2019

--- = No Data Reported For Fewer Than Five Students

Written Composition Rating Summary*

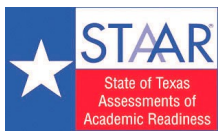
Expository Composition

Rating	#	%
0	6627	5
2	32647	26
3	28009	22
4	39780	31
5	13087	10
6	5236	4
7	853	1
8	359	0
Total	126598	100



Each composition has been scored independently by two readers. The written composition rating of 0-8 represents the summation of these scores.

* Results for students who took the test with the Braille, American Sign Language videos accommodation, or the paper STAAR with embedded supports are not included in this report.



STATE OF TEXAS ASSESSMENTS OF ACADEMIC READINESS
Constructed Responses Summary Report
ENGLISH I
First-Time Tested Students

STATEWIDE PRELIMINARY

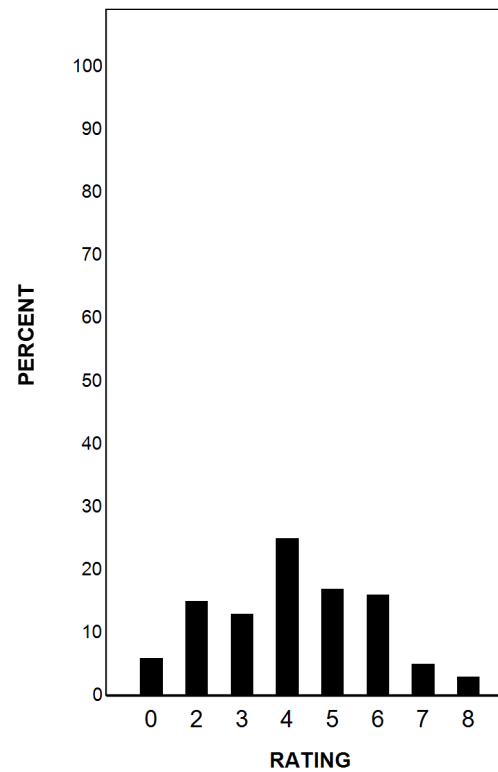
Report Date: FALL 2019
Date of Testing: FALL 2019

--- = No Data Reported For Fewer Than Five Students

Written Composition Rating Summary*

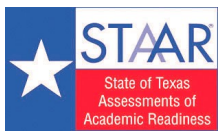
Expository Composition

Rating	#	%
0	713	6
2	1726	15
3	1488	13
4	2907	25
5	1942	17
6	1823	16
7	624	5
8	327	3
Total	11550	100



Each composition has been scored independently by two readers. The written composition rating of 0-8 represents the summation of these scores.

* Results for students who took the test with the Braille, American Sign Language videos accommodation, or the paper STAAR with embedded supports are not included in this report.



STATE OF TEXAS ASSESSMENTS OF ACADEMIC READINESS
Constructed Responses Summary Report
ENGLISH I
Retested Students

STATEWIDE PRELIMINARY

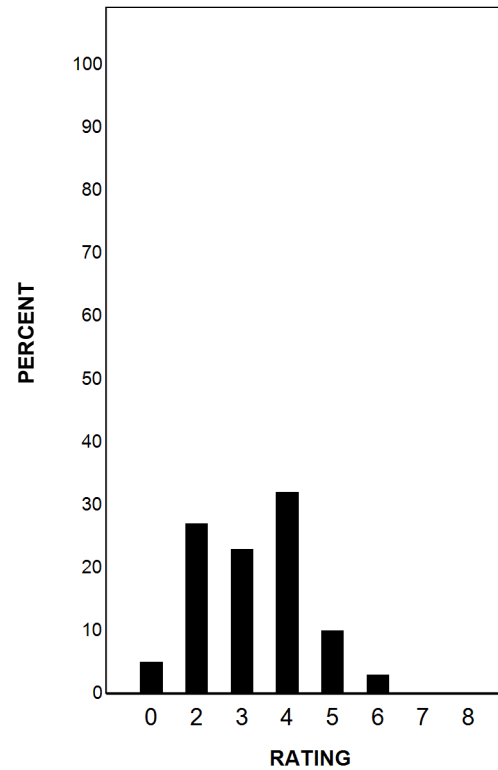
Report Date: FALL 2019
Date of Testing: FALL 2019

--- = No Data Reported For Fewer Than Five Students

Written Composition Rating Summary*

Expository Composition

Rating	#	%
0	5914	5
2	30921	27
3	26521	23
4	36873	32
5	11145	10
6	3413	3
7	229	0
8	32	0
Total	115048	100



Each composition has been scored independently by two readers. The written composition rating of 0-8 represents the summation of these scores.

* Results for students who took the test with the Braille, American Sign Language videos accommodation, or the paper STAAR with embedded supports are not included in this report.