

STATE OF TEXAS ASSESSMENTS OF ACADEMIC READINESS  
Constructed Responses Summary Report  
ENGLISH II  
All Students

STATEWIDE PRELIMINARY

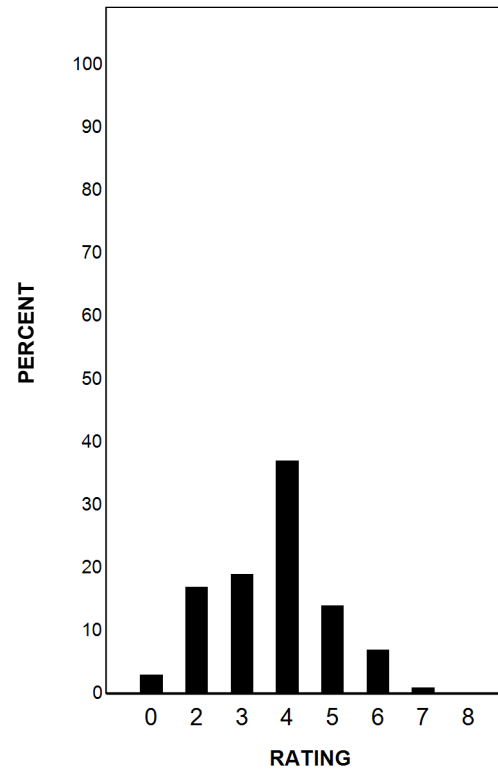
Report Date: FALL 2019  
Date of Testing: FALL 2019

--- = No Data Reported For Fewer Than Five Students

Written Composition Rating Summary\*

Persuasive Composition

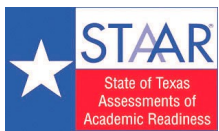
Rating	#	%
0	3311	3
2	17135	17
3	19306	19
4	37700	37
5	14557	14
6	7204	7
7	1212	1
8	492	0
Total	100917	100



Each composition has been scored independently by two readers. The written composition rating of 0-8 represents the summation of these scores.

\* Results for students who took the test with the Braille, American Sign Language videos accommodation, or the paper STAAR with embedded supports are not included in this report.





STATE OF TEXAS ASSESSMENTS OF ACADEMIC READINESS  
*Constructed Responses Summary Report*  
**ENGLISH II**  
First-Time Tested Students

STATEWIDE PRELIMINARY

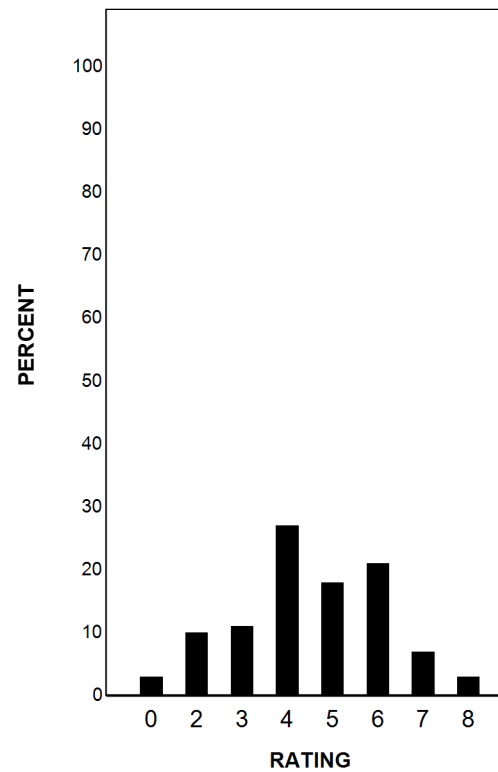
Report Date: FALL 2019  
Date of Testing: FALL 2019

--- = No Data Reported For Fewer Than Five Students

**Written Composition Rating Summary\***

**Persuasive Composition**

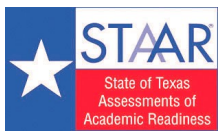
Rating	#	%
0	387	3
2	1307	10
3	1427	11
4	3502	27
5	2430	18
6	2780	21
7	882	7
8	453	3
Total	13168	100



Each composition has been scored independently by two readers. The written composition rating of 0-8 represents the summation of these scores.

\* Results for students who took the test with the Braille, American Sign Language videos accommodation, or the paper STAAR with embedded supports are not included in this report.





STATE OF TEXAS ASSESSMENTS OF ACADEMIC READINESS  
Constructed Responses Summary Report  
ENGLISH II  
Retested Students

STATEWIDE PRELIMINARY

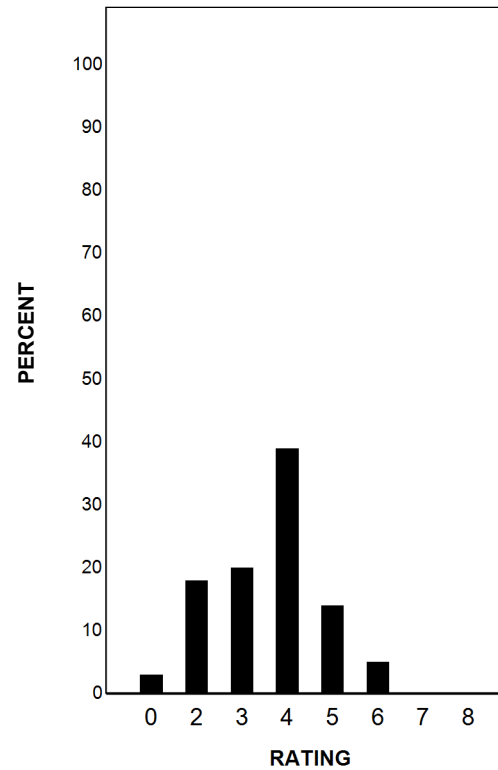
Report Date: FALL 2019  
Date of Testing: FALL 2019

--- = No Data Reported For Fewer Than Five Students

Written Composition Rating Summary\*

Persuasive Composition

Rating	#	%
0	2924	3
2	15828	18
3	17879	20
4	34198	39
5	12127	14
6	4424	5
7	330	0
8	39	0
Total	87749	100



Each composition has been scored independently by two readers. The written composition rating of 0-8 represents the summation of these scores.

\* Results for students who took the test with the Braille, American Sign Language videos accommodation, or the paper STAAR with embedded supports are not included in this report.