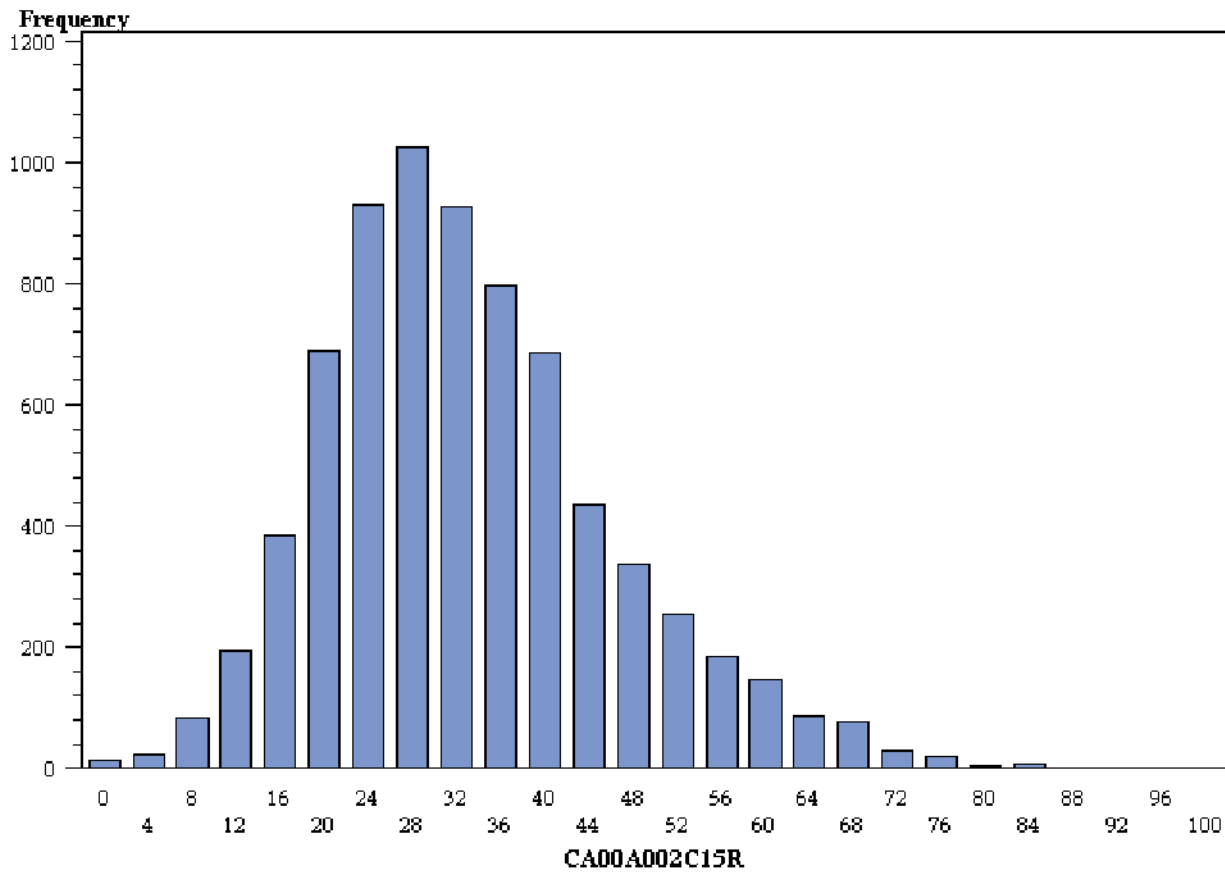
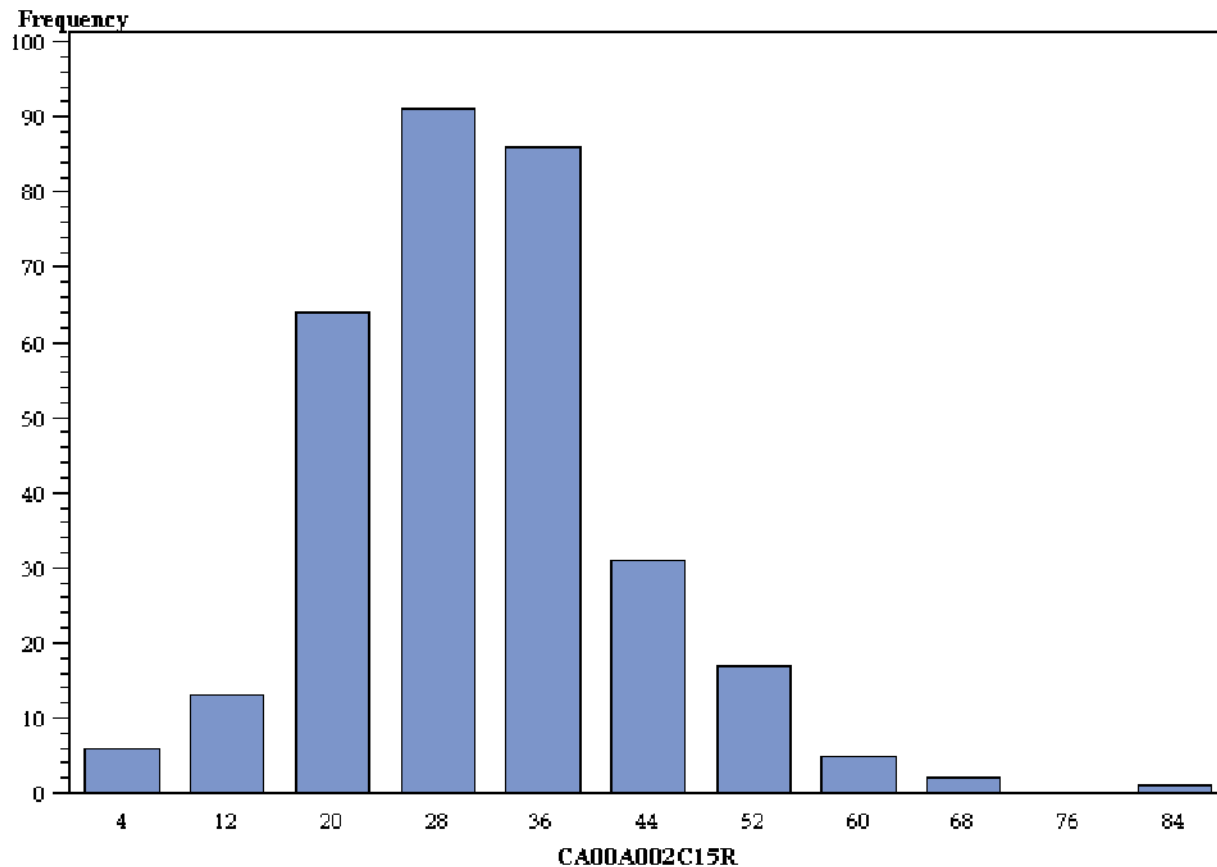


***Domain II - Previous Year Final Level II
Based on 2015 STAAR Progress Measure
Distribution - All Campuses***



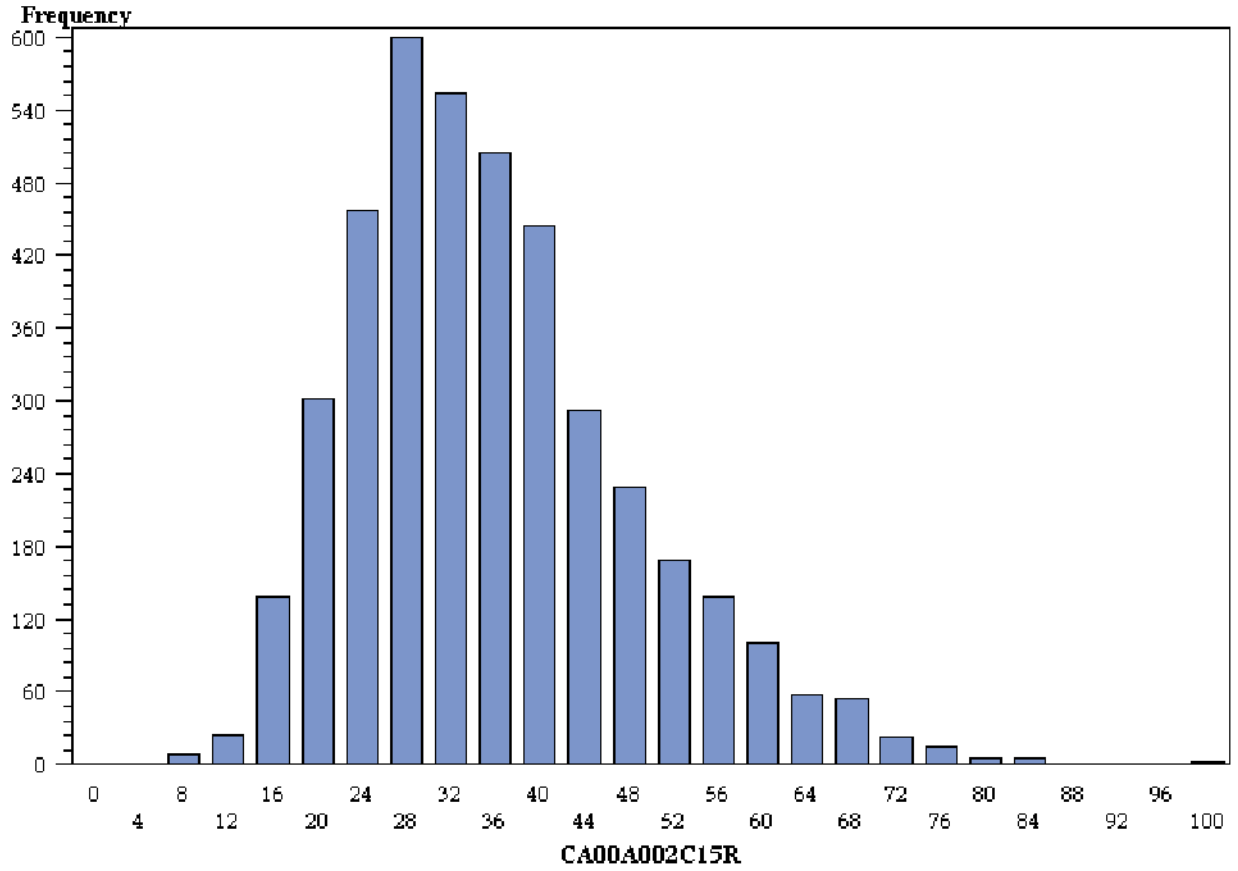
***Domain II - Previous Year Final Level II
Based on 2015 STAAR Progress Measure
Distribution - By Campus Type***

Campus Type (B,E,M,S) Total Enrollment=B



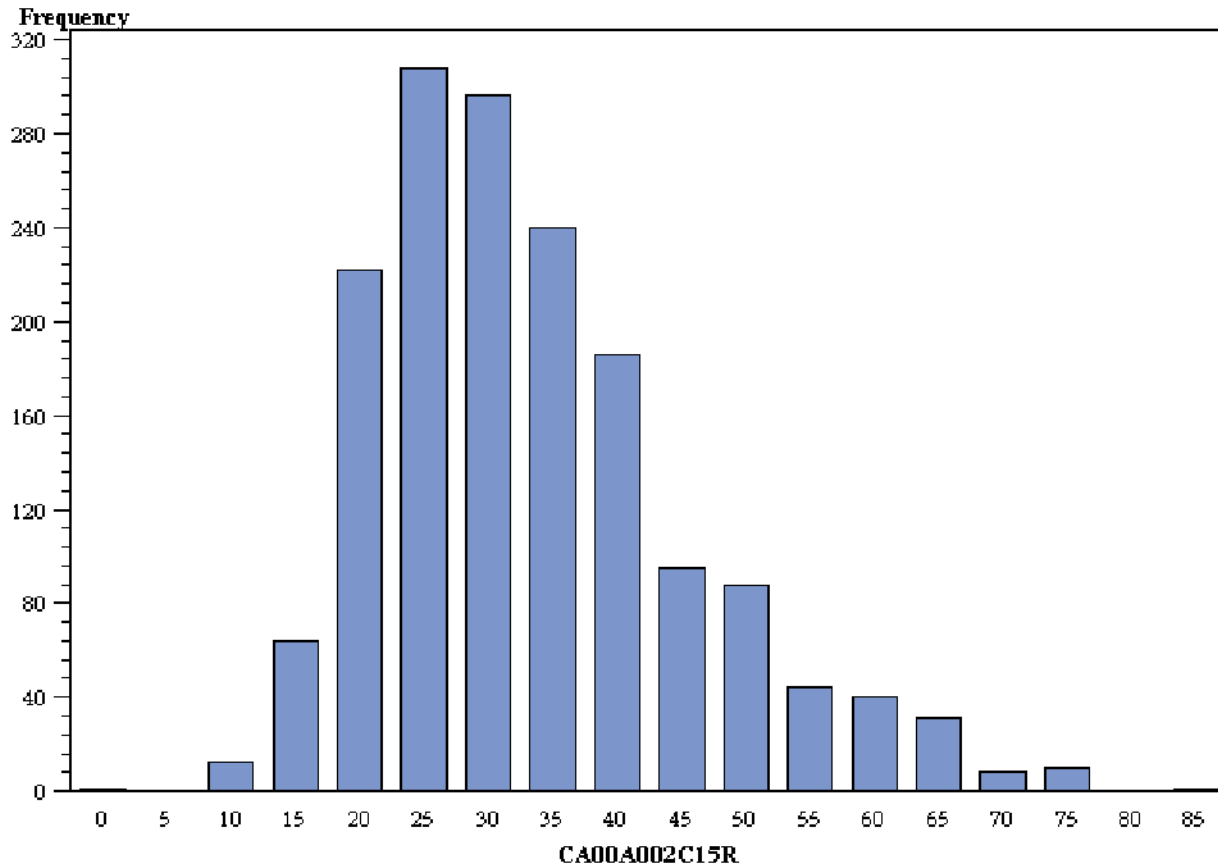
***Domain II - Previous Year Final Level II
Based on 2015 STAAR Progress Measure
Distribution - By Campus Type***

Campus Type (B,E,M,S) Total Enrollment=E



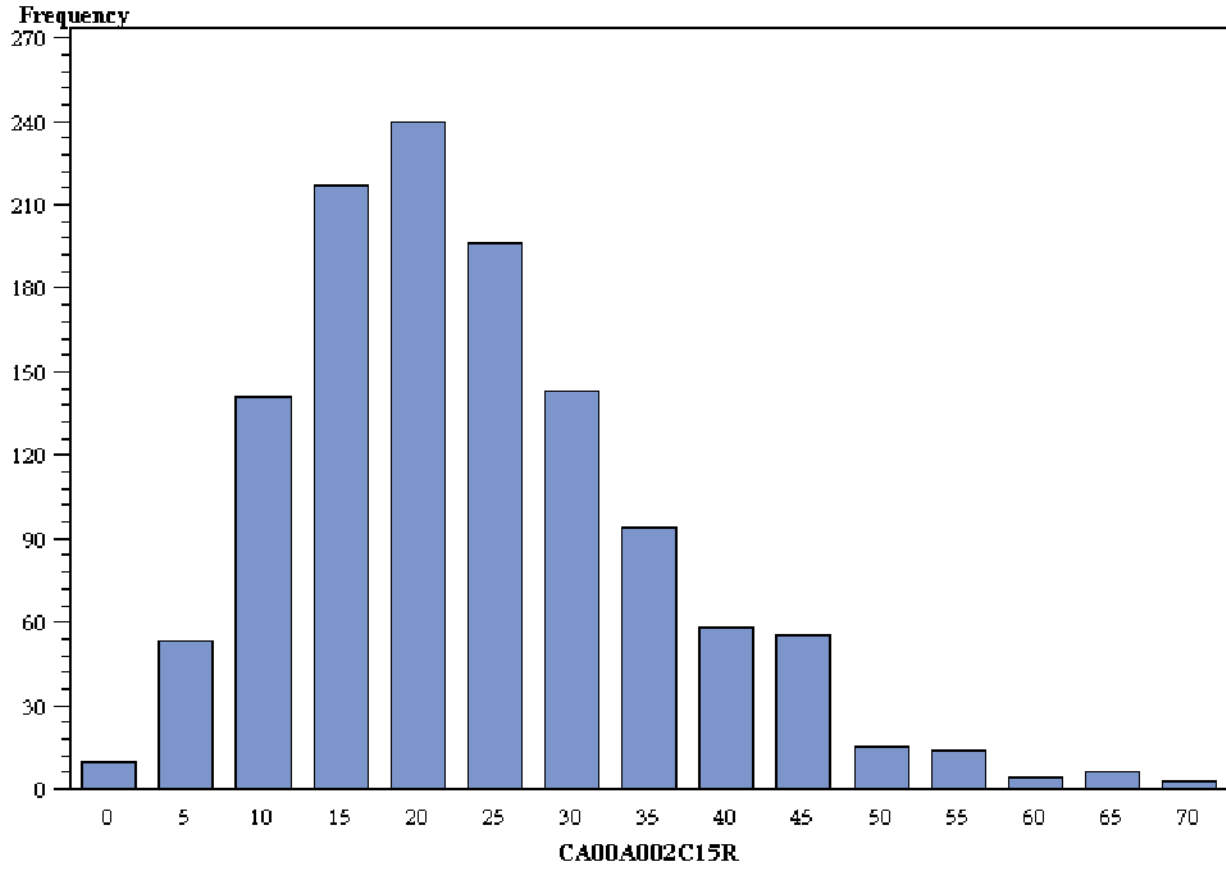
***Domain II - Previous Year Final Level II
Based on 2015 STAAR Progress Measure
Distribution - By Campus Type***

Campus Type (B,E,M,S) Total Enrollment=M



***Domain II - Previous Year Final Level II
Based on 2015 STAAR Progress Measure
Distribution - By Campus Type***

Campus Type (B,E,M,S) Total Enrollment=S



**Domain II - Previous Year Final Level II
Based on 2015 STAAR Progress Measure
Statistics by Campus Type**

The MEANS Procedure

Analysis Variable : CA00A002C15R									
Campus Type (B,E,M,S) Total Enrollment	N Obs	Minimum	Maximum	Mean	10th Pctl	25th Pctl	Median	75th Pctl	90th Pctl
B	341	0	86	30	18	23	30	37	44
E	4132	0	100	35	21	26	33	42	53
M	1654	0	87	33	20	24	31	40	51
S	1286	0	71	24	10	15	22	30	40

Domain II - Previous Year Final Level II
Based on 2015 STAAR Progress Measure
Previous Year Final Level II by Current Year Progress Measure Percentages

The FREQ Procedure

Frequency	Table 1 of py by met				
	Controlling for GRDTYPE=				
	py	met			Total
0		1	2		
0	26.51	23.57	8.10	58.18	
1	17.19	17.12	7.50	41.81	
Total	43.70	40.69	15.60	99.99	

Frequency	Table 2 of py by met				
	Controlling for GRDTYPE=B				
	py	met			Total
0		1	2		
0	25.92	23.38	7.97	57.27	
1	17.94	17.48	7.32	42.74	
Total	43.86	40.86	15.29	100.01	

Frequency	Table 3 of py by met				
	Controlling for GRDTYPE=E				
	py	met			Total
0		1	2		
0	23.61	25.58	12.74	61.93	
1	14.81	15.26	8.00	38.07	
Total	38.42	40.84	20.74	100.00	

Frequency	Table 4 of py by met				
	Controlling for GRDTYPE=M				
	py	met			Total
0		1	2		
0	24.89	24.10	8.71	57.70	
1	15.88	17.16	9.26	42.30	
Total	40.77	41.26	17.97	100.00	

***Domain II - Previous Year Final Level II
Based on 2015 STAAR Progress Measure
Previous Year Final Level II by Current Year Progress Measure Percentages***

The FREQ Procedure

Frequency	Table 5 of py by met			
	Controlling for GRDTYPE=S			
	py	met		
0		1	2	
0	33.70	19.95	0.93	54.58
1	22.85	19.37	3.20	45.42
Total	56.55	39.32	4.13	100.00

**Domain II - Previous Year Final Level II
Based on 2015 STAAR Progress Measure
Grade Distribution by All Campuses**

The FREQ Procedure

Frequency Percent Row Pct	Table of GRDTYPE by grade						
	GRDTYPE(Campus Type (B,E,M,S) Total Enrollment)	grade					
		A	B	C	D	F	Total
	B	20 0.27 6.33	55 0.75 17.41	144 1.96 45.57	67 0.91 21.20	30 0.41 9.49	316 4.31
	E	573 7.81 13.89	965 13.15 23.39	1799 24.52 43.60	616 8.40 14.93	173 2.36 4.19	4126 56.24
	M	183 2.49 11.12	320 4.36 19.44	717 9.77 43.56	349 4.76 21.20	77 1.05 4.68	1646 22.43
	S	38 0.52 3.04	117 1.59 9.37	350 4.77 28.02	323 4.40 25.86	421 5.74 33.71	1249 17.02
	Total	814 11.09	1457 19.86	3010 41.02	1355 18.47	701 9.55	7337 100.00
	Frequency Missing = 76						

**Domain II - Previous Year Final Level II
Based on 2015 STAAR Progress Measure
Grade Distribution by Campus Type**

The FREQ Procedure

Frequency Percent Row Pct	Table of GRDTYPE by grade						
	GRDTYPE(Campus Type (B,E,M,S) Total Enrollment)	grade					Total
		A	B	C	D	F	
	B	34 0.46 10.76	67 0.91 21.20	132 1.80 41.77	53 0.72 16.77	30 0.41 9.49	316 4.31
	E	437 5.96 10.59	862 11.75 20.89	1592 21.70 38.58	873 11.90 21.16	362 4.93 8.77	4126 56.24
	M	165 2.25 10.02	338 4.61 20.53	658 8.97 39.98	334 4.55 20.29	151 2.06 9.17	1646 22.43
	S	132 1.80 10.57	260 3.54 20.82	484 6.60 38.75	273 3.72 21.86	100 1.36 8.01	1249 17.02
	Total	768 10.47	1527 20.81	2866 39.06	1533 20.89	643 8.76	7337 100.00
	Frequency Missing = 76						