

The logo for the Texas Education Agency (TEA), featuring the letters "TEA" in a bold, white, sans-serif font with a stylized white arrow pointing upwards and to the right, set against a blue background.The "Strong Start" logo, which includes the words "STRONG" and "START" in a bold, white, sans-serif font, positioned over a large orange circle with a dark blue leaf-like shape overlapping it.

2020-21

Asynchronous Plan Exemplars and Rubric Rationale



Where to find this document:

<https://tea.texas.gov/texas-schools/health-safety-discipline/covid/remote-instruction-requirements>

What an exemplar plan is and is NOT



An example of **ONE** way to develop a plan that meets the criteria in the rubric



The only or “best” way to develop a plan.



An example of the level of detail LEAs could include in their plan to ensure the plan has enough evidence to be rated against the rubric, but not be overwhelming for LEAs to submit or reviewers to review



A comprehensive plan that includes every detail for every grade, subject, campus, course requirement or particular contexts that individual LEAs will need to consider



Additional guidance and considerations for LEAs as they create their plan



An endorsement of any particular set of materials or products

Links to Exemplar Plans and Rubric Rationale



District	Description	Draft Exemplar Plan Link	Rubric Rationale Link
Aldine ISD	Mid-size, urban district	Aldine ISD Draft Exemplar Plan	Aldine ISD Rubric Rationale
Hawkins ISD	Small, rural district	Hawkins ISD Draft Exemplar Plan	Hawkins ISD Rubric Rationale
Lubbock ISD	Mid-size, urban district	Lubbock ISD Draft Exemplar Plan	Lubbock ISD Rubric Rationale
DeSoto ISD	Small, suburban district	DeSoto ISD Draft Exemplar Plan	DeSoto ISD Rubric Rationale

Note: All of these exemplar plans are still in draft form as the LEAs are continuing to gather input from stakeholders and finalize with approval from their school boards. They have graciously shared these drafts to be used as examples for us to learn from, but the details of the plans may still change before they are final and submitted to TEA for approval.

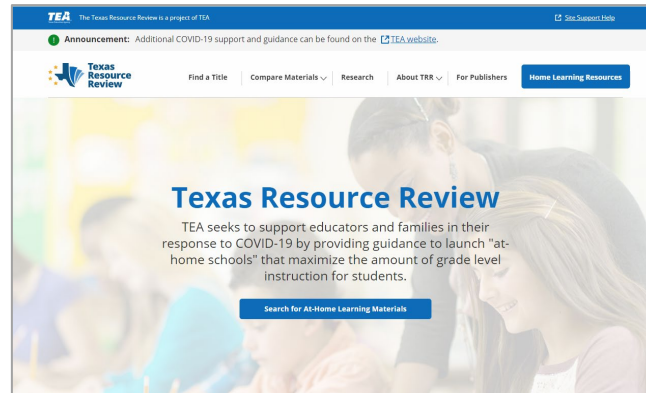
Additional Resources

As you develop your asynchronous plan, you can reference these resources for additional support.

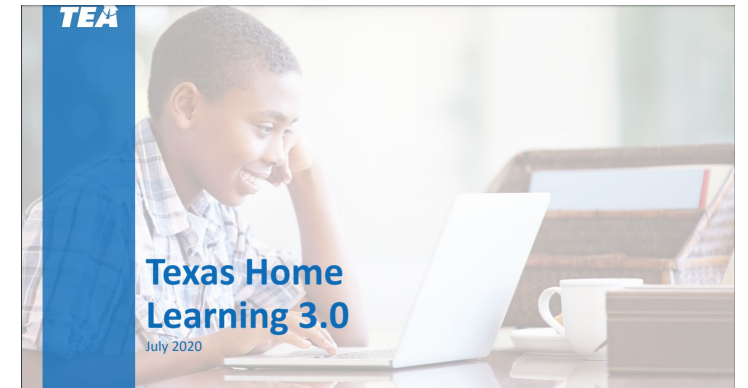
[Strong Start Reflection Tool](#)



[Texas Resource Review](#)



[THL 3.0 Update](#)



Webinars to Learn More

On the [Remote Instruction Requirements](#) Webpage

Document	Description	Release
Webinar on Annotated Asynchronous Plan Exemplars July 21 2020	Training for LEAs on Asynchronous Plan requirements through analysis of the exemplars, rubric ratings, and rationale	Posted