

STATE OF TEXAS ASSESSMENTS OF ACADEMIC READINESS

Summary Report

ENGLISH III

All Students

STATEWIDE

Report Date: SUMMER 2016
Date of Testing: SPRING 2016

Administration Summary			Number of Students Tested	Average Scale Score	PASSED		DID NOT PASS		Results for Each Reporting Category																	
					Level II: Satisfactory	Level III: Advanced	Level I: Unsatisfactory		1				2		3		4		5		6					
Number	Percent				#	%	#	%	Understanding/ Analysis Across Genres				Understanding/ Analysis of Literary Texts		Understanding/ Analysis of Informational Texts		Composition		Revision		Editing					
Students Tested	10337	88							Short Answer Rating (Single Selection)	Short Answer Rating (Paired Selections)	Multiple Choice															
Students Not Tested																										
Absent	1357	12																								
Other	26	0																								
Total Documents Submitted	11720	100																								
Legend																										
--- = No Data Reported For Fewer Than Five Students																										
									Number of Points Possible				11		11		24		11		11					
									Number of Points Scored																	
									#	%	#	%	#	%	#	%	#	%	#	%	#	%	#	%		
All Students			10337	3985	7211	70	1380	13	3126	30	4.5	50	3.9	44	3.6	61	5.9	53	6.5	59	11.0	46	6.7	61	7.0	64
Male			5343	3886	3315	62	518	10	2028	38	3.9	43	3.5	39	3.4	57	5.5	50	6.2	56	10.2	43	6.5	59	6.6	60
Female			4993	4092	3895	78	862	17	1098	22	5.1	57	4.4	49	3.9	65	6.3	57	6.8	62	11.8	49	7.0	64	7.4	68
No Information Provided			1																							
Hispanic/Latino			7188	3973	4990	69	899	13	2198	31	4.5	50	4.0	44	3.6	60	5.8	53	6.4	58	11.0	46	6.6	60	6.9	63
American Indian or Alaska Native			25	3879	15	60	4	16	10	40	4.2	47	4.2	47	3.0	51	5.5	50	5.8	52	11.3	47	6.3	57	6.3	57
Asian			92	4244	71	77	33	36	21	23	5.0	56	4.3	47	4.2	70	6.6	60	7.2	66	13.2	55	7.6	69	8.0	73
Black or African American			789	3858	462	59	69	9	327	41	4.2	47	3.6	40	3.4	56	5.3	48	5.9	54	10.0	41	6.1	56	6.5	59
Native Hawaiian or Other Pacific Islander			10	3941	7	70	0	0	3	30	4.8	53	3.3	37	3.7	62	5.7	52	6.6	60	12.3	51	5.4	49	6.3	57
White			2135	4061	1594	75	365	17	541	25	4.6	51	3.9	44	3.9	65	6.3	58	6.9	63	11.2	47	7.2	66	7.5	68
Two or More Races			92	4002	68	74	9	10	24	26	4.5	50	3.8	42	3.7	62	6.0	55	6.3	57	11.2	46	6.8	62	6.9	63
No Information Provided			6	4103	4	67	1	17	2	33	5.5	61	5.5	61	3.3	56	6.2	56	7.0	64	13.0	54	5.7	52	7.0	64
Economically Disadvantaged	Yes		6796	3938	4529	67	741	11	2267	33	4.4	48	3.9	43	3.5	58	5.7	52	6.3	57	10.7	44	6.5	59	6.8	61
	No		3540	4076	2682	76	639	18	858	24	4.7	52	4.1	46	3.9	65	6.3	57	6.8	62	11.6	48	7.2	65	7.5	68
	No Information Provided		1																							
Title I, Part A	Participants		7534	3990	5302	70	1021	14	2232	30	4.6	51	4.0	45	3.6	61	5.8	53	6.5	59	11.1	46	6.7	61	7.0	63
	Nonparticipants		2802	3971	1909	68	359	13	893	32	4.3	48	3.7	41	3.6	60	5.9	54	6.5	59	10.7	45	6.8	62	7.1	64
	No Information Provided		1																							
Migrant	Yes		173	3783	97	56	5	3	76	44	3.7	41	3.4	38	3.2	53	5.1	46	5.7	52	9.1	38	6.1	55	6.2	56
	No		10158	3989	7111	70	1375	14	3047	30	4.5	50	3.9	44	3.6	61	5.9	54	6.5	59	11.0	46	6.7	61	7.0	64
	No Information Provided		6	3753	3	50	0	0	3	50	2.5	28	3.0	33	2.8	47	5.7	52	5.7	52	9.5	40	6.2	56	6.3	58
Limited English Proficient	Current LEP		803	3541	256	32	7	1	547	68	2.6	29	2.7	30	2.4	40	4.2	38	4.7	43	7.5	31	4.5	41	5.1	46
	Non-LEP (Monitored 1st Year)		88	3908	58	66	3	3	30	34	4.3	48	4.0	44	3.5	59	5.6	51	6.3	57	10.4	43	6.2	57	6.2	56
	Non-LEP (Monitored 2nd Year)		129	3940	90	70	9	7	39	30	4.8	53	4.4	49	3.4	56	5.5	50	6.2	56	10.7	44	6.4	58	6.5	59
	Other Non-LEP		9316	4025	6807	73	1361	15	2509	27	4.6	51	4.0	45	3.7	62	6.0	55	6.6	60	11.3	47	6.9	63	7.2	65
	No Information Provided		1																							
Bilingual	Participants		2																							
	Nonparticipants		10331	3985	7208	70	1380	13	3123	30	4.5	50	3.9	44	3.6	61	5.9	53	6.5	59	11.0	46	6.7	61	7.0	64
	No Information Provided		4																							
ESL	Participants		783	3549	253	32	8	1	530	68	2.7	29	2.8	31	2.4	40	4.3	39	4.7	43	7.6	32	4.6	41	5.1	46
	Nonparticipants		9550	4021	6957	73	1372	14	2593	27	4.6	51	4.0	45	3.7	62	6.0	55	6.6	60	11.3	47	6.9	63	7.1	65
	No Information Provided		4																							
Special Education	Yes		608	3406	114	19	5	1	494	81	2.0	22	1.7	19	2.2	37	3.7	34	4.2	39	6.8	28	4.1	37	4.4	40
	No		9728	4021	7097	73	1375	14	2631	27	4.6	51	4.1	45	3.7	62	6.0	55	6.6	60	11.3	47	6.9	63	7.2	65
	No Information Provided		1																							
Gifted/Talented	Participants		820	4426	755	92	338	41	65	8	6.0	66	5.1	56	4.7	78	7.3	67	8.0	72	14.4	60	8.6	78	8.8	80
	Nonparticipants		9516	3947	6456	68	1042	11	3060	32	4.3	48	3.8	43	3.5	59	5.7	52	6.3	58	10.7	45	6.6	60	6.8	62
	No Information Provided		1																							
At-Risk	Yes		4911	3726	2491	51	143	3	2420	49	3.5	39	3.2	35	3.0	50	4.9	45	5.5	50	9.0	37	5.6	51	5.9	54
	No		5426	4220	4720	87	1237	23	706	13	5.4	59	4.6	52	4.2	70	6.7	61	7.4	67	12.8	53	7.8	71	8.0	73
	No Information Provided		0																							
Career/Technical Education	Participants		7343	3957	5003	68	853	12	2340	32	4.3	48	3.8	42	3.6	60	5.8	52	6.4	58	10.8	45	6.6	60	6.9	63
	Nonparticipants		2992	4054	2207	74	527	18	785	26	4.8	53	4.3	47	3.8	63	6.1	56	6.7	61	11.6	48	7.0	64	7.1	65
	No Information Provided		2																							



STATE OF TEXAS ASSESSMENTS OF ACADEMIC READINESS
Constructed Responses Summary Report
ENGLISH III
All Students

STATEWIDE

Report Date: SUMMER 2016
 Date of Testing: SPRING 2016

--- = No Data Reported For Fewer Than Five Students

Short Answer Rating Summary

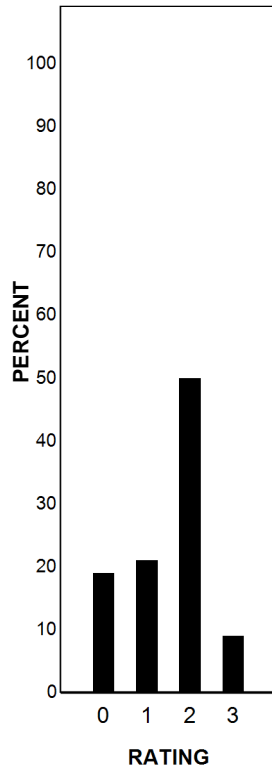
Written Composition Rating Summary

Single Selection

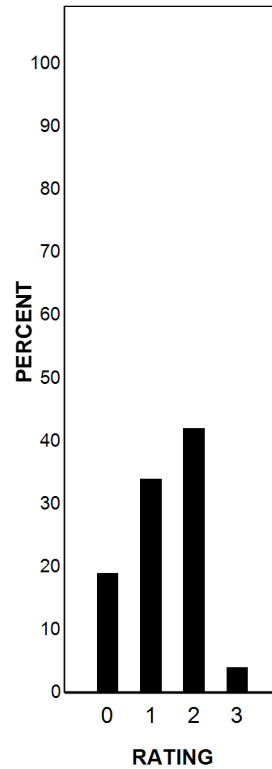
Paired Selections

Analytical Composition

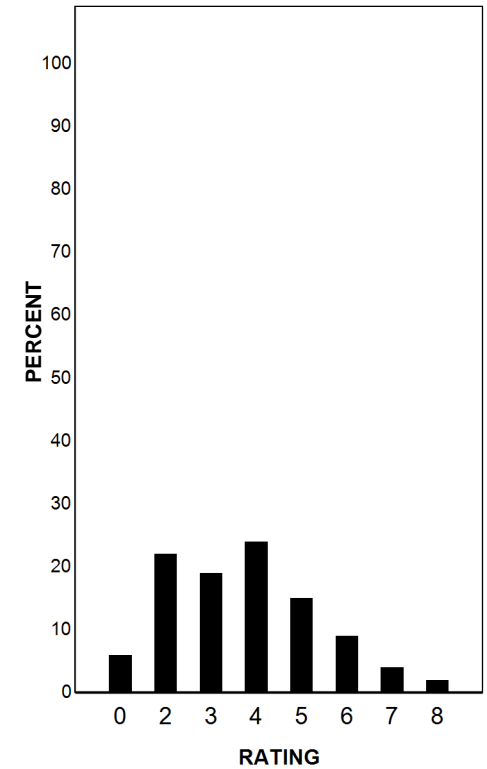
Rating	#	%
0	1991	19
1	2220	21
2	5169	50
3	957	9
Total	10337	100



Rating	#	%
0	2005	19
1	3551	34
2	4328	42
3	453	4
Total	10337	100



Rating	#	%
0	591	6
2	2265	22
3	1935	19
4	2468	24
5	1564	15
6	932	9
7	405	4
8	177	2
Total	10337	100



Each Composition has been scored independently by two readers. The written composition rating of 0-8 represents the summation of these scores.



STATE OF TEXAS ASSESSMENTS OF ACADEMIC READINESS

Summary Report

ENGLISH III

First-Time Tested Students

STATEWIDE

Report Date: SUMMER 2016

Date of Testing: SPRING 2016

Administration Summary			Number of Students Tested	Average Scale Score	PASSED				DID NOT PASS		Results for Each Reporting Category																
Number	Percent	Level II: Satisfactory			Level III: Advanced	Level I: Unsatisfactory	1						2	3	4	5	6										
Students Tested	10337						88	Understanding/ Analysis Across Genres						Understanding/ Analysis of Literary Texts	Understanding/ Analysis of Informational Texts	Composition	Revision	Editing									
Students Not Tested	Absent	Other			Total Documents Submitted	1720	100	Short Answer Rating (Single Selection)	Short Answer Rating (Paired Selections)	Multiple Choice	Number of Points Possible																
1357	12	26			0	11720	100				9		9		6		11		11		24		11		11		
Legend					Number of Points Scored																						
--- = No Data Reported For Fewer Than Five Students			#	%	#	%	#	%	#	%	#	%	#	%	#	%	#	%	#	%	#	%	#	%			
All Students			10337	3985	7211	70	1380	13	3126	30	4.5	50	3.9	44	3.6	61	5.9	53	6.5	59	11.0	46	6.7	61	7.0	64	
Male			5343	3886	3315	62	518	10	2028	38	3.9	43	3.5	39	3.4	57	5.5	50	6.2	56	10.2	43	6.5	59	6.6	60	
Female			4993	4092	3895	78	862	17	1098	22	5.1	57	4.4	49	3.9	65	6.3	57	6.8	62	11.8	49	7.0	64	7.4	68	
No Information Provided			1	---	---	---	---	---	---	---	---	---	---	---	---	---	---	---	---	---	---	---	---	---	---	---	
Hispanic/Latino			7188	3973	4990	69	899	13	2198	31	4.5	50	4.0	44	3.6	60	5.8	53	6.4	58	11.0	46	6.6	60	6.9	63	
American Indian or Alaska Native			25	3879	15	60	4	16	10	40	4.2	47	4.2	47	3.0	51	5.5	50	5.8	52	11.3	47	6.3	57	6.3	57	
Asian			92	4244	71	77	33	36	21	23	5.0	56	4.3	47	4.2	70	6.6	60	7.2	66	13.2	55	7.6	69	8.0	73	
Black or African American			789	3858	462	59	69	9	327	41	4.2	47	3.6	40	3.4	56	5.3	48	5.9	54	10.0	41	6.1	56	6.5	59	
Native Hawaiian or Other Pacific Islander			10	3941	7	70	0	0	3	30	4.8	53	3.3	37	3.7	62	5.7	52	6.6	60	12.3	51	5.4	49	6.3	57	
White			2135	4061	1594	75	365	17	541	25	4.6	51	3.9	44	3.9	65	6.3	58	6.9	63	11.2	47	7.2	66	7.5	68	
Two or More Races			92	4002	68	74	9	10	24	26	4.5	50	3.8	42	3.7	62	6.0	55	6.3	57	11.2	46	6.8	62	6.9	63	
No Information Provided			6	4103	4	67	1	17	2	33	5.5	61	5.5	61	3.3	56	6.2	56	7.0	64	13.0	54	5.7	52	7.0	64	
Economically Disadvantaged			Yes	6796	3938	4529	67	741	11	2267	33	4.4	48	3.9	43	3.5	58	5.7	52	6.3	57	10.7	44	6.5	59	6.8	61
No Information Provided			No	3540	4076	2682	76	639	18	858	24	4.7	52	4.1	46	3.9	65	6.3	57	6.8	62	11.6	48	7.2	65	7.5	68
Title I, Part A			Participants	7534	3990	5302	70	1021	14	2232	30	4.6	51	4.0	45	3.6	61	5.8	53	6.5	59	11.1	46	6.7	61	7.0	63
No Information Provided			Nonparticipants	2802	3971	1909	68	359	13	893	32	4.3	48	3.7	41	3.6	60	5.9	54	6.5	59	10.7	45	6.8	62	7.1	64
Migrant			Yes	173	3783	97	56	5	3	76	44	3.7	41	3.4	38	3.2	53	5.1	46	5.7	52	9.1	38	6.1	55	6.2	56
No Information Provided			No	10158	3989	7111	70	1375	14	3047	30	4.5	50	3.9	44	3.6	61	5.9	54	6.5	59	11.0	46	6.7	61	7.0	64
Limited English Proficient			Current LEP	803	3541	256	32	7	1	547	68	2.6	29	2.7	30	2.4	40	4.2	38	4.7	43	7.5	31	4.5	41	5.1	46
No Information Provided			Non-LEP (Monitored 1st Year)	88	3908	58	66	3	3	30	34	4.3	48	4.0	44	3.5	59	5.6	51	6.3	57	10.4	43	6.2	57	6.2	56
No Information Provided			Non-LEP (Monitored 2nd Year)	129	3940	90	70	9	7	39	30	4.8	53	4.4	49	3.4	56	5.5	50	6.2	56	10.7	44	6.4	58	6.5	59
No Information Provided			Other Non-LEP	9316	4025	6807	73	1361	15	2509	27	4.6	51	4.0	45	3.7	62	6.0	55	6.6	60	11.3	47	6.9	63	7.2	65
Bilingual			Participants	2	---	---	---	---	---	---	---	---	---	---	---	---	---	---	---	---	---	---	---	---	---	---	---
No Information Provided			Nonparticipants	10331	3985	7208	70	1380	13	3123	30	4.5	50	3.9	44	3.6	61	5.9	53	6.5	59	11.0	46	6.7	61	7.0	64
ESL			Participants	783	3549	253	32	8	1	530	68	2.7	29	2.8	31	2.4	40	4.3	39	4.7	43	7.6	32	4.6	41	5.1	46
No Information Provided			Nonparticipants	9550	4021	6957	73	1372	14	2593	27	4.6	51	4.0	45	3.7	62	6.0	55	6.6	60	11.3	47	6.9	63	7.1	65
Special Education			Yes	608	3406	114	19	5	1	494	81	2.0	22	1.7	19	2.2	37	3.7	34	4.2	39	6.8	28	4.1	37	4.4	40
No Information Provided			No	9728	4021	7097	73	1375	14	2631	27	4.6	51	4.1	45	3.7	62	6.0	55	6.6	60	11.3	47	6.9	63	7.2	65
Gifted/Talented			Participants	820	4426	755	92	338	41	65	8	6.0	66	5.1	56	4.7	78	7.3	67	8.0	72	14.4	60	8.6	78	8.8	80
No Information Provided			Nonparticipants	9516	3947	6456	68	1042	11	3060	32	4.3	48	3.8	43	3.5	59	5.7	52	6.3	58	10.7	45	6.6	60	6.8	62
At-Risk			Yes	4911	3726	2491	51	143	3	2420	49	3.5	39	3.2	35	3.0	50	4.9	45	5.5	50	9.0	37	5.6	51	5.9	54
No Information Provided			No	5426	4220	4720	87	1237	23	706	13	5.4	59	4.6	52	4.2	70	6.7	61	7.4	67	12.8	53	7.8	71	8.0	73
Career/Technical Education			Participants	7343	3957	5003	68	853	12	2340	32	4.3	48	3.8	42	3.6	60	5.8	52	6.4	58	10.8	45	6.6	60	6.9	63
No Information Provided			Nonparticipants	2992	4054	2207	74	527	18	785	26	4.8	53	4.3	47	3.8	63	6.1	56	6.7	61	11.6	48	7.0	64	7.1	65
No Information Provided			No	2	---	---	---	---	---	---	---	---	---	---	---	---	---	---	---	---	---	---	---	---	---	---	---



STATE OF TEXAS ASSESSMENTS OF ACADEMIC READINESS
Constructed Responses Summary Report
ENGLISH III
First-Time Tested Students

STATEWIDE

Report Date: SUMMER 2016
 Date of Testing: SPRING 2016

--- = No Data Reported For Fewer Than Five Students

Short Answer Rating Summary

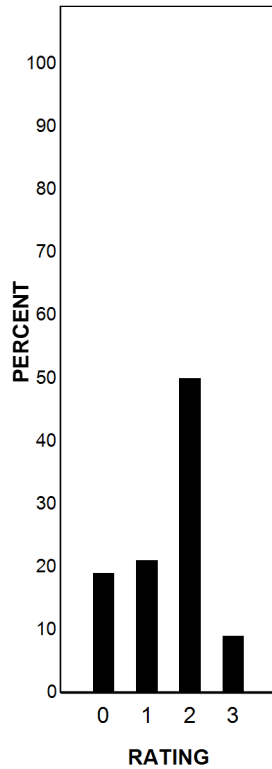
Written Composition Rating Summary

Single Selection

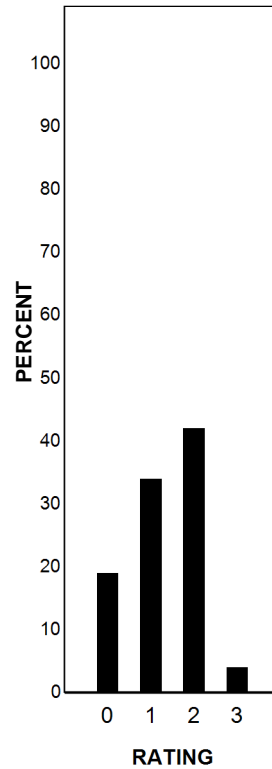
Paired Selections

Analytical Composition

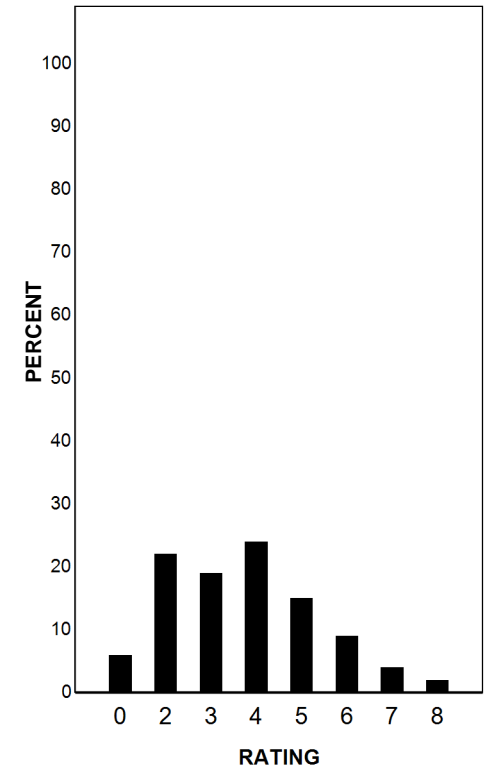
Rating	#	%
0	1991	19
1	2220	21
2	5169	50
3	957	9
Total	10337	100



Rating	#	%
0	2005	19
1	3551	34
2	4328	42
3	453	4
Total	10337	100



Rating	#	%
0	591	6
2	2265	22
3	1935	19
4	2468	24
5	1564	15
6	932	9
7	405	4
8	177	2
Total	10337	100



Each Composition has been scored independently by two readers. The written composition rating of 0-8 represents the summation of these scores.



STATE OF TEXAS ASSESSMENTS OF ACADEMIC READINESS
Combined Summary Report
ENGLISH III
All Students

STATEWIDE

Report Date: SUMMER 2016
 Date of Testing: SPRING 2016

Legend --- = No Data Reported For Fewer Than Five Students	STAAR			Total		
	Number of Students Tested	Level II: Satisfactory		Number of Students Tested	Level II: Satisfactory	
		#	%		#	%
All Students	10337	7211	70	10337	7211	70
Male	5343	3315	62	5343	3315	62
Female	4993	3895	78	4993	3895	78
No Information Provided	1	---	---	1	---	---
Hispanic/Latino	7188	4990	69	7188	4990	69
American Indian or Alaska Native	25	15	60	25	15	60
Asian	92	71	77	92	71	77
Black or African American	789	462	59	789	462	59
Native Hawaiian or Other Pacific Islander	10	7	70	10	7	70
White	2135	1594	75	2135	1594	75
Two or More Races	92	68	74	92	68	74
No Information Provided	6	4	67	6	4	67
Economically Disadvantaged	6796	4529	67	6796	4529	67
Yes	3540	2682	76	3540	2682	76
No	1	---	---	1	---	---
No Information Provided	1	---	---	1	---	---
Title I, Part A	7534	5302	70	7534	5302	70
Participants	2802	1909	68	2802	1909	68
Nonparticipants	1	---	---	1	---	---
No Information Provided	1	---	---	1	---	---
Migrant	173	97	56	173	97	56
Yes	10158	7111	70	10158	7111	70
No	6	3	50	6	3	50
No Information Provided	6	3	50	6	3	50
Limited English Proficient	803	256	32	803	256	32
Current LEP	88	58	66	88	58	66
Non-LEP (Monitored 1st Year)	129	90	70	129	90	70
Non-LEP (Monitored 2nd Year)	9316	6807	73	9316	6807	73
Other Non-LEP	1	---	---	1	---	---
No Information Provided	1	---	---	1	---	---
Bilingual	2	---	---	2	---	---
Participants	10331	7208	70	10331	7208	70
Nonparticipants	4	---	---	4	---	---
No Information Provided	4	---	---	4	---	---
ESL	783	253	32	783	253	32
Participants	9550	6957	73	9550	6957	73
Nonparticipants	4	---	---	4	---	---
No Information Provided	4	---	---	4	---	---
Special Education	608	114	19	608	114	19
Yes	9728	7097	73	9728	7097	73
No	1	---	---	1	---	---
No Information Provided	1	---	---	1	---	---
Gifted/Talented	820	755	92	820	755	92
Participants	9516	6456	68	9516	6456	68
Nonparticipants	1	---	---	1	---	---
No Information Provided	1	---	---	1	---	---
At-Risk	4911	2491	51	4911	2491	51
Yes	5426	4720	87	5426	4720	87
No	0	---	---	0	---	---
No Information Provided	0	---	---	0	---	---
Career/Technical Education	7343	5003	68	7343	5003	68
Participants	2992	2207	74	2992	2207	74
Nonparticipants	2	---	---	2	---	---
No Information Provided	2	---	---	2	---	---



STATE OF TEXAS ASSESSMENTS OF ACADEMIC READINESS
Combined Summary Report
ENGLISH III
First-Time Tested Students

STATEWIDE

Report Date: SUMMER 2016
 Date of Testing: SPRING 2016

Legend --- = No Data Reported For Fewer Than Five Students	STAAR			Total		
	Number of Students Tested	Level II: Satisfactory		Number of Students Tested	Level II: Satisfactory	
		#	%		#	%
All Students	10337	7211	70	10337	7211	70
Male	5343	3315	62	5343	3315	62
Female	4993	3895	78	4993	3895	78
No Information Provided	1	---	---	1	---	---
Hispanic/Latino	7188	4990	69	7188	4990	69
American Indian or Alaska Native	25	15	60	25	15	60
Asian	92	71	77	92	71	77
Black or African American	789	462	59	789	462	59
Native Hawaiian or Other Pacific Islander	10	7	70	10	7	70
White	2135	1594	75	2135	1594	75
Two or More Races	92	68	74	92	68	74
No Information Provided	6	4	67	6	4	67
Economically Disadvantaged	6796	4529	67	6796	4529	67
Yes	3540	2682	76	3540	2682	76
No	1	---	---	1	---	---
No Information Provided	1	---	---	1	---	---
Title I, Part A	7534	5302	70	7534	5302	70
Participants	2802	1909	68	2802	1909	68
Nonparticipants	1	---	---	1	---	---
No Information Provided	1	---	---	1	---	---
Migrant	173	97	56	173	97	56
Yes	10158	7111	70	10158	7111	70
No	6	3	50	6	3	50
No Information Provided	6	3	50	6	3	50
Limited English Proficient	803	256	32	803	256	32
Current LEP	88	58	66	88	58	66
Non-LEP (Monitored 1st Year)	129	90	70	129	90	70
Non-LEP (Monitored 2nd Year)	9316	6807	73	9316	6807	73
Other Non-LEP	1	---	---	1	---	---
No Information Provided	1	---	---	1	---	---
Bilingual	2	---	---	2	---	---
Participants	10331	7208	70	10331	7208	70
Nonparticipants	4	---	---	4	---	---
No Information Provided	4	---	---	4	---	---
ESL	783	253	32	783	253	32
Participants	9550	6957	73	9550	6957	73
Nonparticipants	4	---	---	4	---	---
No Information Provided	4	---	---	4	---	---
Special Education	608	114	19	608	114	19
Yes	9728	7097	73	9728	7097	73
No	1	---	---	1	---	---
No Information Provided	1	---	---	1	---	---
Gifted/Talented	820	755	92	820	755	92
Participants	9516	6456	68	9516	6456	68
Nonparticipants	1	---	---	1	---	---
No Information Provided	1	---	---	1	---	---
At-Risk	4911	2491	51	4911	2491	51
Yes	5426	4720	87	5426	4720	87
No	0	---	---	0	---	---
No Information Provided	0	---	---	0	---	---
Career/Technical Education	7343	5003	68	7343	5003	68
Participants	2992	2207	74	2992	2207	74
Nonparticipants	2	---	---	2	---	---
No Information Provided	2	---	---	2	---	---