





# STATE OF TEXAS ASSESSMENTS OF ACADEMIC READINESS A

## Constructed Responses Summary Report

### ENGLISH I

#### All Students

STATEWIDE

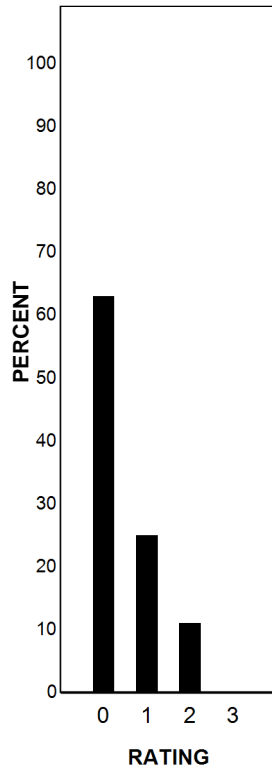
Report Date: SPRING 2016  
Date of Testing: SPRING 2016

--- = No Data Reported For Fewer Than Five Students

### Short Answer Rating Summary\*

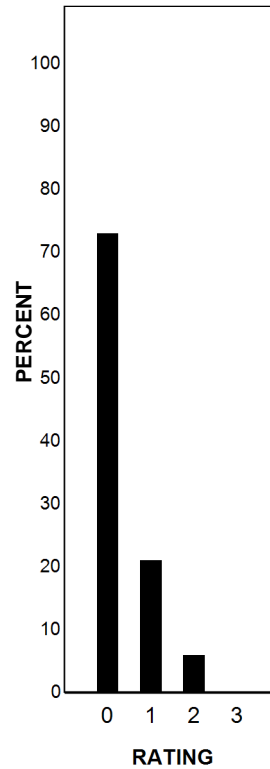
#### Single Selection

Rating	#	%
0	17529	63
1	6942	25
2	3087	11
3	54	0
Total	27612	100



#### Paired Selections

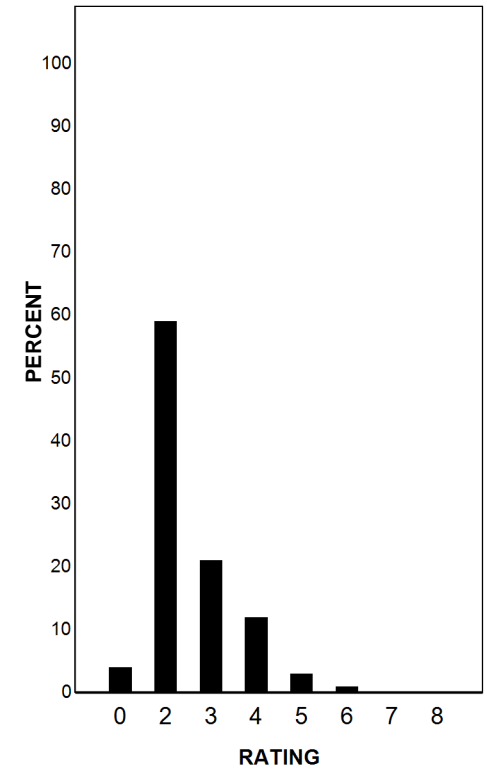
Rating	#	%
0	20118	73
1	5873	21
2	1577	6
3	44	0
Total	27612	100



### Written Composition Rating Summary\*

#### Expository Composition

Rating	#	%
0	1203	4
2	16178	59
3	5687	21
4	3437	12
5	882	3
6	187	1
7	35	0
8	3	0
Total	27612	100



Each Composition has been scored independently by two readers. The written composition rating of 0-8 represents the summation of these scores.

\* Students who took the STAAR A test on paper are not included in this report.





**STATE OF TEXAS ASSESSMENTS OF ACADEMIC READINESS A**  
**Constructed Responses Summary Report**  
**ENGLISH I**  
**First-Time Tested Students**

STATEWIDE

Report Date: SPRING 2016  
 Date of Testing: SPRING 2016

--- = No Data Reported For Fewer Than Five Students

**Short Answer Rating Summary\***

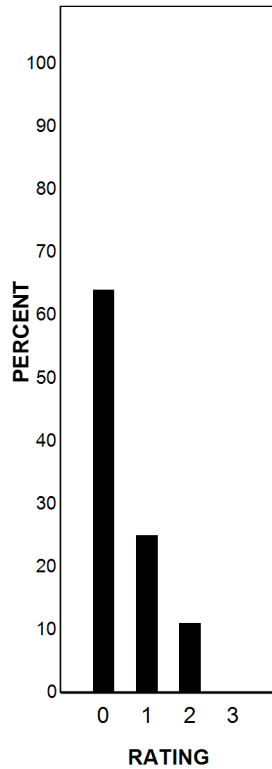
**Written Composition Rating Summary\***

**Single Selection**

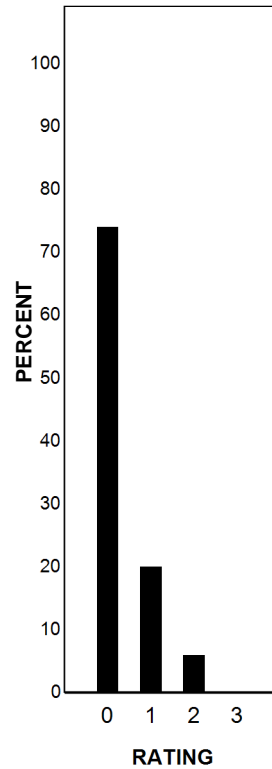
**Paired Selections**

**Expository Composition**

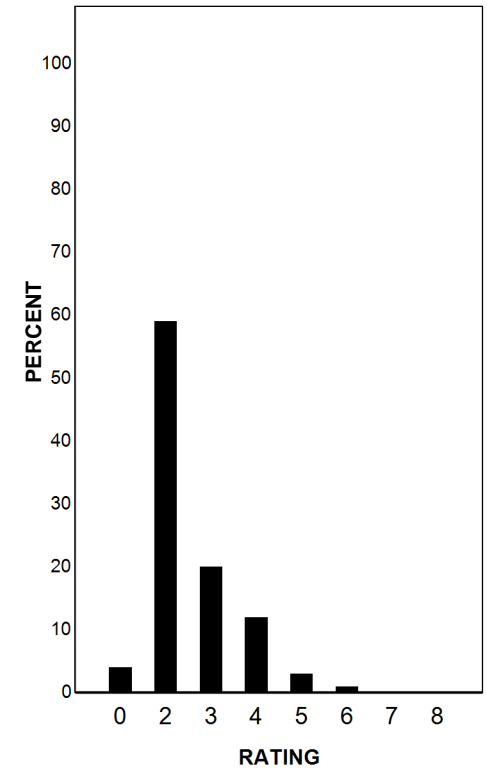
Rating	#	%
0	11787	64
1	4513	25
2	1983	11
3	41	0
Total	18324	100



Rating	#	%
0	13513	74
1	3728	20
2	1046	6
3	37	0
Total	18324	100



Rating	#	%
0	800	4
2	10852	59
3	3663	20
4	2209	12
5	627	3
6	139	1
7	31	0
8	3	0
Total	18324	100



Each Composition has been scored independently by two readers. The written composition rating of 0-8 represents the summation of these scores.

\* Students who took the STAAR A test on paper are not included in this report.





**STATE OF TEXAS ASSESSMENTS OF ACADEMIC READINESS A**  
**Constructed Responses Summary Report**  
**ENGLISH I**  
**Retested Students**

STATEWIDE

Report Date: SPRING 2016  
 Date of Testing: SPRING 2016

--- = No Data Reported For Fewer Than Five Students

**Short Answer Rating Summary\***

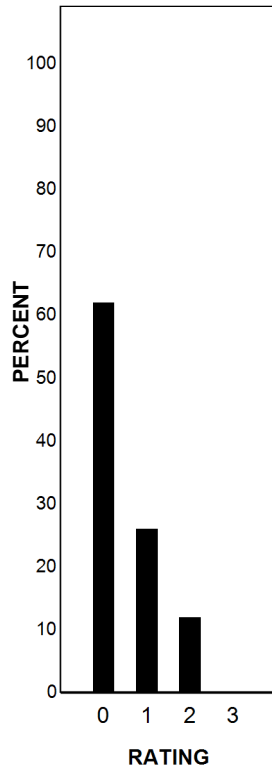
**Written Composition Rating Summary\***

**Single Selection**

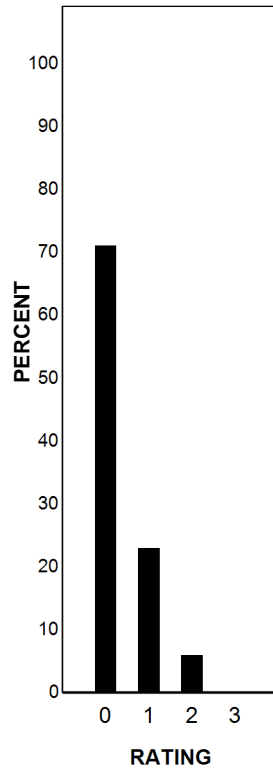
**Paired Selections**

**Expository Composition**

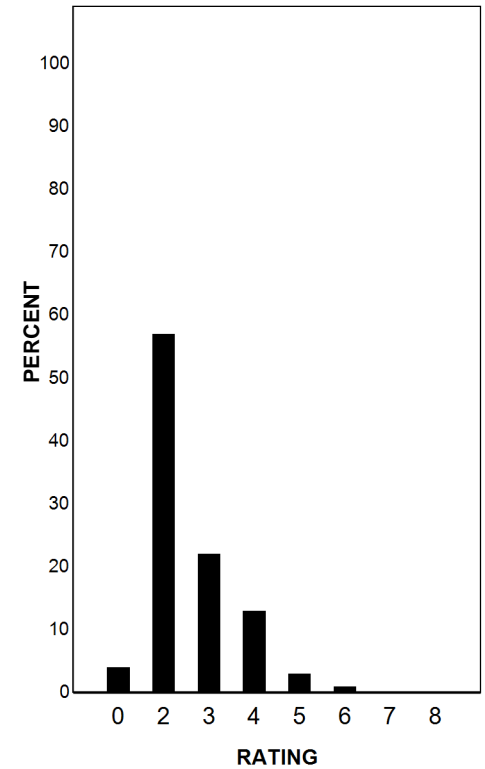
Rating	#	%
0	5742	62
1	2429	26
2	1104	12
3	13	0
Total	9288	100



Rating	#	%
0	6605	71
1	2145	23
2	531	6
3	7	0
Total	9288	100



Rating	#	%
0	403	4
2	5326	57
3	2024	22
4	1228	13
5	255	3
6	48	1
7	4	0
8	0	0
Total	9288	100



Each Composition has been scored independently by two readers. The written composition rating of 0-8 represents the summation of these scores.

\* Students who took the STAAR A test on paper are not included in this report.