





























# Grow Your Own: Education and Training Programs



Education and Training curriculum available fall 2022



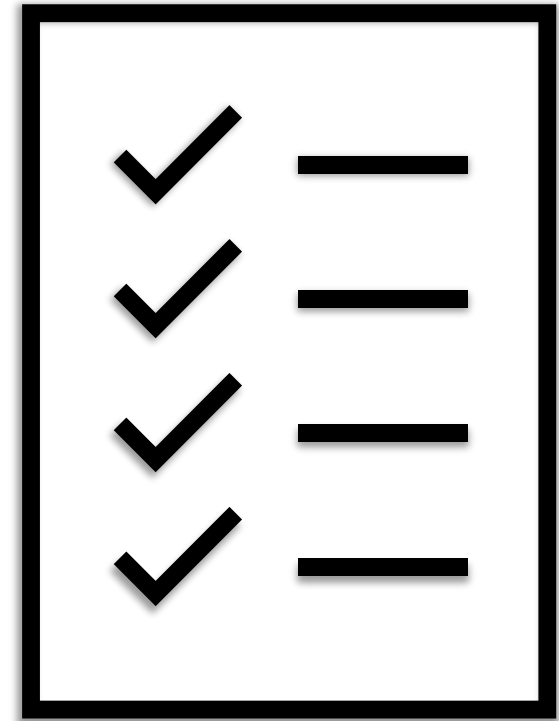
**Industry-Based Certification** available for students who complete 2 or more E&T courses (must include Instructional Practices or Practicum)



# Grow Your Own: Requirements (pg. 56)

General Requirements (see pg. 58 for complete list)

- Ensure candidates meet these [requirements](#)
- Sign MOU between LEA and candidates
- Submit quarterly reports on performance measures (e.g., names of participating candidates, number of students enrolled)
- Submit candidate info by March 1, 2022

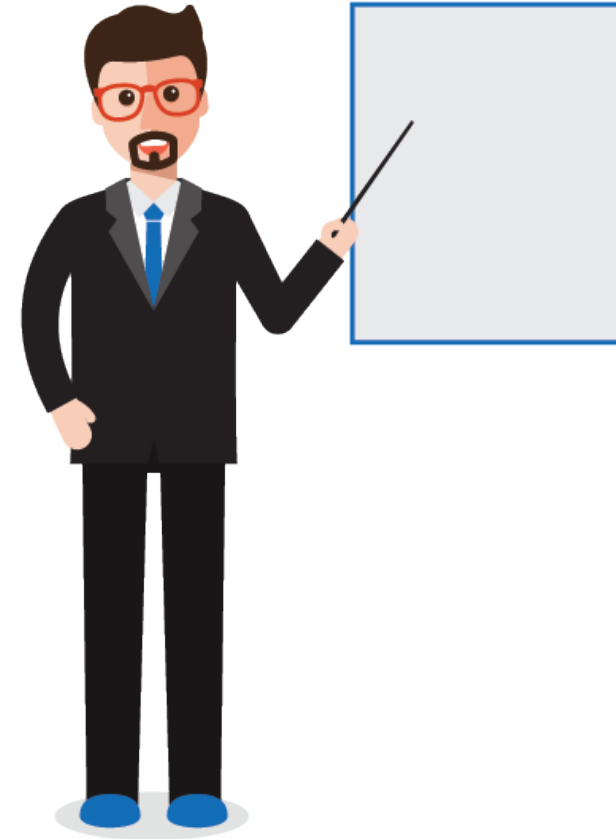




# Grow Your Own: Requirements (pg. 57)

## 4a: Paraprofessional Certification

- Bachelor's degree and certification **must be completed within 2 years** (teacher of record in the 2024–2025 school year)
- Certification only candidates **enroll in same Ed. Prep. Program**
- MOU between LEA and EPP partner
- **Paid release time and schedule flexibility** for class attendance and completion of course requirements
- 6 candidates max per LEA



# Grow Your Own: Requirements (pg. 57)

## 4b and 4c: Education & Training

- Offer Instructional Practices and/or Practicum in 2022–23 and both in 2023–2024 at **ALL high schools**
  - Dual-credit stipend recipients need to be teacher of record
- **Establish** and/or grow **CTSO** (TAFE or FCCLA)
- **Attend GYO Institute** June 2022
- **Pilot** and give feedback on **E&T curriculum**
- Submit **marketing and student recruitment plan** to TEA annually
- 2 stipend candidates max per high school



# Agenda

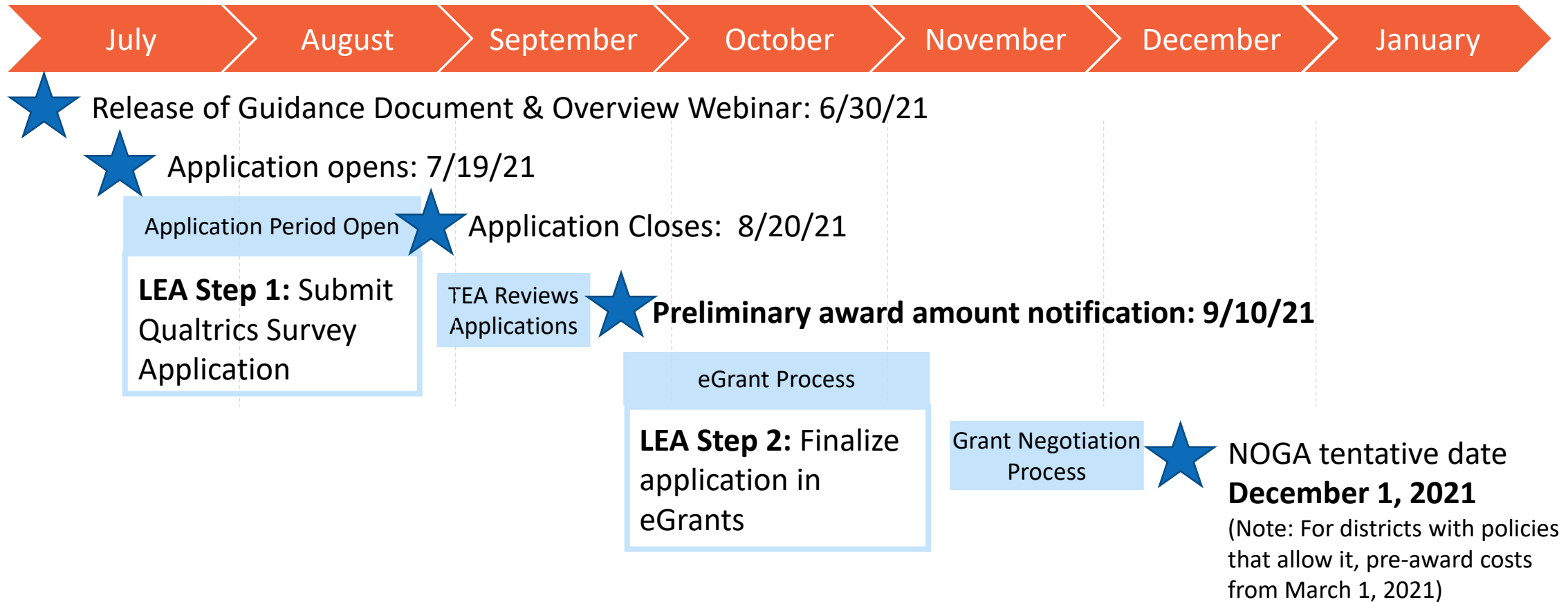
*Recap: What is TCLAS?*

Decision Point Deep Dive

Q&A and Next Steps

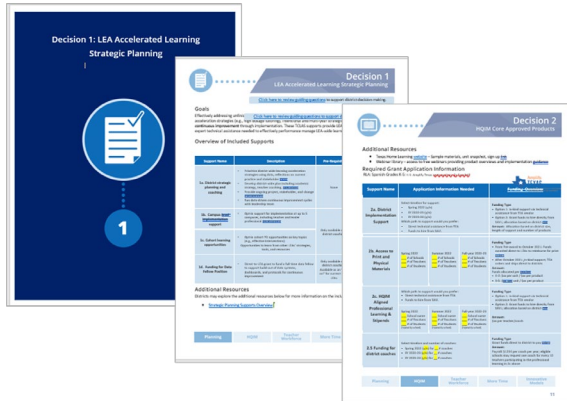
Questions?

# TCLAS Application Timeline



# TCLAS Application Components

## Guidance Document



Walks LEAs through supports available through TCLAS and guiding questions LEAs should consider before making TCLAS decisions

## Budget Calculator

TCLAS Grant Calculator - LEA Inputs

Use the guidance document to understand what is included in each decision. Fill in the yellow cells below based on your district's interest in the specific TCLAS support. Based on your inputs, the calculator will determine your estimated grant award based on overall TEA available funding and capacity.

View the Guidance Doc | Print this Page | Refresh | LEAs Fill Out Cells

General Information	Amount
EA Inputs	
Input EA student enrollment	\$50,000
Input EA's opportunity	\$500,000
EA Assumptions	
EA Assumptions	Amount
Cost per FTE per year	\$125,000

Decision Point 1: LEA Accelerated Learning Strategic Planning	2024-25	2025-26	2026-27	Notes
1a-1 Strategic Planning Support	Yes	Yes	Yes	LEAs may vary answer by year
1a-2 Does LEA want Decision 1 to support?	Yes	Yes	Yes	LEAs may vary answer by year
1a-3 Estimated funding	\$200,000	\$200,000	\$200,000	In-kind Supports
Decision Point 2: High Quality Instructional Materials Core Approved Products	2024-25	2025-26	2026-27	Notes
2a-1 Data Strategy/FTE Position	Yes	Yes	Yes	LEAs must participate in 1a to get access to 2a
2a-2 Does LEA want Decision 2 to support?	Yes	Yes	Yes	LEAs must participate in 1a to get access to 2a
2a-3 Estimated funding	\$125,000	\$125,000	\$125,000	Grant funds
<b>Total Award Value</b>	<b>\$325,000</b>	<b>\$325,000</b>	<b>\$325,000</b>	
1 Total In-kind Supports	\$200,000	\$200,000	\$200,000	
2 Total Grant Funds	\$125,000	\$125,000	\$125,000	

Decision Point 2: High Quality Instructional Materials Core Approved Products	2024-25	2025-26	2026-27	Notes
2a-1 Data Strategy/FTE Position	Select Type	Select Type	Select Type	LEAs preference for TEA awards based on availability
2a-2 Does LEA want Decision 2 to support?	Select Type	Select Type	Select Type	LEAs preference for TEA awards based on availability

Calculates district TCLAS award – including both in-kind and granted funds – based on the decisions made in TCLAS

## Application

Coming Soon

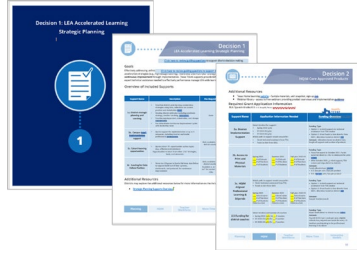
Qualtrics application link posted week of 7/19

This is how districts will submit their TCLAS choices to TEA



# Upcoming TCLAS Support Opportunities

## TCLAS Overview Webinar



Overview of **guidance document** and process for submitting a TCLAS application

June 30

Recording on [TCLAS webpage](#)

## Decision Point-Specific Webinars



In depth review of **supports available** within TCLAS; LEAs should join for all interested supports

**Week of July 12<sup>th</sup>**, Various Time

Registration available now on [TCLAS webpage!](#)

## TCLAS Office Hours



**Question and answer opportunity** with TEA staff about TCLAS and completing the application

Begin Week of July 26<sup>th</sup>

Registration available now on [TCLAS webpage!](#)

Visit the [TCLAS webpage](#) to register and access recordings

# Decision Point-Specific Webinars

Webinar Topic	Date	Time	Registration Link
Decision 1: LEA Accelerated Learning Strategic Planning	7/12/2021	12-12:45 p.m.	<a href="#">Register</a>
Decision 2: HQIM Core Approved Products	7/13/2021	2-3:00 p.m.	<a href="#">Register</a>
Decision 3: HQIM Supplemental Approved Products	7/14/2021	10-11:00 a.m.	<a href="#">Register</a>
Decision 4: Teacher Recruitment Support	7/13/2021	9-9:45 a.m.	<a href="#">Register</a>
Decision 5: Teacher Residency Program Support	7/13/2021	10-10:45 a.m.	<a href="#">Register</a>
Decision 6: Tutoring Supports	7/14/2021	2-2:45 p.m.	<a href="#">Register</a>
Decision 7: School Day Calendar Redesign	7/15/2021	11-11:45 a.m.	<a href="#">Register</a>
Decision 8: Strong Summer Program	7/14/2021	11-11:30 a.m.	<a href="#">Register</a>
Decision 9: P-TECH	7/14/2021	9-9:45 a.m.	<a href="#">Register</a>
Decision 10: New School Models	7/15/2021	8-8:45 a.m.	<a href="#">Register</a>



# Interested in applying for TCLAS?

Let us know by  
completing this  
1-minute  
survey!



[bit.ly/TCLAS-Interest-Form](https://bit.ly/TCLAS-Interest-Form)

Send any general TCLAS questions to: [TCLAS@tea.Texas.gov](mailto:TCLAS@tea.Texas.gov)

Send any Decision 4 questions to: [gyogrant@tea.texas.gov](mailto:gyogrant@tea.texas.gov)

**Thank you!**